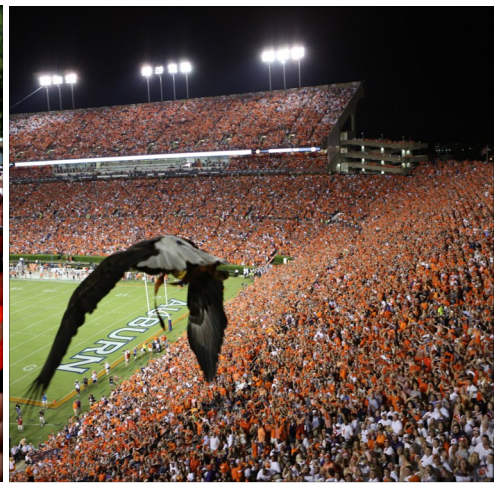


# CITY OF AUBURN COMMUNITY PROFILE 2022





# CONTENTS



WELCOME	1
NATIONAL RECOGNITION	2
LOCATION	3
DEMOGRAPHICS & HOUSING	4
MUNICIPAL & UTILITIES	5
PUBLIC EDUCATION	6-7
COLLEGES & UNIVERSITIES	8-10
HEALTHCARE	11
TRANSPORTATION	12-13
PARKS & RECREATION	14-18
CULTURAL ARTS	19
EVENTS	20
COMMERCIAL DEVELOPMENT	21
INDUSTRIAL DEVELOPMENT	22-24
WORKFORCE	25
TAXES & INCENTIVES	26



# WELCOME

**Home to Auburn University, the city of Auburn offers many of the amenities of a larger city while maintaining a small town feel.**

The city of Auburn was founded in 1836 and is known for being one of the more progressive cities in the south with a nationally ranked public school system and a diverse population. Auburn University creates a significant international presence with more than 2,200 international students and approx. 500 international employees. Many other foreign nationals live and work in the community, and it is estimated that two of three residents are from other parts of the country creating a cosmopolitan feel.



Jordan-Hare Stadium, home to the Auburn University's football team, is the nation's 10th largest on-campus football stadium with a seating capacity of 87,451.

Auburn University's presence makes the town quite different from most small cities. A sense of community pride is created from The University as citizens and local alumni proudly identify themselves as being from the city of Auburn, home of Auburn University (AU). As a member of one of the nation's top athletic conferences (SEC), The University hosts major sporting events year-round. These events continue to generate a tremendous amount of excitement and entertainment for area residents. Auburn University offers many other activities of interest as well including art shows, theatre, speakers, and concerts.

**Downtown is the heart of Auburn, located adjacent to the University's main campus.**



Downtown Auburn is lively with thriving retail that includes unique shops, fine and casual dining, quaint coffee shops, bookstores, banks, and nightlife. Toomer's Corner, an Auburn tradition since the late 1800s, is the focal point of downtown. Toomer's Corner is known as the gateway from the Auburn community to Auburn University. The Tiger Trail of downtown honors the greatest athletes, coaches and administrators from Auburn University. Each inductee is presented with a granite plaque placed in the sidewalk of downtown.

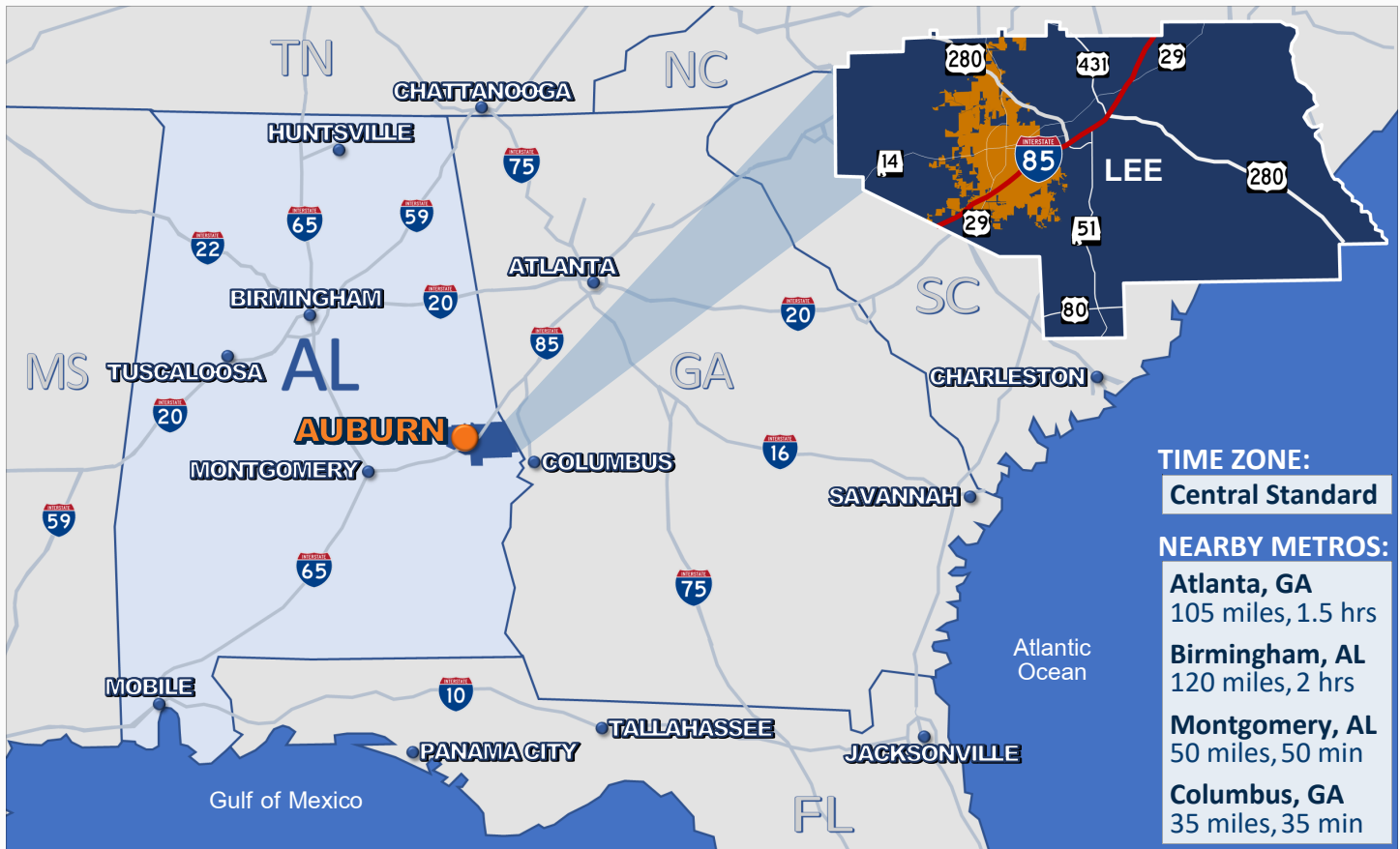
# NATIONAL RECOGNITION

	<b>2022</b> “The South’s 3 <sup>rd</sup> Best College Town”
	<b>2021</b> “6 <sup>th</sup> Best Metro for Attracting Business in the U.S.”
	<b>2021</b> “17 <sup>th</sup> Best Performing Small City for Economic Growth in the U.S.”
	<b>2020</b> “Top 100 Best Small to Mid-Sized Cities to Live in the U.S.”
	<b>2019</b> “5 <sup>th</sup> Best City for Economic Growth Potential in the U.S.”
	<b>2019</b> “Top 20 College Town in which to Start a Career in the U.S.”
	<b>2019</b> “13 <sup>th</sup> Best Small Place for Business and Careers in the U.S.”
	<b>2019</b> “Top 100 Places to Live in the U.S.”
	<b>2019</b> “The South’s 3 <sup>rd</sup> Best Retirement Town”
	<b>2019</b> “Top Place to Retire in the U.S.”
	<b>2018</b> “The Most Educated City in Alabama”
	<b>2018</b> “5 <sup>th</sup> Best School District in Alabama”
	<b>2018</b> “The South’s 2 <sup>nd</sup> Best College Town”
	<b>2017</b> “16 <sup>th</sup> Best City for Job Creation in the U.S.”
	<b>2016</b> “10 <sup>th</sup> Best Small City for Jobs in the U.S.”
	<b>2016</b> “Top 25 Cities People are Moving to.”
	<b>2015</b> “9 <sup>th</sup> Best Small Place for Business and Careers in the U.S.”
	<b>2015</b> “One of the 100 Most Educated Cities in the U.S.”
	<b>2015</b> “3 <sup>rd</sup> Best Town to Raise a Family in Alabama”
	<b>2014</b> “10 <sup>th</sup> Best Small Place for Business and Careers in the U.S.”
	<b>2014</b> “Top 25 City for Retirement in the U.S.”
	<b>2014</b> “Best City in Alabama”
	<b>2014</b> “4 <sup>th</sup> Smartest City in the U.S. and Smartest City in Alabama”
	<b>2013</b> “22 <sup>nd</sup> Best County for Job Growth in the U.S.”
	<b>2013</b> “18 <sup>th</sup> Best Small Place for Business and Careers in the U.S.”
	<b>2013</b> “10 <sup>th</sup> Best Small City for Jobs in the U.S.”
	<b>2013</b> “Smartest City in Alabama and 44 <sup>th</sup> Smartest City in the U.S.”



## LOCATION

**The city of Auburn is conveniently located along Interstate 85 in East Central Alabama (Lee County), at the junction of the Piedmont Plateau and Coastal Plains.**



**The Atlanta International Airport (the world's busiest airport) is only a 1.5 hour drive, and the Gulf of Mexico, one of the world's most popular vacation spots, is only a 3.5 hour drive.**

### APPROXIMATE DISTANCE & DRIVE TIME TO SELECTED CITIES:

<b>Tuscaloosa, AL</b> - 170 miles, 3 hrs	<b>Athens, GA</b> - 180 miles, 3 hrs	<b>Tallahassee, FL</b> - 190 miles, 4 hrs
<b>Panama City, FL</b> - 200 miles, 4 hrs	<b>Chattanooga, TN</b> - 200 miles, 3.5 hrs	<b>Huntsville, AL</b> - 220 miles, 3.5 hrs
<b>Mobile, AL</b> - 220 miles, 3.5 hrs	<b>Pensacola, FL</b> - 220 miles, 3.5 hrs	<b>Biloxi, MS</b> - 280 miles, 4 hrs
<b>Savannah, GA</b> - 280 miles, 4.5 hrs	<b>Jackson, MS</b> - 300 miles, 5 hrs	<b>Columbia, SC</b> - 320 miles, 4.5 hrs
<b>Gainesville, FL</b> - 320 miles, 5 hrs	<b>Knoxville, TN</b> - 320 miles, 4.5 hrs	<b>Jacksonville, FL</b> - 330 miles, 5.5 hrs
<b>Nashville, TN</b> - 330 miles, 5 hrs	<b>Charlotte, NC</b> - 350 miles, 5.5 hrs	<b>Memphis, TN</b> - 350 miles, 5.5 hrs
<b>New Orleans, LA</b> - 360 miles, 5.5 hrs	<b>Charleston, SC</b> - 380 miles, 6.5 hrs	<b>Orlando, FL</b> - 420 miles, 6.5 hrs

**Auburn enjoys a warm and sunny climate with mild winters. The average annual temperature is 64°F (18°C), and the average annual rainfall is 53 in (1,346 mm).**

**AVERAGE SEASONAL TEMPERATURE:**

	Average High	Average Low
Winter	58°F (14°C)	36°F (2°C)
Spring	74°F (23°C)	52°F (11°C)
Summer	89°F (32°C)	69°F (21°C)
Fall	78°F (26°C)	54°F (12°C)
ANNUAL	75°F (24°C)	53°F (12°C)



# DEMOGRAPHICS & HOUSING

The U.S. Census Bureau estimates Auburn as the #1 fastest growing city in Alabama. Since 1960, Auburn has averaged slightly more than 3% population growth per year.

## POPULATION:

City of Auburn U.S. Census Bureau 2020	76,143
Auburn-Opelika MSA (Lee County) U.S. Census Bureau 2020	174,241

## HISTORICAL POPULATION - CITY OF AUBURN:

1960	16,221
1970	22,767
1980	28,471
1990	33,830
2000	41,987
2010	53,802

## AGE & GENDER - CITY OF AUBURN:

Male	49.2%
Female	50.8%
Median Age	25.2%
Under 18 Yrs	29.0%
20-64 Years	63.1%
65 Years & +	7.9%

## INCOME - CITY OF AUBURN:

Mean Family Income	\$120,712
--------------------	-----------

## RACE - CITY OF AUBURN:

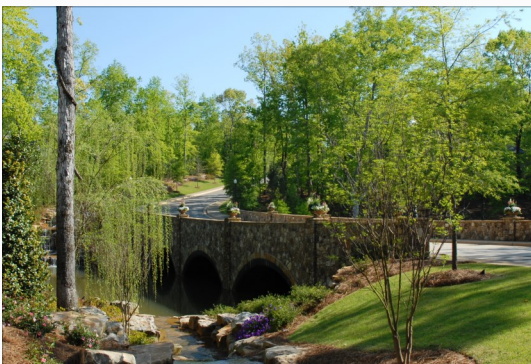
White	71.2%
Black or African American	18.4%
American Indian	.1%
Asian	8.7%
Native Hawaiian & Other Pacific Islander	0%
Two or More Races	1.3%
Hispanic	3.3%


## EDUCATIONAL ATTAINMENT - CITY OF AUBURN (POPULATION 25 YEARS & OLDER):

Less than 9th Grade	1%
9th to 12th Grade, No Diploma	1.7%
High School Graduate or GED	10.4%
Some College, No Degree	11.9%
Associate's Degree	8.3%
Bachelor's Degree	34.2%
Graduate or Professional Degree	32.5%
High School Graduate or Higher	97.3%
Bachelor's Degree or Higher	66.7%

Auburn has a wide range of housing options due to a diverse population that includes families, students, professionals and retirees.

## HOUSING - CITY OF AUBURN:





<b>Home Median Sale Price</b> Source: Lee County Association of Realtors - 2021	\$328,191
<b>Home Mean Sale Price</b> Source: Lee County Association of Realtors - 2021	\$369,029
<b>Home Median Monthly Rent</b> Source: U.S. Census Bureau	\$827
<b>Home Building Permits Issued Per Year Since 2007</b> Source: City of Auburn	500-600



# MUNICIPAL & UTILITIES

The City of Auburn was incorporated on February 2, 1839. Since 1986, the City of Auburn has conducted an annual citizen survey. The 2022 Citizen Survey revealed very high levels of satisfaction from citizens in City services, the overall value received for their tax dollar, and quality of life, exceeding the national average of cities surveyed in 71 areas.

**COUNCIL-MANAGER:** The City's form of government, led by a City Council, Mayor, and City Manager.

**CITY COUNCIL:** Includes eight members elected from eight wards and the mayor elected in the city at-large. Each member of the city council serves four-year terms. The city council acts as a legislative body of the city, passing laws and regulations, and appointing citizens to various boards and commissions.

**MAYOR:** Conducts city council meetings and is a voting member of the city council. Auburn's mayor serves as the primary contact for the governor of the State of Alabama.

**CITY MANAGER:** Appointed by the city council, acts as the city's chief administrative officer, responsible for the overall operations of day-to-day public services and city government.



## CITY OF AUBURN ORGANIZATION:

Office of the City Manager	Auburn Public Library
Community Services	Economic Development
Engineering Services	Environmental Services
Finance	Human Resources
Information Technology	Inspection Services
Municipal Court	Parks & Recreation
Planning	Public Safety
Public Works	Water Resource Management



**FIRE:** 105 firefighters serve the city at five stations. The fire division is responsible for fire suppression, rescue, and building inspections within the Auburn city limits as well as the Auburn University campus.



**POLICE:** 155 police officers serve the city responsible for preserving peace and order within the city limits of Auburn as well as the Auburn University campus. The City's police division is centrally located adjacent to downtown Auburn.

**ALABAMA POWER COMPANY:** Serves electricity to homes and businesses in Auburn. [www.alabamapower.com](http://www.alabamapower.com)

**SPIRE:** Provides natural gas to homes and businesses in Auburn. [www.spireenergy.com](http://www.spireenergy.com)

**WATER RESOURCE MANAGEMENT OF THE CITY OF AUBURN:** Provides quality water and sewer services to homes and businesses in the city limits of Auburn. [www.auburnalabama.org/wrm.org](http://www.auburnalabama.org/wrm.org)

**ENVIRONMENTAL SERVICES OF THE CITY OF AUBURN:** Serves Auburn citizens and businesses in solid waste pickup, right-of-way maintenance, recycling, and animal control. [www.auburnalabama.org/environmental-services.org](http://www.auburnalabama.org/environmental-services.org)

**AT&T:** Provides phone and internet to homes and businesses. [www.att.com](http://www.att.com)

**SPECTRUM:** Provides cable, phone, and internet to homes and businesses. [www.spectrum.com](http://www.spectrum.com)

**WOW:** Provides cable, phone, and internet to homes and businesses. [www.wowway.com](http://www.wowway.com)



# PUBLIC EDUCATION



**Auburn City Schools (ACS), the fastest growing school district in Alabama over the last five years, is recognized among the nation's top public school systems each year, due to a progressive use of technology and continued support from the City and the community.**



**SACSCASI**

**Accredited by:** Alabama State Department of Education, The Southern Association of Colleges & Schools (SACS), and The Council on Accreditation and School Improvement (CASI), and AdvancED.

**AdvancED**

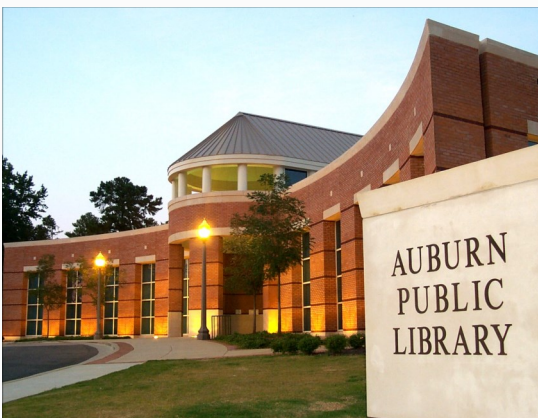
<b>Student Enrollment (2021-2022)</b>	9,221	<b>Annual Spending Per Student</b>	\$8,983
<b>Student-Teacher Ratio</b>	15.44:1	<b>Student-Computer Ratio</b>	1.4:1
<b>Teachers with Advanced Degrees</b>	70%	<b>Teachers with Doctorates</b>	27
<b>Average Teacher Experience</b>	12.34 Years	<b>Average Teacher's Salary</b>	\$54,350
<b>High School Graduates (2019)</b>	625	<b>Scholarships Awarded (2019)</b>	\$23 million
<b>Average ACT Score</b>	21.4	<b>Languages Spoken by Students</b>	42



**INTERNATIONAL BACCALAUREATE (IB):** Offers high quality programs of international education to 3,665 schools in 146 countries. Auburn High School has been an IB World School since 1997 and is one of only 12 high schools in Alabama to offer an IB diploma. [www.ibo.org](http://www.ibo.org)

**ADVANCED PLACEMENT (AP):** Offers 32 college level courses of which AHS offers 19 with exams taken during 11th and 12th grades. AP is an opportunity for high school students to earn placement in advanced college courses or earn college credit, while experiencing the type of work that is required of college students.

**FOUNDATION FOR AUBURN'S CONTINUING ENRICHMENT IN SCHOOLS (FACES):** Auburn Citizens and business partners joined together to support and enhance the educational program of all Auburn City students. The FACES program promotes innovative opportunities that enrich the educational experiences of ACS students.



**CITY OF AUBURN PUBLIC LIBRARY:** Inspires people to explore new ideas, pursue their dreams, and change their lives. The 35,000 square foot facility is home to a collection of over 55,000 books, audiobooks, DVDs and more. Computers, printers, and copiers are available to the public. The library also offers a digital collection available 24/7 that includes eBooks, downloadable audiobooks, and digital magazines. The City's public library offers a wide range of programs and classes for all ages, including several weekly story times, monthly book clubs, One Book One Auburn (in partnership with Auburn University's Common Book program) and the Summer Learning Challenge. Anyone who lives, works, or attends school in Auburn is welcome to a library card at no charge (749 E. Thach Ave.). [www.auburnalabama.org/library](http://www.auburnalabama.org/library)



# PUBLIC EDUCATION

Auburn's City Schools are housed on 13 different campuses with 1 high school, 1 junior high, 2 middle schools, and 9 elementary schools. ACS has six schools with national distinction.

## AUBURN HIGH SCHOOL (AHS)



1701 East Samford Avenue  
[www.auburnschools.org/ahs](http://www.auburnschools.org/ahs)

**U.S. News & World Report 2022**  
"15<sup>th</sup> Best High School in Alabama"

- 1 Presidential Scholar, 6 Presidential Scholar Nominees, 10 National Merit Finalists, 3 National Merit Commended Scholars, 32 AP Scholars, 14 AP Scholars with Honor, 12 AP Scholars with Distinction & 1 National AP Scholar
- 36 International Baccalaureate Diploma Candidates
- 2019 scholarships: \$23 million+ (\$135 million+ since 2012)



## AUBURN JUNIOR HIGH



405 South Dean Road  
[www.auburnschools.org/ajhs](http://www.auburnschools.org/ajhs)

## EAST SAMFORD SCHOOL



332 East Samford Avenue  
[www.auburnschools.org/ess](http://www.auburnschools.org/ess)

## J.F. DRAKE MIDDLE SCHOOL



655 Spencer Avenue  
[www.auburnschools.org/dms](http://www.auburnschools.org/dms)

## AUBURN EARLY EDUCATION



721 East University Drive  
[www.auburnschools.org/aeec](http://www.auburnschools.org/aeec)

## CARY WOODS ELEMENTARY



715 Sanders Street  
[www.auburnschools.org/cwes](http://www.auburnschools.org/cwes)

## CREEKSIDE ELEMENTARY



1800 Richland Road  
[www.auburnschools.org/domain/1891](http://www.auburnschools.org/domain/1891)

## DEAN ROAD ELEMENTARY



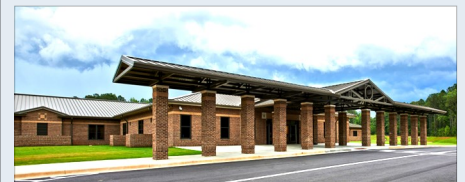
335 South Dean Road  
[www.auburnschools.org/dres](http://www.auburnschools.org/dres)

## OGLETREE ELEMENTARY



737 Ogletree Road  
[www.auburnschools.org/oes](http://www.auburnschools.org/oes)

## PICK ELEMENTARY



1320 North College Street  
[www.auburnschools.org/pes](http://www.auburnschools.org/pes)

## RICHLAND ELEMENTARY



770 South Yarbrough Farms Blvd.  
[www.auburnschools.org/res](http://www.auburnschools.org/res)

## WRIGHTS MILL ROAD ELEMENTARY



807 Wrights Mill Road  
[www.auburnschools.org/wmres](http://www.auburnschools.org/wmres)

## YARBROUGH ELEMENTARY



1555 North Donahue Drive  
[www.auburnschools.org/yes](http://www.auburnschools.org/yes)



# COLLEGES & UNIVERSITIES

**Auburn University (AU), established in 1856, is a comprehensive land, space and sea grant research institution blending arts and applied sciences. The University is the city's largest employer with approximately 7,100 employees. Located adjacent to downtown Auburn, the main campus covers more than 1,841 acres including a total of 427 buildings.**



**Forbes**

"Top 30% nationally and recognized as the best public university in Alabama."

**Kiplinger** "100 Best Values in Public Colleges"

**Money** "Top Ranked University in Alabama"

## STUDENT ENROLLMENT:

In-State-Students	16,959
Out-of-State Students	14,567
<b>TOTAL (Fall 2021)</b>	<b>31,526</b>

## HISTORICAL ENROLLMENT (1960-2020):

1960	8,829
1970	14,229
1980	18,603
1990	21,537
2000	21,860
2010	25,078
2020	30,737

## AU FACTS:

- ◆ The oldest 4-year, coeducational school in Alabama and 2nd oldest in the Southeast.
- ◆ Six NASA astronauts and three past directors of Kennedy Space Center graduated from Auburn University which placed The University in the top 5 nationally with such a distinction.
- ◆ Cancer research is a top focus of Auburn University's College of Veterinary Medicine, one of the few veterinary colleges in the country with an on-campus linear accelerator, MRI and CT-scan.
- ◆ AU's School of Engineering is the 1st in the United States to offer a bachelor's degree in wireless engineering and 1st in the Southeast to offer a software engineering program.
- ◆ The automotive engineering and manufacturing curriculum is the first of its kind in the Southeast.
- ◆ 93% of recent bachelor's degree recipients report they would attend Auburn University again.
- ◆ 7,442 degrees were awarded in the years 2019-2020.
- ◆ The average freshman high school GPA is 3.89%.





# COLLEGES & UNIVERSITIES



Auburn University offers studies in 14 schools and colleges, with more than 140 majors at the undergraduate, graduate, and professional levels.

## AU SCHOOLS & COLLEGES:

College of Agriculture  
College of Architecture, Design/Construction  
College of Business  
College of Education  
College of Engineering  
School of Forestry & Wildlife Sciences  
College of Human Sciences



Graduate School  
College of Liberal Arts  
Honors College  
School of Nursing  
School of Pharmacy  
College of Veterinary Medicine  
College of Sciences & Mathematics



**AU ENGINEERING:** Offering courses since 1872, Auburn has a long and rich tradition of excellence in engineering education. The Samuel Ginn College of Engineering is the state's largest and most prestigious engineering program consistently ranked among the highest public universities offering doctoral programs and produces more than one third of Alabama's engineering graduates. AU engineering programs include: **Aerospace, Biosystems, Chemical, Civil, Computer Science and Software, Electrical and Computer, Industrial and Systems, Materials, Mechanical, and Wireless.** The University's College of Engineering consists of 6,502 undergraduate and graduate students. Prominent alumni include four astronauts and Tim Cook, CEO of Apple, Inc. [www.eng.auburn.edu](http://www.eng.auburn.edu)



**THE PARK AT AUBURN:** Opened in 2008 at the south portion of Auburn University's main campus. The Auburn Research Park consists of more than 170 acres with six buildings which include: The Research and Innovation Center, Center for Advanced Science, Innovation and Commerce, Auburn Medical Pavilion, Auburn Research and Technology Foundation (ARTF), Edward Via College of Osteopathic Medicine (VCOM), and Big Blue Marble Academy. The park's entrepreneurial ecosystem combines a business and research environment that fosters creativity and innovation, embraces collaboration and promotes partnership. The Auburn Research Park leverages Auburn University's intellectual property assets to technology-based economic development by facilitating technology transfer, developing industry partnerships, nurturing new business ventures, and attracting knowledge-based companies to the park. [www.thepark.auburn.edu](http://www.thepark.auburn.edu)



# COLLEGES & UNIVERSITIES

**Southern Union State Community College (SUSCC)** serves more than 5,000 students at three campuses in East Alabama in Opelika, Valley, and Wadley with an educational emphasis on academic programs for transferability, technical programs for specialized career competencies and health sciences programs for specialized training in the health field. The main campus is located in Opelika, AL, only five miles from Auburn.



**ACADEMIC DIVISION:** Offers the Associate in Science (A.S.) and Associate in Applied Science (A.A.S.) degrees. The division's departments include: Business, Child Development, Fine Arts, Language Arts, Mathematics, Science and Social Science, Wellness, including Health and Physical Education, and Therapeutic Massage. The SUSCC Learning Resource Centers and Adult Education are also part of the division.

**HEALTH SCIENCES DIVISION:** Offers Emergency Medical Services, Registered Nursing, Practical Nursing, Surgical Technology, Therapeutic Massage, Radiography, Computed Tomography (CT), Magnetic Resonance Imaging (MRI), Medical Assistant Technology and Health and Physical Education Courses.

**TECHNICAL EDUCATION & WORKFORCE DEVELOPMENT DIVISION:** Consists of three programs that lead to an Associate in Applied Science degree: Engineering and Design, Industrial Electricity and Electronics Technology and Manufacturing Technology and five programs which lead to an Associate in Occupational Technologies Degree: Air Conditioning/Refrigeration, Automotive Service Technology, Cosmetology, Machine Shop Technology and Welding Technology. In addition, certificates within all of the listed technical programs for students, as well as short term certificates in Plastics Injection Molding and Robotics/Automation. Customized training for the area's business and industry is also offered through a partnership with SUSCC's Training for Existing Business and Industry unit (TEBI).

[www.suscc.edu](http://www.suscc.edu)

## DISTANCES TO NEARBY COLLEGES & UNIVERSITIES:

<b>Auburn University</b> Auburn, AL-0 miles	<b>Southern Union State Community College (SUSCC)</b> Opelika, AL-5 miles	<b>Tuskegee University</b> Tuskegee, AL-7 miles	<b>Columbus Technical College</b> Columbus, GA-32 miles
<b>Troy University at Phenix City</b> Phenix City, AL-33 miles	<b>Chattahoochee Valley Community College</b> Phenix City, AL-33 miles	<b>Columbus State University</b> Columbus, GA-34 miles	<b>Central Alabama Community College</b> Alexander City-35 miles
<b>West Georgia Technical College</b> LaGrange, GA-38 miles	<b>LaGrange College</b> LaGrange, GA-40 miles	<b>Auburn University at Montgomery</b> Montgomery, AL-43 miles	<b>Faulkner University</b> Montgomery, AL-46 miles
<b>Trenholm State Technical College</b> Montgomery, AL-50 miles	<b>Troy University at Montgomery</b> Montgomery, AL-50 miles	<b>Huntingdon College</b> Montgomery, AL-50 miles	<b>Alabama State University</b> Montgomery, AL-50 miles



# HEALTHCARE



**East Alabama Medical Center (EAMC)** is an acute-care regional referral center serving more than 150,000 people annually in east Alabama and west Georgia with approximately 150 physicians, practicing in more than 30 different specialties. EAMC is located in nearby Opelika, AL approximately five miles from Auburn. EAMC has facilities in Auburn as well.



**FACILITIES:** EAMC is a 340-bed hospital which includes a cancer center, four assisted/independent living facilities, nursing home, fitness center, wound treatment center, and Auburn University Medical Clinic. The cancer center is currently expanding and is expected to open in summer 2019. The new center will expand to allow for a radiation/oncology program and add an additional linear accelerator. EAMC's medical oncology program will also be expanding doubling the facility size to 40,000 square feet. The new center will be offering new services and expanding ones already in place, including an onsite outpatient pharmacy for patients being treated at the center. [www.eamc.org](http://www.eamc.org)

## EAMC SERVICES:

Assisted & Independent Living	HealthPlus Fitness Center	Psychiatric Services
Auburn University Medical Clinic	Imaging Services	RehabWorks
Comprehensive Cancer Services	Neurosurgery	Renal & Dialysis Facilities
Cardiology	Oak Park Nursing Home	Skilled Nursing Facility
Cardiovascular Surgery	Orthopaedic Joint Center for Excellence	Sleep Disorders Center
Diabetes & Nutrition Center	Outpatient Services Center	Women & Children's Center
Emergency Department	Pain Clinic	Wound Treatment Center

## AUBURN UNIVERSITY MEDICAL CLINIC (AUMC):

A partner of EAMC, provides professional medical services. AUMC is a full-service primary care clinic serving Auburn University students, faculty, and other university staff. In addition, AUMC serves citizens with primary care from the surrounding areas. <https://cws.auburn.edu/aumc>



**EAST ALABAMA EMERGENCY MEDICAL SERVICES (EAEMS):** Operates the primary pre-hospital emergency medical transport service that serves citizens in the Auburn-Opelika area. EAEMS responds from 4 stations located around Lee County, maintains a fleet of 13 ambulances, staffing 7 advanced life support (ALS) ambulances 24/7, an ALS rescue truck, and a non-emergency transport vehicle. Emergency Medical Services also operates the E-911 medical dispatch center. [www.eamc.org/services/emergency-medical-services-ems](http://www.eamc.org/services/emergency-medical-services-ems)

**Healthcare options are plentiful with a number of established practices and many new doctors relocating to the Auburn area. Auburn is home to several emergency care facilities with extended days and hours of operation.**

# TRANSPORTATION

The City continues to make major roadway infrastructure improvements to meet the needs of Auburn citizens and ease traffic flow. Auburn is easily accessible by road from one major interstate and three highways.



**INTERSTATE 85 (I-85 NORTH/SOUTH):** Provides access to Auburn via Exit 50 (Auburn Technology Pkwy/Cox Road), Exit 51 (U.S. Hwy 29/S. College Street), and Exit 57 (Bent Creek Road).



**U.S. HIGHWAY 280 (280 EAST/WEST):** Provides access to Auburn via N. College Street, Shelton Mill Road, and Opelika Road.



**U.S. HIGHWAY 29 (U.S. HWY 29 NORTH/SOUTH):** Provides access to Auburn from the south via South College Street.



**ALABAMA HIGHWAY 14 (AL HWY 14 EAST/WEST):** Provides access to the city from the west via Martin Luther King Drive.



**Five airports are located within 110 miles of Auburn including the Atlanta Airport, the busiest airport in the world with more than 2,500 daily flights.**

**HARTSFIELD-JACKSON ATLANTA INTERNATIONAL AIRPORT (ATL):** Serves more than 150 U.S. destinations and more than 60 international cities in 50 countries in Atlanta, Georgia (100 miles). [www.atlanta-airport.com](http://www.atlanta-airport.com)

**BIRMINGHAM SHUTTLESWORTH INTERNATIONAL AIRPORT (BHM):** Offers more than 100 daily flights to over 25 U.S. cities in Birmingham, Alabama (110 miles), served 2.8 million passengers in 2012. [www.bhamintairport.com](http://www.bhamintairport.com)



**MONTGOMERY REGIONAL AIRPORT (MGM):** Serves nearly 400,000 travelers each year in Montgomery, Alabama (60 miles). [www.iflymontgomery.com](http://www.iflymontgomery.com)

**COLUMBUS AIRPORT (CSG):** Serves 100,000 passengers annually in Columbus, Georgia (35 miles). [www.flycolumbusga.com](http://www.flycolumbusga.com)

**AUBURN UNIVERSITY REGIONAL AIRPORT (AUO):** Serves citizens in the area as a public use facility in Auburn, AL off of Interstate 85, Exit 57, and is owned by Auburn University. [www.auoairport.com](http://www.auoairport.com)

**Three deepwater ports are located within 290 miles of Auburn, and a Class I main line railroad travels through Auburn owned and operated by CSX Transportation.**

**PORT OF MOBILE:** 12th largest seaport in the U.S., located in Mobile, Alabama (220 miles). [www.asdd.com](http://www.asdd.com)

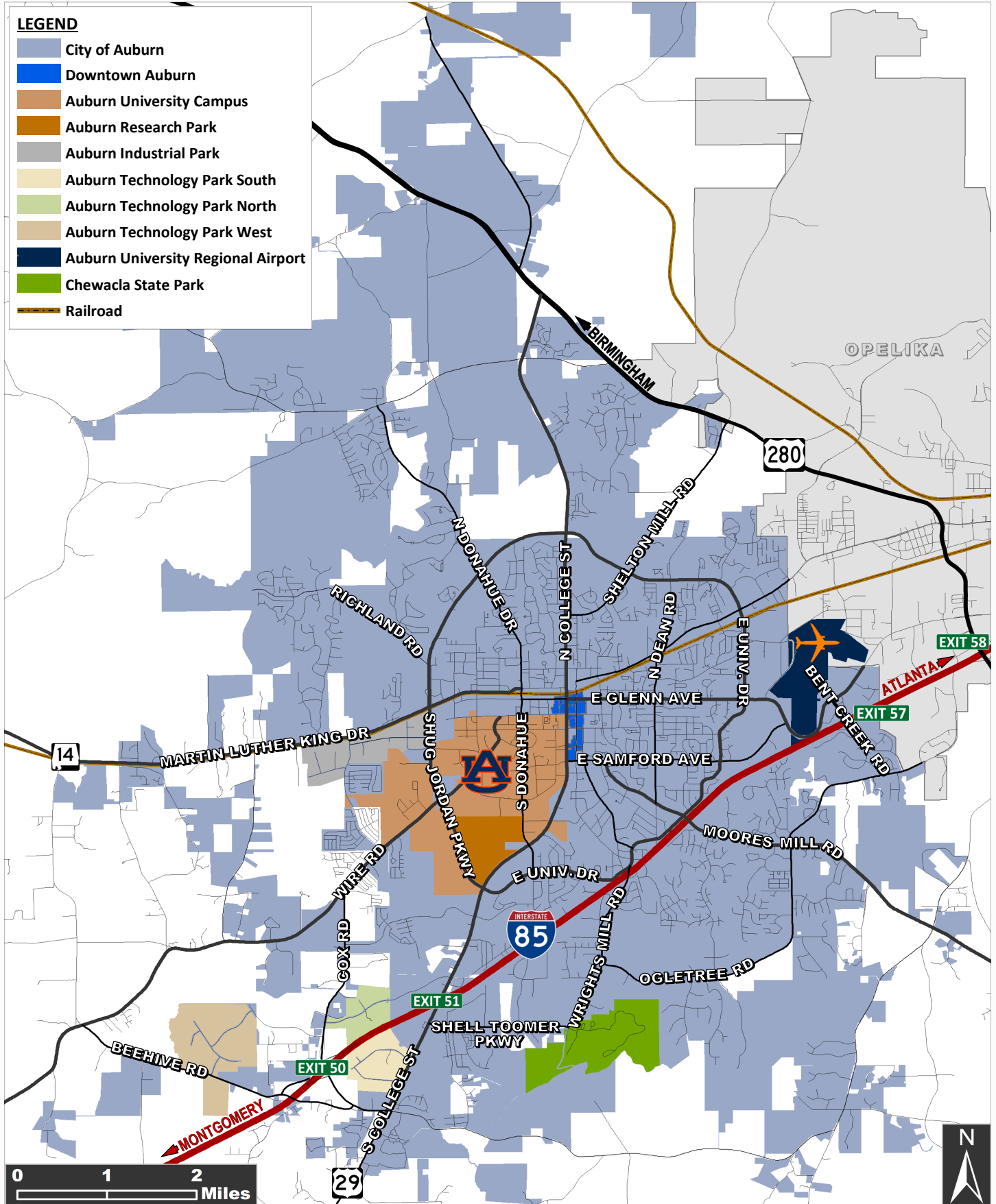
**PORT OF SAVANNAH:** Largest single-terminal container facility of its kind in North America. The port has the 4th largest container handling facilities in the U.S., located in Savannah, Georgia (275 miles). [www.gaports.com](http://www.gaports.com)

**PORT OF BRUNSWICK:** Home to the South Atlantic's fastest growing bulk export/import operation. The port is located in Brunswick, GA (280 miles). [www.gaports.com](http://www.gaports.com)



# TRANSPORTATION

AUBURN CITY MAP



# PARKS & RECREATION

The City of Auburn is committed to preserving green space as the city grows to ensure the next generation's enjoyment of City parks for years to come. Auburn is home to several top-notch recreational parks, walking trails, and bike trails.



**KIESEL PARK:** The City's largest park includes a pavilion, a pond, a garden, a pet-friendly 2¼ mile walking trail and the historic Nunn-Winston House, a perfect venue for small events. Kiesel hosts the annual CityFest which attracts more than 35,000 people each year. The 157 acre dog friendly park is known for its colorful nature trails and horticultural beauty (520 Chadwick Ln.).

**TOWN CREEK PARK:** Auburn's newest green space, includes a 9/10 mile long walking trail, swinging benches, a pavilion, picnic tables, and a historic tree trail (1150 S. Gay St.).

**HICKORY DICKORY PARK:** A nursery rhyme themed playground for children located off of Shug Jordan Parkway (1400 Hickory Ln.).

**MARTIN LUTHER KING PARK:** Includes a pavilion, a playground, a basketball goal and a fenced-in-field (190 Byrd St.).

**FELTON LITTLE PARK:** The park provides a playground area, a batting cage, a concession stand, a picnic area with three grills and three picnic tables, as well as three youth softball and baseball fields (341 E. Glenn Ave.).



**MOORES MILL PARK:** The park is temporarily closed due to road work and bridge construction. The park will be renovated and will reopen soon (900 E. University Dr.).

**SAM HARRIS PARK:** Renovated in 2017, the park includes a playground, pavilion and walking trail (850 Foster St.).

## WALKING TRAILS:

<b>Duck Samford Baseball Trail</b> 335 Airport Rd. (3 ¾ laps=1 mile)	<b>Duck Samford Track</b> 1623 E. Glenn Ave. (3 ¾ laps=1 mile)	<b>Frank Brown Rec. Center Path</b> 335 Airport Rd. (3 ¾ laps=1 mile)
<b>Kiesel Park Trail</b> 520 Chadwick Ln. (1 lap=2 ¼ miles)	<b>Sam Harris Park Trail</b> 85 Foster St. (6 laps=1 mile)	<b>Town Creek Park Trail</b> 1150 South Gay St. (1 lap=.87 mile)

[www.auburnalabama.org/parks/facilities](http://www.auburnalabama.org/parks/facilities)



**CYCLING:** Auburn is one of 150 cities to be named a Bicycle-Friendly Community by the League of American Bicyclists. The city of Auburn remains the only Bicycle-Friendly Community in the state since the year of 2000. The City is happy to offer bike sharing programs, welcome cyclist group rides, and several Unique biking trails throughout the city with more than 40 miles of bike trails and paths throughout the city.



[www.auburnalabama.org/cycle](http://www.auburnalabama.org/cycle)



# PARKS & RECREATION



**CHEWACLA STATE PARK:** The State Park has 696 scenic acres offering plenty of rest, relaxation and recreation. Chewacla's facilities include a 26-acre lake, peaceful waterfalls, a swimming area, a playground, modern campgrounds, picnic areas, grills and shelters, cabins, hiking and mountain bike trails. Chewacla has eight trails including the Charlotte and Curtis Ward bike path along Shell Toomer Parkway consisting of three miles. Visitors are allowed to fish in the lake or two creeks and may bring their own small non-motorized watercraft such as canoes or kayaks if they can be hand-launched from the bank (124 Shell Toomer Pkwy.). [www.alapark.com/chewacla](http://www.alapark.com/chewacla)

**DONALD E. DAVIS ARBORETUM:** An Auburn University facility providing visitors with a place to enjoy a natural setting and experience the native plants and habitats of Alabama. The arboretum functions as a museum and an outdoor classroom for the University, schools and community groups. The primary purposes are: conservation, education and research. The Davis Arboretum also works in protecting the campus natural resource areas. The primary mission of the arboretum is to display and preserve living plant collections and native southeastern plant communities; to inspire an understanding of the natural world and our connection to it; and promote education, research, and outreach. [www.auburn.edu/cosam/arboretum](http://www.auburn.edu/cosam/arboretum)



**KREHER PRESERVE & NATURE CENTER (KPNC):** Since its endowment to the Auburn University School of Forestry and Wildlife Sciences, KPNC has continued to evolve into a first-class discovery and nature center with exciting programs offered throughout each year including exciting nature-based programs such as: Discovery Hikes, Nature Walks, School Programs, Youth Camps, Adult Workshops & Classes, Educational Exhibits, and Wildlife Study Programs. Five miles of trails on 120 acres, an amphitheater, pavilion, and nature playground are featured at the Preserve. KPNC is located in Auburn (2222 North College St). [www.auburn.edu/preserve](http://www.auburn.edu/preserve)

**Many other recreational attractions and hot spots that Auburn citizens take advantage of are located within 30 miles of Auburn.**

**LAKE MARTIN:** A very popular attraction located 25 miles from Auburn. The 44,000-acre lake features over 750 miles of wooded shoreline with activities including boating, fishing, skiing, swimming, and golfing. The lake's main attractions are Chimney Rock, Kowaliga Bridge, Willow Point Country Club, and Stillwaters Resort. The lake hosts special events year-round including concerts, fishing tournaments, and more. [www.lakemartin.com](http://www.lakemartin.com)

**LAKE HARDING:** A 5,850-acre reservoir on the Chattahoochee River 10 miles from Auburn with portions of the lake located in Georgia and Alabama. The lake offers fishing, boating, and more. [www.lakeharding.com](http://www.lakeharding.com)

**LEE COUNTY LAKE:** A 130-acre fishing lake owned by the State of Alabama, located 9 miles from Auburn.

**TUSKEGEE NATIONAL FOREST:** Includes camping facilities, bike trails, hiking trails, horseback riding trails, a shooting range, and wildlife viewing areas. [www.fs.usda.gov/alabama](http://www.fs.usda.gov/alabama)



# PARKS & RECREATION

**The City of Auburn owns and maintains nine athletic facilities and has some of the premier facilities in the state playing host to many major sporting events.**

**AUBURN SOFTBALL COMPLEX:** Home of the Auburn High School softball program and has served as home field for the Auburn University softball team. The Softball Complex features a three story press box, concessions, covered dugouts, a picnic area, adult ball fields and seats 1,200 spectators. The Auburn Softball Complex has been named the 2013 Alabama ASA Complex of the Year and is also an Alabama ASA Hall of Fame member as well. The softball facility is located in south Auburn adjacent to Interstate 85 (I-85), Exit 51, on U.S. Highway 29 (2560 S. College St.). [www.auburnalabama.org/parks/facilities/auburn-softball-complex](http://www.auburnalabama.org/parks/facilities/auburn-softball-complex)



**DUCK SAMFORD PARK:** The park includes 10 lighted baseball fields at three different locations: Duck Samford Baseball fields 1-3 (1720 East University Drive), Bo Cavin Baseball Fields 4-7 (335 Airport Road), and Duck Samford Baseball fields 8-10 (333 Airport Road). All three locations include batting cages and concession stands. Duck Samford Park has hosted the Dixie Youth World Series as well as the Dixie Youth State Tournament. [www.auburnalabama.org/parks/facilities/duck-samford-park](http://www.auburnalabama.org/parks/facilities/duck-samford-park)

**SAMFORD POOL:** Samford Pool features three pools: the main pool, diving well (with diving boards: two high dive & two low dive), and a children's pool. In 2016, Samford Pool celebrated 40 years of swimming. Renovations were made in 2016 with updates to the concessions, the pool house and resurfacing of the pools (465 Wrights Mill Rd.). [www.auburnalabama.org/parks/facilities/samford-pool](http://www.auburnalabama.org/parks/facilities/samford-pool)



**WIRE ROAD SOCCER COMPLEX:** Includes seven lighted fields and is home to the Auburn Soccer Association leagues (2340 Wire Road). [www.auburnalabama.org/parks/facilities/auburn-soccer-complex](http://www.auburnalabama.org/parks/facilities/auburn-soccer-complex) Additional fields are located at Wrights Mill Road Elementary School (910 Wrights Mill Road and off Shug Jordan Pkwy. (950 Pride Avenue). [www.auburnalabama.org/parks/facilities/auburn-soccer-field](http://www.auburnalabama.org/parks/facilities/auburn-soccer-field)

**YARBROUGH TENNIS CENTER:** Owned and maintained jointly by the City of Auburn and Auburn University, the tennis center is home to The University's tennis teams as well as all City programs and events. The Yarbrough tennis facility features 16 clay courts (includes a stadium court), 12 outdoor hard courts, and six indoor courts. All tennis clinics, lessons and events are hosted at Yarbrough Tennis Center. The Tennis Center is located off Shug Jordan Pkwy off Richland Rd. (777 South Yarbrough Farms Blvd.). [www.auburnalabama.org/parks/facilities/yarbrough-tennis-center](http://www.auburnalabama.org/parks/facilities/yarbrough-tennis-center) Additional courts are available to at Samford Avenue (901 E. Samford Ave.) and Indian Pines (900 Indian Pines Dr.).





# PARKS & RECREATION



**Golf Digest once named the Auburn area the #1 Metro area for golf in the U.S.**

**INDIAN PINES GOLF COURSE:** 18-hole public golf course is a par 70 course measuring 6,310 yards with summer Tifdwarf bermuda grass and Poa Trivialis overseed in the winter. The course was cited by Golf Digest in their rating of the Auburn area as the "best golf city in America." The Cities of Auburn and Opelika operate Indian Pines as a municipal course. Indian Pines is the home course of the Auburn High School Tiger's golf team (900 Country Club Dr.). [www.indianpinesgc.com](http://www.indianpinesgc.com)



## **ROBERT TRENT JONES GOLF TRAIL AT GRAND NATIONAL:**

Popular vacation destination which was built on 600-acre Lake Saugahatchee in Opelika, AL, includes three 18-hole golf courses available to the public. One of the three is a Par-3 course. RTJ at Grand National has played host to PGA Tour events. Both the Links and Lake courses were in the top 10 of Golf Digest's list of "America's Top 50 Affordable Courses," and all three courses were listed among the nation's 40 Super Value courses by Golf Digest's "Places to Play." The Marriott Hotel is located near the complex as well (3000 Robert Trent Jones Trail, Opelika, AL). [www.rtgolf.com/grandnational](http://www.rtgolf.com/grandnational)

**AUBURN UNIVERSITY CLUB:** 18-hole private golf club in northwest Auburn just a few minutes from Auburn University's main campus. The AU golf club features 225 acres of beautiful rolling hills and woodlands, a clubhouse, full-service restaurant, tennis courts, two swimming pools, and a fitness center. Established in 1999, the Auburn University Club serves as the official home of the Auburn University Tigers golf teams. The Auburn University Club has hosted the NCAA regionals in 2013 for the women and the NCAA regionals for the men in 2014 (1650 Yarbrough Farms Blvd.). [www.augolfclub.com](http://www.augolfclub.com)



**MOORE'S MILL CLUB:** Private golf club in Auburn includes an 18-hole golf course on rolling terrain through dense hardwoods. Other club facilities include tennis courts, two swimming pools, a fitness center, a spacious clubhouse with a restaurant and lounge, childcare, and an outdoor pavilion that hosts special events (1957 Fairway Dr.). [www.mooremillclub.com](http://www.mooremillclub.com)

**SAUGAHATCHEE COUNTRY CLUB:** Private country club offering an 18-hole golf course which was ranked one of the top 5 in the state by Golf Digest and it was reported by the Columbus Ledger Enquirer that the course has four of the best 18 holes in the Chattahoochee Valley. The golf club has tennis courts, a swimming pool, fitness and dining too. Saugahatchee Country Club is located directly adjacent to Auburn in Opelika, Alabama only .5 miles from Interstate 85, Exit 57 (3800 Bent Creek Rd.) [www.saugahatcheecountryclub.com](http://www.saugahatcheecountryclub.com)





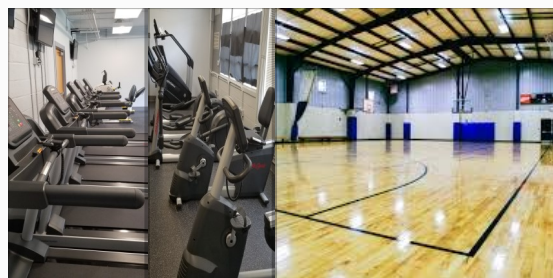
# PARKS & RECREATION

The City offers programs for all citizens including: **Adult 50+, Aquatics, Camps, Ceramics, Cultural Arts, Fitness, Special Events and Holiday Happenings, Special Interest, and Therapeutics.** These programs are held at five facilities (The City's Arts Center is featured on the next page).



**DEAN ROAD RECREATION CENTER:** The center consists of a gym and a Ceramics Studio. The gymnasium has a youth-sized basketball court and a pickle ball court. The Ceramics Studio provides innovative studio space that includes nine pottery wheels, a stainless steel extruder, a slab roller, four commercial-grade kilns, and a selection of glazes. It offers children homeschool, adult, and senior ceramic classes. Dean Road Recreation Center is also home to various Therapeutic programs offered year-round. New programs are being developed and will be advertised in the quarterly brochures and on the City's Parks and Rec. social media pages (307 S. Dean Rd.). [www.auburnalabama.org/parks/facilities/dean-road-rec-center](http://www.auburnalabama.org/parks/facilities/dean-road-rec-center)

**BOYKIN COMMUNITY CENTER:** Houses programs including free-play basketball, Aikido classes, programs for seniors, and fitness. The Boykin Community Center is home to the Auburn Day Care Center, the Auburn Senior Center sponsored by the Lee-Russell Council on Government Area on Aging, Boys & Girls Clubs of Greater Lee County-Auburn Unit, and Joyland Child Development Center. The Boykin Community Center is also available for rentals (400 Boykin St.). [www.auburnalabama.org/community-development/boykin-community-center](http://www.auburnalabama.org/community-development/boykin-community-center)



**FRANK BROWN RECREATIONAL CENTER:** The facility features a fitness center which includes a cardio room, strength room, free weight room, a group fitness room, fitness instruction, and locker rooms. The Frank Brown Recreation Center also has a newly constructed .42 mile walking path, a racquetball court, volleyball, activity rooms, a game room, and free-play basketball (indoor and outdoor). Many programs and classes are offered at the Frank Brown Rec. center for all ages (235 Opelika Rd.). [www.auburnalabama.org/parks/facilities/frank-brown-rec-center](http://www.auburnalabama.org/parks/facilities/frank-brown-rec-center)

**HUBERT & GRACE HARRIS SENIOR CENTER:** Home of the City's Parks and Recreation administrative offices and all 50+ programming including bingo, movie night, book club, speaker series and fitness classes. This Harris Center is equipped with a computer café which includes four desktop computers and one printer for public use. Top priority of computer use is given to 50+ members of the community, but can also be used by anyone in the general public. The activity room, meeting room and catering kitchen at the Harris Center are available for rentals. Please check the City's Parks & Rec. quarterly brochure for more info on programs and classes (425 Perry St.). [www.auburnalabama.org/facilities/hubert-and-grace-harris-center](http://www.auburnalabama.org/facilities/hubert-and-grace-harris-center)





# CULTURAL ARTS

## **JAN DEMPSEY COMMUNITY ARTS CENTER (JDCAC):**

The City's Arts Center allows citizens to experience visual/performing arts, entertain innovative ideas, develop new talent, and experience all cultural that Auburn has to offer. There are classes and workshops for all ages, art exhibits, community theatre, education programs and special events each year. JDCAC serves artistic needs of the city and provides residents and visitors with cultural programming, art exhibitions, theatre, concerts, dance recitals, lectures and workshops. JDCAC offers an art gallery, children's gallery, performance room, two art studios, and conference room. JDCAC is available for rental and has been the site of many birthday celebrations, showers, workshops, and art related events. JDCAC has developed a strong collaboration with the Auburn Arts Association, Auburn Area Community Theatre, Auburn University/Community Orchestra, Jule Collins Smith Museum of Fine Art and others (222 E. Drake Ave.). [www.auburnalabama.org/parks/facilities/jan-dempsey-community-arts-center](http://www.auburnalabama.org/parks/facilities/jan-dempsey-community-arts-center)



**JULE COLLINS SMITH MUSEUM OF FINE ART (JCSM):** 30,000 visit JCSM annually, with a growing collection of close to 2,500 works of art as well as 200 free public programs. Located at Auburn University's entry to the main campus, JCSM includes galleries, an auditorium, café, gift shop, an English-inspired formal area, woodland landscape, outdoor sculpture, walking paths, and botanical gardens. The museum offers a permanent collection, children's program, lectures, traveling exhibitions, concerts, and is in the top 6 percent of American museums that are accredited (901 S. College St). [www.jcsm.auburn.edu](http://www.jcsm.auburn.edu)

**JAY & SUSIE GOGUE PERFORMING ARTS CENTER:** The Arts Center at Auburn University provides a high quality performance venue for musicals, theatre, dance, speakers and other events. The multipurpose venue seats 1,200 guests. A second space for a small performance venue, connected to an outdoor amphitheater is available as well. The brand new 85,000 square foot facility opened in Fall of 2019. [www.goguecenter.auburn.edu](http://www.goguecenter.auburn.edu)



**AUBURN UNIVERSITY TELFAIR B. PEET THEATRE:** Offers classical and modern productions year-round, located on Auburn University's main campus (350 W. Samford Ave.). [www.cla.auburn.edu/theatre](http://www.cla.auburn.edu/theatre)

**JONATHAN B. LOVELACE HALL OF HONOR:** Displays and honors the history of Auburn University's collegiate athletics at the Auburn Arena (392 S. Donahue Dr.). [www.auburn.edu/main/welcome/visitorsguide/hallofhonor.php](http://www.auburn.edu/main/welcome/visitorsguide/hallofhonor.php)

**OPELIKA CENTER FOR THE PERFORMING ARTS:** Features a 1,200 seat hall which hosts theatre productions and events throughout each year in Opelika, AL (1700 Lafayette Parkway, Opelika, AL). [www.eastalabamaarts.org](http://www.eastalabamaarts.org)

**ALABAMA SHAKESPEARE FESTIVAL (ASF):** The largest professional theatre in Alabama and one of the largest Shakespeare festivals worldwide. ASF has been a leader in performing arts throughout the state and country. The ASF complex is located in Montgomery, AL only 50 miles from Auburn (1 Festival Drive). [www.asf.net](http://www.asf.net)

**THE COLUMBUS MUSEUM:** One of the Southeast's largest museums has a unique focus on American art/regional history, located 35 miles from Auburn in Columbus, GA (1251 Wynnton Rd.). [www.columbusmuseum.com](http://www.columbusmuseum.com)

# EVENTS

The City organizes 33 special events each year. Events are also held by Auburn University and other organizations in the surrounding area for citizens to enjoy.

## 2022 CITY OF AUBURN CALENDAR OF EVENTS:



POLAR PLUNGE BENEFITING LEE COUNTY SPECIAL OLYMPICS	Jan. 29
DADDY DAUGHTER DATE NIGHT	Feb. 11,12
EMPTY BOWLS OPELIKA DENSON DRIVE	Feb. 12
ACTIVE AUBURN MARDI GRAS ZUMATHON	Feb. 26
ACTIVE AUBURN TRAILS & TRAILS FUN RUN	Mar. 19
BARK IN THE PARK	Mar. 19
BREAKFAST WITH THE BUNNY	Apr. 9
THE EGGCELLENT EASTER SCAVENGER HUNT	Apr. 9,10,11,12,13
EASTER EGG HUNT	Apr. 16
AUBURN CITYFEST JURIED ART SHOW & PREVIEW RECEPTION	Apr. 28
21ST ANNUAL AUBURN CITYFEST	Apr. 30
SUNDOWN CONCERT AT KIESEL PARK	May 5,12,19,26
FISHING RODEO	May 14
CITY MARKET	May 21,28
CITY MARKET	Jun. 4,11,25
SUMMERNIGHT DOWNTOWN ART WALK & PARADE	Jun. 10
FAMILY SPLASH AT SAMFORD POOL	Jun. 11
CITY MARKET/DAY IN CLAY	Jun. 18
FLOAT-IN-MOVIE	Jun. 25
CITY MARKET	Jul. 2,9,16,23,30
INDEPENDENCE DAY CELEBRATION	Jul. 4
FLOAT-IN-MOVIE	Jul. 16
ITTY BITTY AUBURN SCAVENGER HUNT	Aug. 1-31
CITY MARKET	Aug. 6,13,20,27
SUNDOWN CONCERT AT KIESEL PARK	Sep. 22,29
SUNDOWN CONCERT AT KIESEL PARK	Oct. 13,20
CITY MARKET HARVEST MARKET TOWN CREEK PARK	Oct. 15
FRIDAY FRIGHT NIGHT MOVIE	Oct. 21
ACTIVE AUBURN HAUNTED ZUMBATHON	Oct. 22
DOWNTOWN TRICK OR TREAT	Oct. 31
HOLIDAY ART SALE	Nov. 19
JINGLE JOG 5K & SANTA STROLL FUN RUN	Dec. 3
POLAR EXPRESS HOLIDAY CELEBRATION	Dec. 3

**AUBURN CHRISTMAS PARADE:** Celebrated annually downtown in early December in Auburn, Alabama.

**AUBURN FLORAL TRAIL:** Sponsored by the Auburn Beautification Council, City of Auburn, and the Auburn-Opelika Tourism Bureau, the trail includes over 14 miles of beautiful spring blooms in Auburn, Alabama. The trail begins in early March with a north trail (3.5 miles), south trail (10.5 miles), and an optional trail. Trail directions are on the website. [www.auburnalabama.org/environmental-services/auburn-floral-trail](http://www.auburnalabama.org/environmental-services/auburn-floral-trail)

**A-DAY:** The final scrimmage for Auburn University's football team held at Jordan-Hare Stadium in the Spring. The practice scrimmage draws approximately 50,000 fans each year. [www.auburntigers.com](http://www.auburntigers.com)

**AUBURN UNIVERSITY FOOTBALL FAN DAY:** Auburn fans have the chance for autographs and pictures with players, coaches, cheerleaders and Auburn's beloved mascot "Aubie" each August. [www.auburntigers.com](http://www.auburntigers.com)



**PIONEER DAY:** Formerly known as the Syrup Sopping, the annual event will be held in October in Loachapoka, AL only five miles west of Auburn. [www.leecountyhistoricalsociety.org/pioneerday](http://www.leecountyhistoricalsociety.org/pioneerday)



# COMMERCIAL DEVELOPMENT



**A positive business environment, a viable workforce, a fantastic education system and a high quality of life have all fueled Auburn's economy and growth over the years. Driven by continued population growth in East Alabama, rapidly expanding tourism and travel marketing, Auburn continues to experience steady commercial growth.**



The downtown area continues to attract new unique retailers and restaurants. The exit 57 area at Bent Creek Road area has expanded to accommodate Sam's Club, Academy Sports, and several restaurants and retailers. The Shoppes at the Heart of Auburn on South College Street opened in 2014 including a CVS Pharmacy as the anchor tenant along with other restaurants and retailers. Two Publix shopping centers (Hamilton Place and Shoppes at Cary Creek) opened within the last five years. These developments include adjacent retailers and restaurants as well. The Auburn Mall, anchored by Belk and Dillard's, offers 524,097 square feet of retail shopping and dining. The Auburn Mall is home to more than 60 specialty retailers, located at the intersection of E. University Drive/Opelika Road. The West Pace Village development off exit 51/S. College St. will continue to develop. Two new hotels and three auto dealerships are the development's current tenants. Two new Walmart Neighborhood Market stores opened as over the last few years to serve the community. Lastly, the Flint's Crossing and Market Square Shopping Centers completed major renovations for more attractive locations to shop and dine.

## VARIOUS COMMERCIAL PROJECTS WITH ASSISTANCE FROM THE CITY:

Academy Sports	Earth Fare	Publix (2)
Acre	Family Dollar	Red Lobster
Ace Hardware	Five Guys	Sam's Club
Applebee's	Flint's Crossing Shopping Center	Shoppes at Cary Creek
Auburn Furniture	Glendean Shopping Center	Shoppes at Heart of Auburn
Auburn Mall	Hamilton Place Shopping Center	Sleep Inn
Auburn University Club	Hampton Inn	Stein Mart
Auburn University Hotel	Hyatt House	SunSouth Auburn
Berney Office Solutions	Hyundai of Auburn	The Depot
Bob's Victory Grille	Kia of Auburn	Tiger Crossing Shopping Center
Carl Gregory Ford-Lincoln	Magnolia Plaza	Tiger Theatre
Central Park	Market Square Shopping Center	Walmart Neighborhood Market (2)
Chipotle Mexican Grill	Niffer's Place	Walmart Supercenter
CVS Pharmacy (3)	Ogletree Village	Ware Jewelers
Downtown Facades	Old Towne Station	West Pace Village
Dunkin Donuts	Pieology	Wynnsong 16

# INDUSTRIAL DEVELOPMENT



**Since 1994, the City has announced more than 7,400 jobs and over \$2.3 billion in capital investment. In the last 10 years, 84 new and expanding industrial projects have been announced with over 2,500 jobs and more than \$1.4 billion in capital investment.**

Auburn's diversified industrial base has been built around small to medium-sized technology based, value added manufacturing companies employing more than 5,000 people. The industrial base includes 44 companies housed in four different parks producing a wide variety of parts including: aviation components, engines, filtration parts, power transmission parts, medical plastics, plastics packaging, wireless technologies and the following automotive parts: axles, aluminum components, driveshafts, engine components, metals, plastics, solenoid valves, and textiles.



**AUBURN TECHNOLOGY PARK SOUTH:** Developed in 1994, the technology park is located off South College St. 3/4 mile south of Interstate 85, Exit 51, and one mile south-east of Interstate 85, Exit 50. The Auburn Technology Park South is occupied by eight manufacturing companies based in Germany, Japan, Korea, and the United States employing a total of approximately 1,275.



**AUBURN TECHNOLOGY PARK NORTH:** Developed in 2002, the technology park is located off South College St. and Cox Rd. on West Veterans Blvd. one mile northwest of Interstate 85, Exit 51, and 1.5 miles northeast of Interstate 85, Exit 50. The Auburn Technology Park North is occupied by eight manufacturing companies based in Korea and the United States employing a total of approximately 1,200.



**AUBURN TECHNOLOGY PARK WEST:** Developed in 2008, the technology park is located off Beehive Rd. (Lee Rd. 10) and Corporate Pkwy. three miles northwest of Interstate 85, Exit 51, and one mile northwest of Interstate 85, Exit 50. The Auburn Technology Park West is occupied by 11 manufacturing companies based in Germany, Israel, Italy, Korea, Portugal, and the United States employing a total of approximately 1,575.



**AUBURN INDUSTRIAL PARK:** Developed in 1974, the City's first industrial park is located off Shug Jordan Pkwy. and Webster Rd. three miles northwest of Interstate 85, Exit 51 and four miles north of Interstate 85, Exit 50. The Auburn Industrial Park is occupied by 19 manufacturing companies based in Germany, Korea, and the United States employing a total of approximately 1,000.



# INDUSTRIAL DEVELOPMENT

## AUBURN TECHNOLOGY PARK SOUTH MANUFACTURING COMPANIES



COMPANY	PRODUCT	HEADQUARTERS
Briggs & Stratton, LLC	Gasoline Engines	Milwaukee, WI
Capitol Plastic Products, LLC	Custom Plastics Packaging	Amsterdam, NY
Coachcomm, LLC	Wireless Technologies	Auburn, AL
Donaldson Company, Inc.	Filtration Solutions	Bloomington, MN
I-PEX USA Manufacturing, Inc.	Automotive Plastic Components	Japan
Leehwa America, Inc.	Automotive Plastic Components	Korea
Revere Plastics Systems, LLC	Automotive Plastic Components	Novi, MI
Straehle + Hess USA, Inc.	Automotive Textiles	Germany

## AUBURN TECHNOLOGY PARK NORTH MANUFACTURING COMPANIES



COMPANY	PRODUCT	HEADQUARTERS
Capitol Plastic Products, LLC	Custom Plastics Packaging	Auburn, AL
CSP Technologies, Inc.	Custom Plastics Packaging	Auburn, AL
K.C. Sol-Tech, Inc.	Tool & Die	Korea
Lotte Chemical Alabama Corporation	Glass Fiber Reinforced Thermoplastics	Korea
Pyongsan America, Inc.	Automotive Plastic Components	Korea
SCA, Inc.	Automotive Plastic Components	Korea
WPM Holdings, LLC	Automotive Aluminum Wheels	Denver, CO
YC Manufacturing, LLC	Automotive Metal Components	Korea



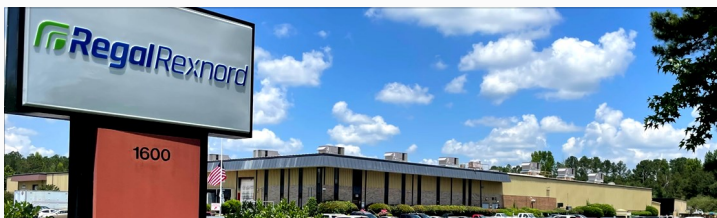
# INDUSTRIAL DEVELOPMENT

## AUBURN TECHNOLOGY PARK WEST MANUFACTURING COMPANIES



COMPANY	PRODUCT	HEADQUARTERS
2a USA, Inc.	Automotive Aluminum Components	Italy
Arkal Automotive USA, Inc.	Automotive Plastics	Israel
Donghee America, Inc.	Automotive Plastic Fuel Tanks	Korea
GE Aviation	Jet Engine Components	Cincinnati, OH
Innovative Tech, Inc.	Automotive Plastics	Korea
Rausch & Pausch, L.P.	Automotive Solenoid Valves	Germany
Schmidt Automotive USA, L.P.	Automotive Engine Components	Germany
SiO2 Medical Products, Inc.	Medical Plastics	Auburn, AL
Shinhwa Auto USA Corporation	Automotive Driveshafts	Korea
Seohan Auto USA Corporation (Plant 2)	Automotive Axles	Korea
Sodecia Automotive Auburn, L.P.	Automotive Metal Components	Portugal

## AUBURN INDUSTRIAL PARK MANUFACTURING COMPANIES



COMPANY	PRODUCT	HEADQUARTERS
Archangel Systems, Inc.	Inertial Sensing Systems	Auburn, AL
ATS Alabama Corporation	Automotive Plastic Components	Korea
Builders First Source Millwork Corporation	Windows & Doors	Auburn, AL
CNJ, Inc.	Automotive Brake Discs	Korea
Daewon America, Inc.	Automotive Metal Springs	Korea
Gummoon USA, LLC	Automotive Plastic Components	Korea
ID Plastics, L.P.	Automotive Plastics	Germany
Intramicon, Inc.	Microfibrous Materials	Auburn, AL
Leonard Peterson & Company, Inc.	Wood Lab & Office Furniture	Auburn, AL
MDT Armor Corporation	Armored Vehicles	Ann Arbor, MI
Nashville Wire Products Mfg. Co, Inc.	Wire Components	Nashville, TN
Regal Rexnord Corporation	Gear Couplings	Milwaukee, WI
Rice Signs, LLC	Road Signage	Auburn, AL
Seohan Auto USA Corporation	Automotive Axles	Korea
Seohan-NTN Driveshaft USA Corporation	Automotive Driveshafts	Korea
Swigro Additive Manufacturing, Inc.	Additive Components	Auburn, AL
Tennibot, LLC	Robotic Tennis Ball Collectors	Auburn, AL
Thermo Fisher Scientific, Inc.	Plastics Packaging	Waltham, MA
Winkelmann Flowform Technology, L.P.	Flowformed Metal Components	Germany



# WORKFORCE

Auburn's workforce consists of Auburn citizens and residents from around Lee County. A significant portion of the city's workforce also commutes from the surrounding counties within a 60-minute drive. No unions exist in Auburn. Alabama is a "Right-to-Work" state.

## AUBURN LABOR:

CIVILIAN LABOR FORCE	EMPLOYMENT	UNEMPLOYMENT	UNEMPLOYMENT RATE
32,434	31,742	692	2.1%

Alabama Department of Labor - May 2022

## LEE COUNTY LABOR:

CIVILIAN LABOR FORCE	EMPLOYMENT	UNEMPLOYMENT	UNEMPLOYMENT RATE
78,807	77,130	1,677	2.1%

Alabama Department of Labor - May 2022

## LABOR WITHIN 60-MINUTE DRIVE

CIVILIAN LABOR FORCE	EMPLOYMENT	UNEMPLOYMENT	UNEMPLOYMENT RATE
450,091	437,500	12,591	2.8%

Alabama Department of Labor - May 2022; Georgia Department of Labor - May 2022



**AUBURN TRAINING CONNECTION (ATC):** Assists the training needs of area industry. ATC offers programs including Career Technical Education at Auburn High School, Dual Enrollment, and Industrial Maintenance Technology at Southern Union State Community College. The non-profit has been recognized nationally and internationally with awards in workforce development. ATC is managed by the City's Economic Development Workforce division. [www.auburnalabama.org/workforce](http://www.auburnalabama.org/workforce)

**AUBURN TECHNICAL ASSISTANCE CENTER (ATAC):** Assists businesses, industry, not-for-profits and government agencies learn how to improve and enhance their competitiveness and efficiency through a variety of educational, training, consulting/outreach services. ATAC is Auburn University's affiliate of the Alabama Technology Network (ATN), Economic Development Administration University Center and the College of Business. [www.auburnworks.org](http://www.auburnworks.org)



**ALABAMA INDUSTRIAL DEVELOPMENT TRAINING (AIDT):** A division Alabama's Department of Commerce, AIDT encourages economic development through job-specific training. Services are offered at no cost, to new and expanding businesses throughout the State. AIDT is the first state workforce training organization in the U.S. to earn international certification for its quality management system. [www.aidt.edu](http://www.aidt.edu)

**ALABAMA CAREER CENTERS:** Serves job seekers in employment opportunities as well as employers in job posting and job training. [www.joblink.alabama.gov/ada/r](http://www.joblink.alabama.gov/ada/r)

# TAXES & INCENTIVES

	CITY	COUNTY	SCHOOLS	STATE	OTHER
<b>RATE:</b>	26 MILS	14.5 MILS	3 MILS	6.5 MILS	4 MILS*
<b>Official Ratio of Assessment</b> (20% of Market Value)					
<b>ACTUAL RATIO OF ASSESSMENT:</b>					
<b>Residential **</b>	10%	10%	10%	10%	10%
<b>Industrial Real</b>	20%	20%	20%	20%	20%
<b>Industrial Personal</b>	20%	20%	20%	20%	20%
<b>Production, Machinery &amp; Equipment</b>	20%	20%	20%	20%	20%
<b>Raw Materials Inventory</b>	N/A	N/A	N/A	N/A	N/A
<b>Goods-in-Process Inventory</b>	N/A	N/A	N/A	N/A	N/A
<b>Finished Goods Inventory</b>	N/A	N/A	N/A	N/A	N/A

\*Hospital Tax, 2.5 mils; Lee County Dependent Children, 1.5 mils    \*\* With Homestead Exemption (Without Homestead Exemption, 20%)

**SALES TAX:** 9% (State of Alabama - 4%, City of Auburn - 4%, Lee County - 1%)

**OCCUPATIONAL LICENSE FEE:** 1% of gross income per year of each person who works in the City.

**LOCAL TAXATION POLICY FOR INDUSTRY:** City will consider tax abatements for industrial projects.

**BUSINESS LICENSE FEE:** Levied for any businesses with the privilege of conducting business in the city limits of Auburn. The City's business license fee is based on gross receipts of business conducted.

**BUSINESS PRIVELEGE TAX:** Applies to corporations conducting business in Alabama.

**CORPORATE INCOME TAX:** Levied based on the corporation's net taxable income derived from business being conducted within the state of Alabama.

**PROPERTY TAX:** Classified/assessed at 20% of fair market value for non-exempt business property in Alabama.

**JOBS CREDIT:** Annual refund for companies of up to 3% of the previous year's gross payroll for up to 10 years; for companies employing at least 12% veterans, up to an additional .5% credit is available for veteran's wages.

**INVESTMENT CREDIT:** Available for up to 1.5% of the qualified capital investment expenses for up to 10 years.

**PROPERTY TAX ABATEMENTS:** Available to qualified new/expanding industries for non-educational taxes on equipment and building for a period of up to 10 years.

**SALES & USE TAX ABATEMENTS:** Available to qualified new/expanding industries for non-educational taxes on construction materials and equipment used in manufacturing.

**CORPORATE INCOME TAX CREDITS & DEDUCTIONS:** Available for Alabama Corporate taxpayers.

**INDUSTRIAL DEVELOPMENT GRANT PROGRAM:** State grant to pay for site preparation costs for property owned by public corporations including municipalities, industrial development boards, etc.

**INDUSTRIAL REVENUE BONDS:** Used as long-term financing for up to 100% of a project for land acquisition, buildings, site prep/improvements; building construction; furnishings, fixtures and equipment; and soft costs.

**SECTION 108 LOANS:** The City offers a micro-loan and economic development loan for eligible projects.