



COMMUNITY PROFILE



CONTENTS



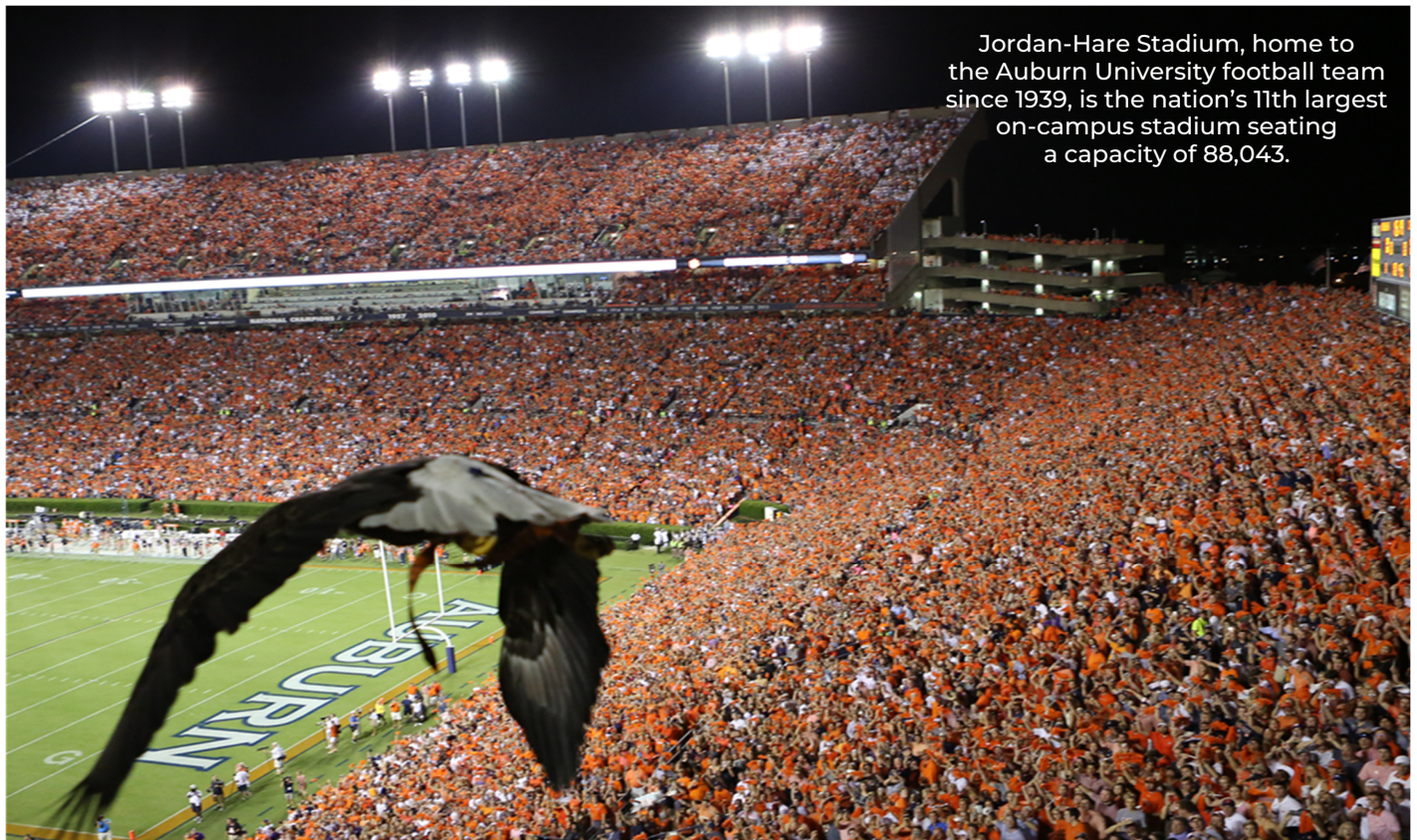
Welcome	1
National Recognition	2
Location & Transportation	3-5
Demographics & Housing	6
Public Education	7
Colleges & Universities	8-9
Research Park	10
Industrial Development	11-12
Workforce	13
Healthcare	14
Parks & Recreation	15-17
Cultural Arts	18
Events	19
Municipal	20
Taxes & Incentives	21

WELCOME

Founded in 1836, Auburn is one of the South's most forward-thinking cities. With a nationally recognized public school system and a fast-growing, diverse population, Auburn blends innovation with a deep sense of community.

As the home of Auburn University (AU), the city offers the energy and amenities of a larger city while preserving the welcoming spirit of a small town. The University's presence fosters a strong sense of pride. Residents and alumni alike proudly call Auburn home, united by their connection to this storied institution.

As a proud member of the Southeastern Conference (SEC), Auburn University hosts exciting sporting events year-round, drawing fans and families together in celebration. The excitement doesn't stop at sports – major theater productions, concerts and renown speakers regularly add even more cultural opportunities for Auburn residents and visitors.



Jordan-Hare Stadium, home to the Auburn University football team since 1939, is the nation's 11th largest on-campus stadium seating a capacity of 88,043.

Downtown Auburn, nestled beside AU's main campus, is the city's beating heart. It's a lively mix of local shops, restaurants, coffee shops, bookstores, hotels and nightlife. Toomer's Corner, a beloved Auburn tradition since the late 1800s, is the centerpiece of downtown. It's where the Auburn family celebrates victories and connects at community events, all with a glass of Toomer's Drug's fresh squeezed lemonade in hand. The Tiger Trail winds through downtown, honoring Auburn's legendary athletes, coaches, and administrators with commemorative plaques along the sidewalks.

Auburn's international reach is impressive, with nearly 1,800 international students and over 500 international employees at the University. The city is also home to 27 foreign-based industries, contributing to a cosmopolitan atmosphere where more than a third of residents hail from outside Alabama.

With an average annual temperature of 64°F, Auburn enjoys a warm, sunny climate and mild winters that are perfect for enjoying everything the town has to offer.

NATIONAL RECOGNITION



2025

Top 100 Best Places to Live in the U.S.



2025

23RD Most Dynamic Metro in the U.S.



2025

4TH Best Performing Small City for Economic Growth in the U.S.



2024

2ND Best Small Metro for Industrial Growth in the U.S.



2024

5TH Best City to Move to in the South.



2024

4TH Best Public Schools in Alabama.



2023

10TH Most Charming College for Small Towns in the South.



2019

Top Place to Retire in the U.S.

2022

3RD Best College Town in the South.



2019

Top 100 Places to Live in the U.S.



2019

13TH Best Small Place for Business & Careers in the U.S.



2019

Top 20 College Town to Start a Career in the U.S.



2019

Most Educated City in Alabama.



2017

16TH Best City for Job Creation in the U.S.



2015

Top 100 Educated Cities in the U.S.

LOCATION & TRANSPORTATION

Auburn is located in east central Alabama along Interstate 85 (I-85) in Lee County.



The city is easily accessible by four major highways including Interstate 85 north-south at three interchanges: Exit 50, Exit 51, and Exit 57.



Interstate 85

I-85 provides access via Exit 50 - Cox Rd; Exit 51 - S College St; and Exit 57 - Bent Creek Rd.



US Highway 280

US Hwy 280 provides access via N College St, Shelton Mill Rd, and Pepperell Pkwy/Opelika Rd.



US Highway 29

US Hwy 29 provides access via S College St from the south.



AL Highway 14

AL Hwy 14 provides access via Martin Luther King Dr from the west.

LOCATION & TRANSPORTATION

The centralized location provides access to several major cities, and the Gulf of America, one of the world's most popular vacation destinations, is only a few hours away.

PROXIMITY TO SELECT CITIES					
CITY, STATE	DRIVE TIME (±)	CITY, STATE	DRIVE TIME (±)	CITY, STATE	DRIVE TIME (±)
Columbus, GA	35 min	Montgomery, AL	45 min	Atlanta, GA	1 hr 40 min
Birmingham, AL	1 hr 55 min	Tuscaloosa, AL	2 hr 30 min	Athens, GA	3 hr
Mobile, AL	3 hr	Pensacola, FL	3 hr 15 min	Huntsville, AL	3 hr 30 min
Tallahassee, FL	3 hr 30 min	Chattanooga, TN	3 hr 30 min	Biloxi, MS	4 hr
Greenville, SC	4 hr 15 min	Savannah, GA	4 hr 30 min	Jackson, MS	4 hr 40 min
Knoxville, TN	4 hr 40 min	Columbia, SC	4 hr 45 min	Nashville, TN	4 hr 45 min
Gainesville, FL	5 hr	New Orleans, LA	5 hr	Jacksonville, FL	5 hr 15 min
Memphis, TN	5 hr 30 min	Baton Rouge, LA	5 hr 50 min	Charlotte, NC	6 hr
Charleston, SC	6 hr 20 min	Orlando, FL	6 hr 30 min	Tampa, FL	6 hr 45 min

Five airports are located within 110 miles including the Atlanta International Airport, the world's busiest airport averaging 2,100 daily arrivals and departures.

Hartsfield-Jackson Atlanta International Airport [Atlanta-International-Airport.com](https://atlanta-international-airport.com)

Connects travelers in Atlanta, GA to over 220 domestic and international destinations through 23 major airlines.

Birmingham-Shuttlesworth International Airport [FlyBirmingham.com](https://flybirmingham.com)

Served by American, Delta, Southwest, and United Airlines with nonstop flights to 20 U.S. destinations.

Montgomery Regional Airport [FlyMGM.com](https://flymgm.com)

Served by American and Delta Airlines with flights to Atlanta, Charlotte, Dallas, and Washington D.C.

Columbus Airport [FlyColumbusGA.com](https://flycolumbusga.com)

Served by American and Delta Airlines accommodating over 100,000 passengers each year.

Auburn University Regional Airport [AUOAirport.com](https://auoairport.com)

Public use, general aviation airport located in Auburn, AL, serving the Auburn community and Auburn University.

CSXT Class I rail runs through the city's center, and three deepwater ports are located within 290 miles as well as two inland river ports located within 50 miles.

Port of Mobile [ALPorts.com](https://alports.com)

The 2nd fastest growing port in the U.S., handling over 55 million tons of cargo annually for exporters/importers.

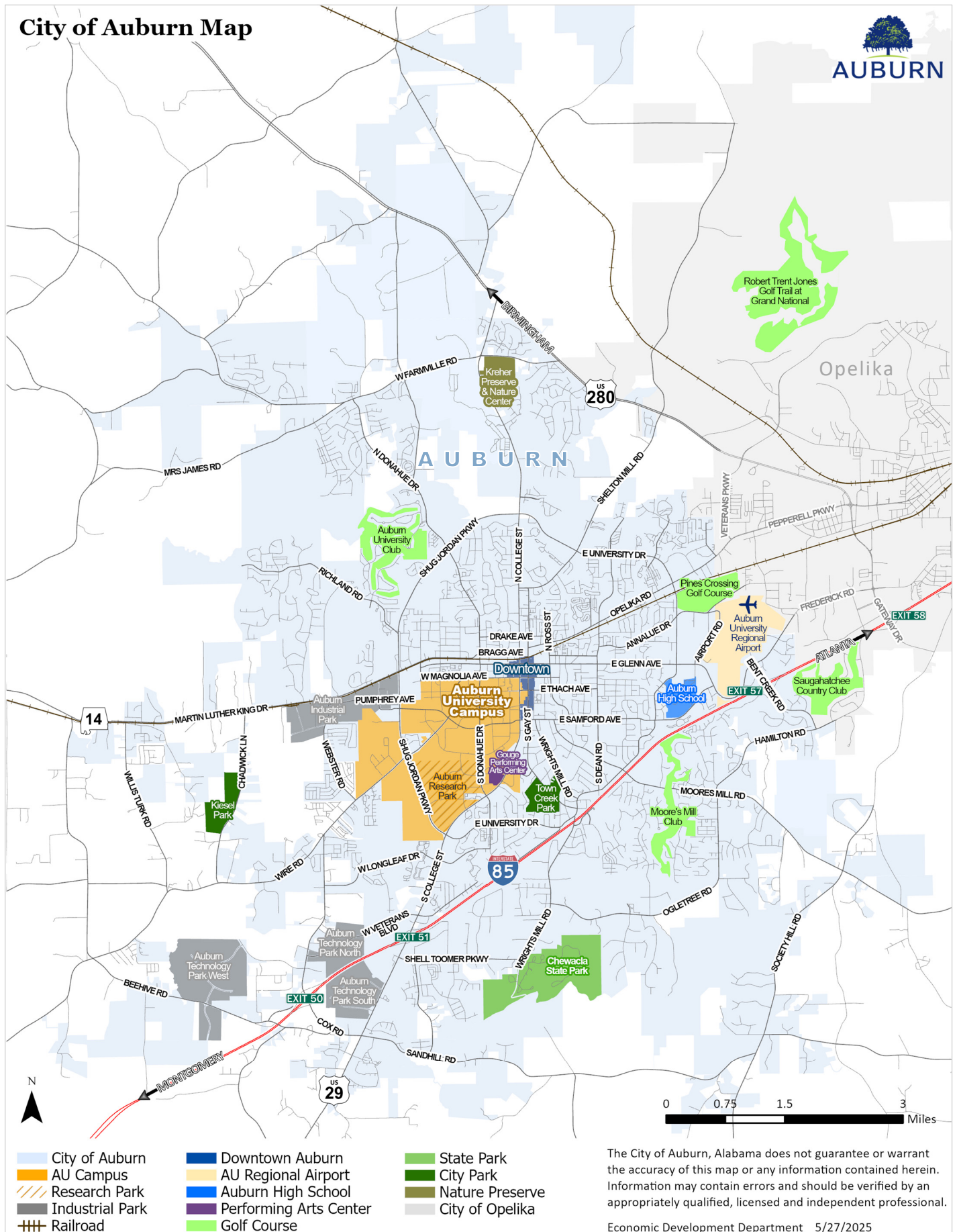
Port of Savannah [GAPorts.com](https://gaports.com)

The 3rd busiest container operation and the single largest container terminal in the U.S.

Port of Brunswick [GAPorts.com](https://gaports.com)

The nation's busiest port for autos and heavy equipment with over 2 million tons of cargo in 2024.

LOCATION & TRANSPORTATION



DEMOGRAPHICS & HOUSING

Since 1960, the city of Auburn's population has increased approximately 3% per year.
Over the last 10 years, the city has experienced nearly 40% population growth.

AREA POPULATION	
City of Auburn	83,761
Auburn-Opelika MSA	201,585
Lee County	187,847

Data.Census.gov - 2024 ACS 1-Yr Est.

HISTORICAL POPULATION BY DECADE							
	1960	1970	1980	1990	2000	2010	2020
City of Auburn	16,261	22,767	28,471	33,830	42,896	53,380	76,143
Lee County	49,754	61,268	76,283	87,146	115,092	140,247	174,241

Data.Census.gov - Decennial Census 1960-2020



GENDER	
Male	48%
Female	52%

INCOME	
Average Family Income	\$137,404
Average Household Income	\$95,798

EDUCATIONAL ATTAINMENT	
Less than 9th Grade	2.1%
9th to 12th Grade, No Diploma	1.5%
High School Graduate	10.9%
Some College, No Degree	14.2%
Associate's Degree	3.6%
Bachelor's Degree	35.2%
Graduate or Professional Degree	32.5%
High School Graduate or Higher	96.5%
Bachelor's Degree or Higher	67.8%

AGE	
Median Age	24.2
Under 18 yrs	20.7%
18 yrs & over	79.3%
65 yrs & over	8.7%
20 to 24 yrs	20.1%
25 to 44 yrs	25.4%

RACE	
White	72.3%
Black or African American	17.9%
American Indian & Alaska Native	2.2%
Asian	10%
Some Other Race	6.5%
Hispanic or Latino	6.8%

Data.Census.gov - 2024 ACS 1-Yr Est. - Auburn

The city has a wide range of housing options due to a diverse population including families, students, young professionals and retirees.



HOUSING STATS 2024	
Residential Properties Sold	1,050
Residential Average Sold Price	\$471,893
Residential Median Sold Price	\$411,032
Condos Sold	223
Condos Average Sold Price	\$282,000
Condos Median Sold Price	\$317,546

HOUSING DATA - U.S. CENSUS	
Households	30,006
Families	15,842
Owner-Occupied Housing Units	52.3%
Renter-Occupied Housing Units	47.7%
Median Home Value	\$392,900
Median Monthly Rent	\$1,159

Lee County Assoc. of Realtors 2024 - Auburn; Data.Census.gov - 2024 ACS 1-Yr Est. - Auburn

PUBLIC EDUCATION

The Auburn City Schools system continues to be one of the fastest growing in Alabama and consistently ranks among the top school systems in the state due to continued support from the City and community and a progressive use of technology.



AUBURN CITY SCHOOLS FACTS

Total School Campuses	14
Total Student Enrollment 2024-2025	9,438
Full-time Employees	1,174
Average Teacher Experience	13.5 years
Teachers with Advanced Degrees	70%
Student-Teacher Ratio	15:1
Average ACT Score	21.6 (AL-17.7, U.S.-19.8)
Countries of Origin Among Students	50
Languages Spoken in Student Homes	33
Total Graduates 2024	707
Graduation Rate	97%
Total Scholarships Offered	\$26 million
Awarded Scholarships in Senior Class	61%
Colleges & Universities Represented	194
National Merit Finalists	6
National Merit Commended Scholars	5
Presidential Scholar Nominees	1
AP Scholars	37
IB Diploma Candidates	18

School campuses include 10 elementary schools, 2 middle schools, 1 junior high school, and 1 high school. A second high school is scheduled to open in 2028.



AUBURN CITY SCHOOLS CAMPUSES

Auburn High School - AHS	Dean Road Elementary School	Richland Elementary School
Auburn Junior High School - AJHS	Drake Middle School	Woodland Pines Elementary School
Auburn Early Education Center	East Samford School	Wrights Mill Road Elementary School
Cary Woods Elementary School	Ogletree Elementary School	Yarbrough Elementary School
Creekside Elementary School	Pick Elementary School	

AuburnSchools.org



Auburn Public Library

The City's Public Library offers residents the following services:

- ⇒ Books
- ⇒ Audio Books
- ⇒ Streaming Video
- ⇒ Magazines
- ⇒ eBooks
- ⇒ Test Proctoring
- ⇒ Newspapers
- ⇒ eAudiobooks
- ⇒ Informational Assistance
- ⇒ DVDs & CDs
- ⇒ Digital Magazines

AuburnAL.gov/Library

COLLEGES & UNIVERSITIES

Auburn University (AU), established in 1856, is a comprehensive land, space and sea grant public institution located adjacent to downtown Auburn. The University's main campus consists of 402 buildings and covers more than 1,800 acres.



2025 National Rankings



#51 Public University
#57 Engineering Undergraduate
#63 Most Innovative Schools
#105 National University



#1 Happiest Students
#2 Best Athletic Facilities
#4 Best Town-Gown Relations
#6 Friendliest Students
#8 Best Quality of Life

AU STUDENT ENROLLMENT - FALL 2024

In-State Students (53%)	18,201
Out-of-State Students (47%)	15,944
TOTAL ENROLLMENT (All-time High):	34,145

HISTORICAL AU ENROLLMENT BY DECADE

1960	1970	1980	1990	2000	2010	2020
8,829	14,229	18,603	21,537	21,860	25,078	30,737

More than 150 undergraduate majors are available for students with 12 colleges. The Graduate School offers a large number of degree programs as well.



AU COLLEGES

College of Agriculture
College of Architecture, Design & Construction
Raymond J. Harbert College of Business
College of Education
Samuel Ginn College of Engineering
College of Forestry, Wildlife & Environment
College of Human Sciences
College of Liberal Arts
College of Nursing
Harrison College of Pharmacy
College of Sciences & Mathematics
College of Veterinary Medicine

The University has a long tradition of excellence in engineering education with the top ranked program in Alabama and consistently ranking among the top nationally.

AU Samuel Ginn College of Engineering

Prominent Auburn University Engineering alumni include four astronauts and Tim Cook, CEO of Apple, Inc. The College enrolls a 6,700 undergraduate/graduate students specializing in the following degree/certificate options:

- ⇒ Aerospace
- ⇒ Biosystems
- ⇒ Chemical
- ⇒ Civil & Environmental
- ⇒ Computer Science & Software
- ⇒ Dual Degrees
- ⇒ Electrical & Computer
- ⇒ Engineering Management
- ⇒ Industrial & Systems
- ⇒ Master of Engineering
- ⇒ Materials
- ⇒ Mechanical
- ⇒ Polymer & Fiber
- ⇒ Wireless

Auburn.edu

COLLEGES & UNIVERSITIES

Southern Union State Community College (SUSCC) in adjacent city of Opelika, AL, offers academic programs for transferability, technical programs for specialized competencies and health sciences programs for training in the health field.



Academic Division

Offers the Associate in Science (A.S.) and Associate in Applied Science (A.A.S.) degrees. The division consists of the following departments: Business, Child Development, Humanities & Fine Arts, Language Arts, Mathematics, Science, and Social Science.

Health Sciences Division

Programs include: Paramedic, Nursing, ADN Mobility, Nursing Assistant, Medication Assistant Certified, Medical Assistant Technology, Radiologic Technology, Surgical Technology, Therapeutic Massage, Wellness and Sport Sciences, Physical Therapist Assistant, and Veterinary Technology.

Technical Division

Offers degree programs leading to an Associate in Occupational Technologies, including Air Conditioning and Refrigeration, Automotive Service, and Cosmetology. Degree programs are available for an Associate in Applied Science, including Aviation Technology, Engineering and Design, Electrical Technology, Advanced Manufacturing with concentrations in Machine Shop, Mechatronics, Plastics Engineering Technology, and Welding. The division also offers certificates and short-term certificates for all programs.

SUSCC.edu

PROXIMITY TO OTHER NEARBY COLLEGES & UNIVERSITIES

INSTITUTION	CITY, STATE	DRIVE TIME (±)	WEBSITE
Tuskegee University - TU	Tuskegee, AL	25 min	Tuskegee.edu
Central Alabama Community College - CACC	Alexander City, AL	40 min	CACC.edu
West Georgia Technical College	LaGrange, GA	45 min	WestGATech.edu
LaGrange College	LaGrange, GA	45 min	LaGrange.edu
Chattahoochee Valley Community College - CVCC	Phenix City, AL	50 min	CV.edu
Troy at Phenix City	Phenix City, AL	50 min	Troy.edu
Auburn University at Montgomery - AUM	Montgomery, AL	50 min	AUM.edu
Columbus State University - CSU	Columbus, GA	50 min	ColumbusState.edu
Columbus Technical College	Columbus, GA	50 min	ColumbusTech.edu
Alabama State University - ASU	Montgomery, AL	55 min	AlaSU.edu
Faulkner University	Montgomery, AL	55 min	Faulkner.edu

RESEARCH PARK

The Auburn Research Park leverages Auburn University's intellectual property assets to technology-based economic development by facilitating technology transfer, developing industry partnerships, nurturing new business ventures, and attracting knowledge-based companies to the park.



Located on the south portion of Auburn University's campus, The Park consists of more than 170 acres and seven first-class facilities.

The Research & Innovation Center

The 105,000 sf unique, mixed use facility is home to the Office of the Senior VP for Research and Economic Development, the New Venture Accelerator, Fullsteam Solutions, a café, and new event center.

Auburn University MRI Research Center

The facility houses Siemens Skyra open-bore 3 Telsa (T) MRI scanner for clinical and research use and recently upgraded Siemens 7T MRI scanner for research use.

Auburn Medical Pavilion

Operated by East Alabama Health, the new 80,000 sf health sciences facility houses a free standing emergency department, an ambulatory surgery center with four surgical suites as well as a pharmacy and more.

Center for Advanced Science, Innovation, and Commerce

The 82,000 sf facility includes 21 lab spaces along with shared spaces housing research groups from Agriculture, Engineering, Science & Mathematics, Forestry & Wildlife Sciences, and Architecture, Design, and Construction.

Auburn Research & Technology Foundation Building

Research Park Building #1 is a 43,793 sf multi-tenant facility with private sector and university tenants. The facility was a result of a partnership between the State of Alabama, Auburn University, and the City of Auburn.

Edward Via College of Osteopathic Medicine - VCOM

The Auburn campus offers students the degree of Doctor of Osteopathic Medicine at this 100,000 sf facility.

Big Blue Marble Academy

The 14,000 sf center offers high quality childcare for The Park and University communities.

ThePark.Auburn.edu

INDUSTRIAL DEVELOPMENT

Auburn's diversified industrial base consists of 42 small to mid-sized, technology-based, value-added manufacturing corporations currently employing more than 4,500 people. Located in the City's four industrial and technology parks, the companies produce a wide variety of parts serving nearly 20 different market segments.



Established as the City's first designated area for new industry locations in the mid-70s, the Auburn Industrial Park is now home to 17 multi-national manufacturing firms.

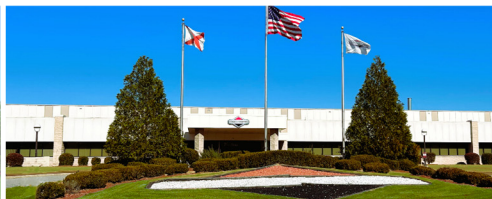


AUBURN INDUSTRIAL PARK

COMPANY	PRODUCT	MARKET	COUNTRY OF ORIGIN
ADS-TEC Energy, Inc	EV battery charging stations	Automotive	Germany
Archangel Systems, Inc	Inertial sensing systems	Aerospace, defense	United States
CNJ, Inc	Brake discs	Automotive	Korea
Gamelab, LLC	Gaming facility solutions	Universities, entertainment	United States
Gummoon USA, LLC	Plastic radiator grilles	Automotive	Korea
Intramicon, Inc	Microfibrous materials, etc.	Aerospace, defense, etc.	United States
Leonard Peterson & Co, Inc	Wood laboratory casework	Institutional facilities	United States
MDT Armor Corp	Armored vehicles	Defense	Israel
NanoPrintek, Inc	Dry multimaterial printers	Institutional facilities, etc.	United States
Nashville Wire Products Mfg Co, Inc	Wire systems	Refrigeration	United States
Regal Rexnord Corp	Gear couplings	Construction, energy, etc.	United States
Rice Signs, LLC	Signage, safety components	Roadways, construction	United States
Seohan Auto USA Corp	Axles	Automotive	Korea
Seohan-NTN Driveshaft USA Corp	Driveshafts	Automotive	Korea
Tennibot, LLC	Robotic tennis ball collectors	Tennis training	United States
Winkelmann Flowform Technology, LP	Metal components	Aerospace, defense, etc.	Germany
Yuseung America, LLC	Shipping pallets	Automotive	Korea

INDUSTRIAL DEVELOPMENT

Since 1994, Auburn Tech Parks South, North and West have created significant industrial growth. Today, the parks together are home to 28 multinational manufacturing firms.



AUBURN TECHNOLOGY PARK SOUTH

COMPANY	PRODUCT	MARKET	COUNTRY OF ORIGIN
Aptar CSP Technologies, Inc	Specialty plastics packaging	Medical, pharma, etc.	United States
Briggs & Stratton, LLC	Gasoline engines, generators	Lawn & garden	United States
Coachcomm, LLC	Wireless coaching headsets, etc.	Sports communication	United States
Donaldson Company, Inc	Emissions systems	Specialty off-road vehicles	United States
ID Plastics, LP	Plastic trays, packaging	Aerospace, logistics	Germany
I-PEX USA Manufacturing, Inc	Plastic connectors	Automotive	Japan
Korea Fuel Tech America, Inc	Plastics fuel systems	Automotive	Korea
Leehwa America, Inc	Plastic components	Automotive, logistics	Korea
Straehle + Hess USA, Inc	Textile components	Automotive	Germany



AUBURN TECHNOLOGY PARK NORTH

COMPANY	PRODUCT	MARKET	COUNTRY OF ORIGIN
Aptar CSP Technologies, Inc	Specialty plastics packaging	Medical, pharma, etc.	United States
ILJIN America Corp	Aluminum components	Automotive	Korea
KC Sol-Tech USA	Shipping racks	Industrial logistics	Korea
Lotte Chemical Alabama Corp	Long-fiber thermoplastics	Chemicals, industrial	Korea
Pyongsan America, Inc	Tube & Hose systems	Automotive	Korea
SCA, Inc	Plastic components	Automotive	Korea
YC Manufacturing, LP	Metal components	Construction	Korea



AUBURN TECHNOLOGY PARK WEST

COMPANY	PRODUCT	MARKET	COUNTRY OF ORIGIN
2A USA, Inc	Aluminum components	Automotive	Italy
Arkal Automotive USA, Inc	Thermoplastic components	Automotive	Israel
DK Dynamix, LLC	Automation solutions	Automotive, industrial	Korea
Donghee America, Inc	Plastic EV battery cases, etc.	Automotive	Korea
GE Aerospace	Jet engine components	Aerospace, defense	United States
INICS Battery Solutions Corp	EV battery components	Automotive	Korea
Innovative Tech, Inc	Sponges, filters	Automotive	Korea
Rausch & Pausch, LP	Solenoid valves	Automotive	Germany
Seohan Auto USA Corp	Front/rear axles	Automotive	Korea
Shinhwa Auto USA Corp	Driveshaft components	Automotive	Korea
SiO2 Medical Products, Inc	Plastics & glass labware	Medical, pharma	United States
Sodecia Safety & Mobility Auburn, Inc	Metal components	Automotive	Portugal

WORKFORCE

The workforce consists primarily of residents from Auburn, Opelika, and Lee County, and many workers commute from surrounding counties within a 1-hr drive.



LABOR AVAILABILITY - JULY 2025

LOCATION	CIVILIAN LABOR FORCE	EMPLOYMENT	UNEMPLOYMENT	UNEMPLOYMENT RATE
City of Auburn	40,537	39,228	1,309	3.2%
Lee County	90,144	87,503	2,641	2.9%
5-County Area *	155,959	151,071	4,888	3.1%

*Includes Lee County and surrounding counties of Chambers, Macon, Russell & Tallapoosa.

Labor.Alabama.gov

The City's Workforce Development Division partners with several state and local organizations to support employers and workers with staffing and training.

Alabama Industrial Development Training - AIDT AIDT.edu

Promotes economic development by providing job-specific training for Alabama's workforce.

Alabama Office of Apprenticeship ALApprentice.org

Apprenticeship programs providing quality career training for workers and employers.

Auburn Technology Network - ATN ATN.org

Assists local manufacturers increasing global competitiveness by providing a wealth of services.

Auburn Technical Assistance Center - ATAC AuburnTechnicalAssistanceCenter.com

Auburn University's affiliate helps companies grow through process improvement initiatives.

Auburn Training Connection - ATC

Partnership between the City of Auburn, Industrial Development Board, Auburn City Schools, Auburn University, and others created to manage job-specific training initiatives for job seekers and workers at local industries.

Opelika Career Center

Provides various resources and labor market information for both job seekers and employers.

Goodwill Career Center GoodwillSR.org/Opelika

Provides a range of resources for job seekers and employers from skills training to professional development.

Southern Union State Community College - SUSCC SUSCC.edu

Offers technical training as well as college prep classes and has an industry training center.

WorkInAuburn.com

HEALTHCARE

Healthcare options are plentiful in the Auburn-Opelika area with a major hospital, several established practices, two emergency care locations, several urgent care facilities, and new physicians continuing to relocate to the area.



East Alabama Health operates East Alabama Medical Center (EAMC) in Opelika, AL, Spencer Cancer Center (Opelika), Pinnacle Cardiovascular Associates (Opelika), and the Auburn Medical Pavilion (Auburn) next to the University's campus.



East Alabama Medical Center - EAMC

Recognized on Newsweek's 2025 list of Best-In-State hospitals. The award recognized the top hospitals at a state level, and EAMC was one of just 13 Alabama hospitals to be recognized. The hospital serves over 150,000 people annually in East Alabama, licensed for 314 general, acute care beds, and provides the following services:

- | | | | |
|----------------------------|---------------------------|----------------------------|------------------|
| ⇒ Cancer Care | ⇒ Infectious Disease | ⇒ Pain Management | ⇒ Senior Care |
| ⇒ Critical Care | ⇒ Laboratory Services | ⇒ Pediatric Care | ⇒ Sleep Medicine |
| ⇒ Diabetes & Endocrinology | ⇒ Maternity Care | ⇒ Pharmacy | ⇒ Surgery |
| ⇒ Emergency Care | ⇒ Maternal Fetal Medicine | ⇒ Preventative Health | ⇒ Women's Health |
| ⇒ Eye Care | ⇒ Mental Health Services | ⇒ Primary Care | ⇒ Wound Care |
| ⇒ Gastroenterology | ⇒ Neurology | ⇒ Pulmonology | |
| ⇒ Heart & Vascular Care | ⇒ Neonatal Intensive Care | ⇒ Rehabilitation & Therapy | |
| ⇒ HIV Care & Counseling | ⇒ Orthopedic Care | ⇒ Rheumatology Care | |

Auburn Medical Pavilion

Located in Auburn, AL, the three-story medical facility is home to services including: EAMC Freestanding Emergency Department, a retail pharmacy, Outpatient Imaging, East Alabama Ambulatory Surgery Center, and the Breast Health Center.

Auburn University Medical Clinic - AUMC

Provides medical services on a fee-for-service basis. EAMC has partnered with AUMC to provide professional medical services and management.

Pinnacle Cardiovascular Associates

Provides general cardiovascular and electrophysiology care as well as cardiac imaging services including ultrasound, cardiac CT, echo tests, nuclear medicine, and EKG.

Spencer Cancer Center

Provides oncology services, including radiation oncology, hematology, medical oncology, gynecologic oncology, and breast cancer care, in partnership with the Breast Health Center.

Center for Mental Health

The new freestanding facility will expand mental health services and is expected to open Fall 2025 in Opelika, AL.

EastAlabamaHealth.org

PARKS & RECREATION

Home to several top-notch parks, walking paths, bike paths and trails, the City continues its commitment to preserving green space as growth continues to ensure the next generation's enjoyment of City parks for years to come.



CITY PARKS

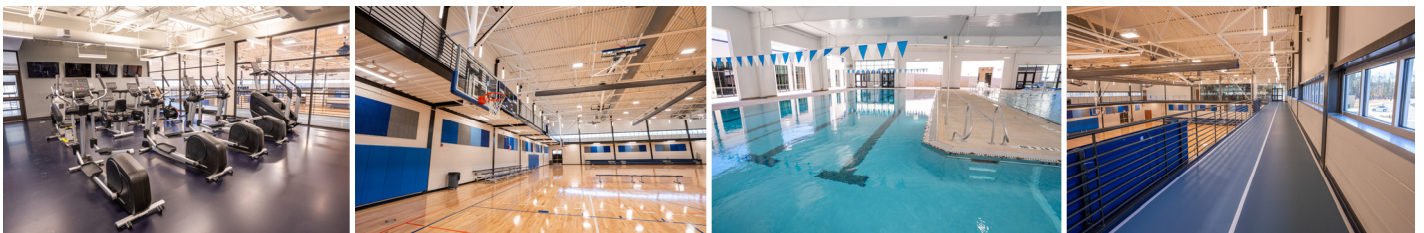
Dinius Park	Kiesel Park	Sam Harris Park
Felton Little Park	Martin Luther King Park	Auburn/Opelika Skate Park
Hickory Dickory Park	Moore's Mill Park	Town Creek Park & Playground

In addition to operating City parks, the Parks & Recreation department operates all public athletic facilities and recreation centers which offer arts, aquatics, baseball, basketball, fitness, football, pickleball, racquetball, senior activities, soccer, softball, tennis, etc.



ATHLETIC FACILITIES

Auburn Softball Complex	Duck Samford Park - Fields 4-7	Samford Pool
Auburn Soccer Field	Duck Samford Park - Fields 8-10	Wire Road Soccer Complex
Duck Samford Park - Fields 1-3	Samford Pickleball & Tennis Courts	Yarbrough Tennis Center



COMMUNITY & RECREATION CENTERS

Boykin Community Center	Frank Brown Recreation Center	Lake Wilmore Park Recreation Center
Dean Road Recreation Center	Hubert & Grace Harris Senior Center	Jan Dempsey Community Arts Center

AuburnAL.gov/Parks

PARKS & RECREATION

Other opportunities for outdoors and nature experiences are available for Auburn residents to enjoy with the city being home to Chewacla State Park as well as the Auburn University Arboretum and the Kreher Preserve and Nature Center.



Chewacla State Park

The State Park's 696 scenic acres are located in south Auburn offering plenty of rest, relaxation and recreation. The facilities include a 26-acre lake, swimming area, waterfall, playground, a modern campground, picnic areas with tables, grills and shelters, cabins, hiking and mountain biking trails.



AlaPark.com/Parks/Chewacla-State-Park



Donald E. Davis Arboretum

The 13.5 acre botanic garden facility is located near downtown Auburn on the campus of Auburn University. Supported by Auburn University's College of Sciences and Mathematics, the Arboretum provides visitors with a place to enjoy a natural setting and experience the native plants and habitats of Alabama.

Auburn.edu/COSAM/Arboretum



Kreher Preserve & Nature Center

First-class discovery and nature center with programs offered throughout the year including nature-based programs such as: Discovery Hikes, Nature Walks, School Programs, Youth Camps, Adult Workshops and Classes, Educational Exhibits, and Wildlife Studies.

KPNC.Auburn.edu

Several attractions outside of Auburn are also available within 25 miles for Auburn residents to enjoy including the popular Lake Martin.

Lake Martin LakeMartin.com

One of the largest man made lakes in the United States, Lake Martin is a popular recreation area for swimming, boating, fishing, water skiing, camping, and golfing. The Dixie Sailing Club operates on Lake Martin. Lake Martin hosts many events throughout the year, including fishing tournaments, a fireworks show on the Fourth of July, and the Alexander City Jazz Festival, an annual event every June in downtown Alexander City and at the Lake Martin Amphitheatre.

Lee County Lake

Located 9 miles east of Auburn, offers 130 acres of fishing for the public to enjoy.

Tuskegee National Forest

Offers camping facilities, biking and hiking trails, horseback riding, a shooting range, and wildlife viewing areas.

PARKS & RECREATION

Auburn is one of only two cities in the state to be named as a Bicycle Friendly Community by the League of American Bicyclists with over 40 miles of bike lanes, paths, and trails.



Area residents are fortunate to have public and private golf course options including the world renowned Robert Trent Jones Golf Trail, one of the top golf destinations in the U.S. The area has been rated by Golf Digest as the #1 metro for golf.



Robert Trent Jones Golf Trail at Grand National RTJGolf.com/GrandNational

Voted the #1 public golf facility in America by the readers of Golf World, Robert Trent Jones, Sr. is on record saying that Grand National was the single greatest natural site for golf he had ever seen. Located in Opelika, AL, Grand National is built on 600-acre Lake Saugahatchee offering two 18-hole courses and one par 3 course.

Pines Crossing Golf Course PinesCrossing.com

Formerly known as Indian Pines, the 18-hole public golf course in east Auburn operates as the municipal course for Auburn and Opelika. The par 72 measuring 7,031 yards recently underwent significant renovations.

Auburn University Club AUGolfClub.com

Private golf club in northwest Auburn just a few minutes from downtown and Auburn University's main campus. Home to the Auburn University golf teams, the 18-hole championship golf course consists of 7,326 yards.

Moore's Mill Club MooresMillClub.com

Private golf club in Auburn only a few miles southeast of downtown includes an 18-hole golf course on rolling terrain through dense hardwoods.

Saugahatchee Country Club SaugahatcheeCountryClub.com

One of the oldest private clubs in east Alabama offers an 18-hole, par 72 golf course of 7,040 yards and ranks among the top five in the state by Golf Digest. Saugahatchee Country Club is located in nearby Opelika, AL.

CULTURAL ARTS

The City's Jan Dempsey Community Arts Center is the cultural community resource for creativity and education in the visual and performing arts.



Jan Dempsey Community Arts Center - JDCAC

The JDCAC offers several opportunities to experience visual and performing arts, entertain innovative ideas, develop new talents and experience culture in partnership with the Auburn Arts Association, Auburn Area Community Theatre, and Auburn Community Orchestra. JDCAC programs include:

- ⇒ Art Gallery
- ⇒ Dance
- ⇒ Summer Camps
- ⇒ Ceramics Studio
- ⇒ Music
- ⇒ Art for Homeschoolers
- ⇒ Visual Arts
- ⇒ Theatre
- ⇒ Special Interests

AuburnAL.gov/Parks/Facilities

Auburn University plays a significant role in providing cultural arts experiences, education, and entertainment for Auburn University students and faculty along with area residents.

Gouge Performing Arts Center - GPAC

The Jay & Susie Gouge Performing Arts Center at AU includes a 1,200-seat performance hall and an outdoor amphitheater provides a second venue for performances. The shows range from concerts featuring Grammy Award-winning artists, and world-renowned musicians to popular Broadway productions.

GougeCenter.Auburn.edu



The Jule Museum at Auburn University

The teaching art museum for Auburn University advances research, outreach and instruction through its collections and programs in active and welcoming learning environments. The museum is housed in a striking modernist building that features changing exhibition galleries, a café, a store, extensive grounds and landscaped walking paths dotted with sculpture.

JCSM.Auburn.edu

Telfair B. Peet Theatre CLA.Auburn.edu/Theatre

Hosts classical and modern productions year-round seating nearly 350 on Auburn University's campus, home to the Department of Theatre and Dance.

Theatre and museums are also available nearby within a 1-hour drive including one of the largest Shakespeare festivals worldwide.

Alabama Shakespeare Festival ASF.net

Located in Montgomery, AL, only a 1-hour drive away, is the largest professional theatre in Alabama and has been a leader in performing arts around the state and nation.

Columbus Museum ColumbusMuseum.com

One of the largest museums in the Southeast in nearby Columbus, GA, is unique for its dual concentration on American art and regional history.

EVENTS

The City's Parks & Recreation department organizes nearly 60 events each year.



PARKS & RECREATION CALENDAR OF EVENTS 2025

EVENT	DATE(S)	EVENT	DATE(S)
Polar Plunge	Jan 18	City Market	Jun 7, 14, 21, 28
Daddy Daughter Date Night	Feb 7-8	Float-In-Movie	Jun 7
Day in Clay	Mar 1	Family Splash	Jun 14
Spring Break Camp	Mar 10-14	Independence Day Celebration	Jul 4
Empty Bowls	Mar 21	City Market	Jul 5, 12, 19, 26
Active Auburn Tails & Trails Fun Run	Mar 22	Float-In-Movie	Jul 12
Bark in the Park	Mar 22	Itty Bitty Scavenger Hunt Begins	Aug 1
Breakfast with the Bunny	Apr 5	Float-In-Movie	Aug 2
Eggcellent Easter Scavenger Hunt	Apr 12-16	City Market	Aug 2, 9, 16, 23, 30
Cops On Top	Apr 18	Dawg Days of Summer Pool Party	Sep 20
Easter Egg Hunt	Apr 19	Fall Sundown Concert	Sep 25; Oct 2, 9, 16
CityFest Art Show/Preview Reception	Apr 24	Downtown Trick or Treat	Oct 31
CityFest	Apr 26	Letters to Santa Begins	Nov 17
Spring Sundown Concert	May 1, 8, 15, 22, 29	Holiday Art Sale	Nov 22
Fishing Rodeo	May 3	Jingle Jog	Dec 6
Kids Splash and Dash	May 10	Ho, Ho, Ho Hike & Holiday Celebration	Dec 6
Opening Day of Samford Pool	May 21	Holly Jolly Shop & Drop	Dec 13
City Market	May 24, 31	The Holiday Wrap Up	Dec 15-23
SummerNight Downtown Art Walk	Jun 6	Winter Break Camp	Dec 29-31

Many other events are hosted annually year-round by Auburn University, the Auburn Chamber of Commerce, the Downtown Merchants and others in the area.

Mardi Gras Parade & Krewe Krawl

The Mardi Gras experience comes to downtown Auburn each year in February.

Spring Boogie

The funky music festival is held twice a year at Standard Deluxe in nearby Waverly, AL.

Cheers On The Corner

Downtown Auburn restaurants offer sips and bites annually in July at Toomer's Corner.

Auburn University Football Fan Day

Football fans have a chance to interact with players, coaches, and the beloved mascot "Aubie" each year in August.

Auburn Oktoberfest

Annual festival held at Ag Heritage Park in October featuring some of the nation's best breweries.

Syrup Sopping Day

Nearby Loachapoka, AL hosts about 10,000 visitors in October at Pioneer Park to relive the late 1800s - early 1900s.

Hey Day Holiday

Festivities from November to January with ice skating and more at downtown's Hey Day Market.

Downtown Auburn Christmas Parade

Celebration of Christmas in downtown Auburn in early December.

MUNICIPAL



Incorporated in 1839, the City of Auburn continues to receive very high levels of satisfaction in City services, quality of life, and overall value received for Auburn resident's tax dollars in Citizen Surveys exceeding the national average.



Council - Manager Government

The City of Auburn's form of government, led by the City Council, Mayor, and City Manager.

City Council

Eight members elected from eight wards and the Mayor elected in City at-large. Each member serves a four-year term. The City Council acts as a legislative body of the City, passing laws and regulations, and appointing citizens to various boards and commissions.

City Manager

Appointed by the City Council, acts as the City's Chief Administrative Officer, responsible for the overall operations of day-to-day public services and city government.

Mayor

Conducts City Council meetings and is a voting member of City Council. The Mayor serves as the primary contact for the Governor of the State of Alabama.

**The City is organized into four business units comprised of 19 departments.
The structure was created to develop an innovative, efficient, and accountable organization that will meet the demands of a rapidly growing city.**

ADMINISTRATIVE SERVICES

Office of the City Manager	Finance	Information Technology
Economic Development	Human Resources	Judicial

PUBLIC SAFETY SERVICES

Public Safety Admin.	
Fire Dept.	Police Dept.

DEVELOPMENT SERVICES

Development Services Admin.	Community Services	Engineering Services	Inspection Services	Planning Services
-----------------------------	--------------------	----------------------	---------------------	-------------------

PUBLIC SERVICES

Auburn Public Library	Environmental Services	Parks & Recreation	Public Works	Water Resource Management
-----------------------	------------------------	--------------------	--------------	---------------------------

AuburnAL.gov

TAXES & INCENTIVES

Sales Tax

9% (State of Alabama 4%; City of Auburn 4%; Lee County 1%)

Occupational License Fee

1% of gross income per year of each person employed in the Auburn city limits.

Business License Fee

Levied based on gross receipts of any businesses conducting business in the Auburn city limits.

Business Privilege Tax

Applies to any corporations conducting business in the State of Alabama.

Corporate Income Tax

Levied based on corporation's net taxable income from business conducted in the State of Alabama.

Property Tax

Classified and assessed at 20% of fair market value for non-exempt business property in the State of Alabama.

PROPERTY TAX RATES - ACTUAL RATIO OF ASSESSMENT					
LOCATION	CITY - 26 MILS	COUNTY - 14.5 MILS	SCHOOLS - 3 MILS	STATE - 6.5 MILS	OTHER - 4 MILS*
Residential **	10%	10%	10%	10%	10%
Industrial Real	20%	20%	20%	20%	20%
Industrial Personal	2.0%	2.0%	2.0%	2.0%	2.0%
Machinery & Equipment	2.0%	2.0%	2.0%	2.0%	2.0%
Raw Materials Inventory	n/a	n/a	n/a	n/a	n/a
Goods-in-Process Inventory	n/a	n/a	n/a	n/a	n/a
Finished Goods Inventory	n/a	n/a	n/a	n/a	n/a

*Hospital Tax - 2.5 mils; Lee County Dependent Children - 1.5 mils **With Homestead Exemption (Without Homestead - 20%)

Property/Sales & Use Tax Abatements

The City will consider abatements for qualified new and expanding industries for non-educational taxes on equipment and building for a period of up to 10 years.

Jobs Credit

Annual refund for companies of up to 3% of the previous year's gross payroll for up to 10 years; an additional .5% credit for veteran's wages is available if companies employ at least 12% veterans.

Investment Credit

Available for up to 1.5% of the qualified capital investment expenses for up to 10 years.

Corporate Income Tax Credits & Deductions

Available for qualifying State of Alabama corporate taxpayers.

Industrial Development Grant Program

State grant to pay for site preparation costs for property owned by public corporations including municipalities, industrial development boards, etc.

Industrial Revenue Bonds

Used as long-term financing for up to 100% of a project for land acquisition, buildings, site prep/improvements, building construction, furnishings, fixtures and equipment, and soft costs.

Section 108 Loans

The City offers a micro-loan and economic development loan for eligible projects.