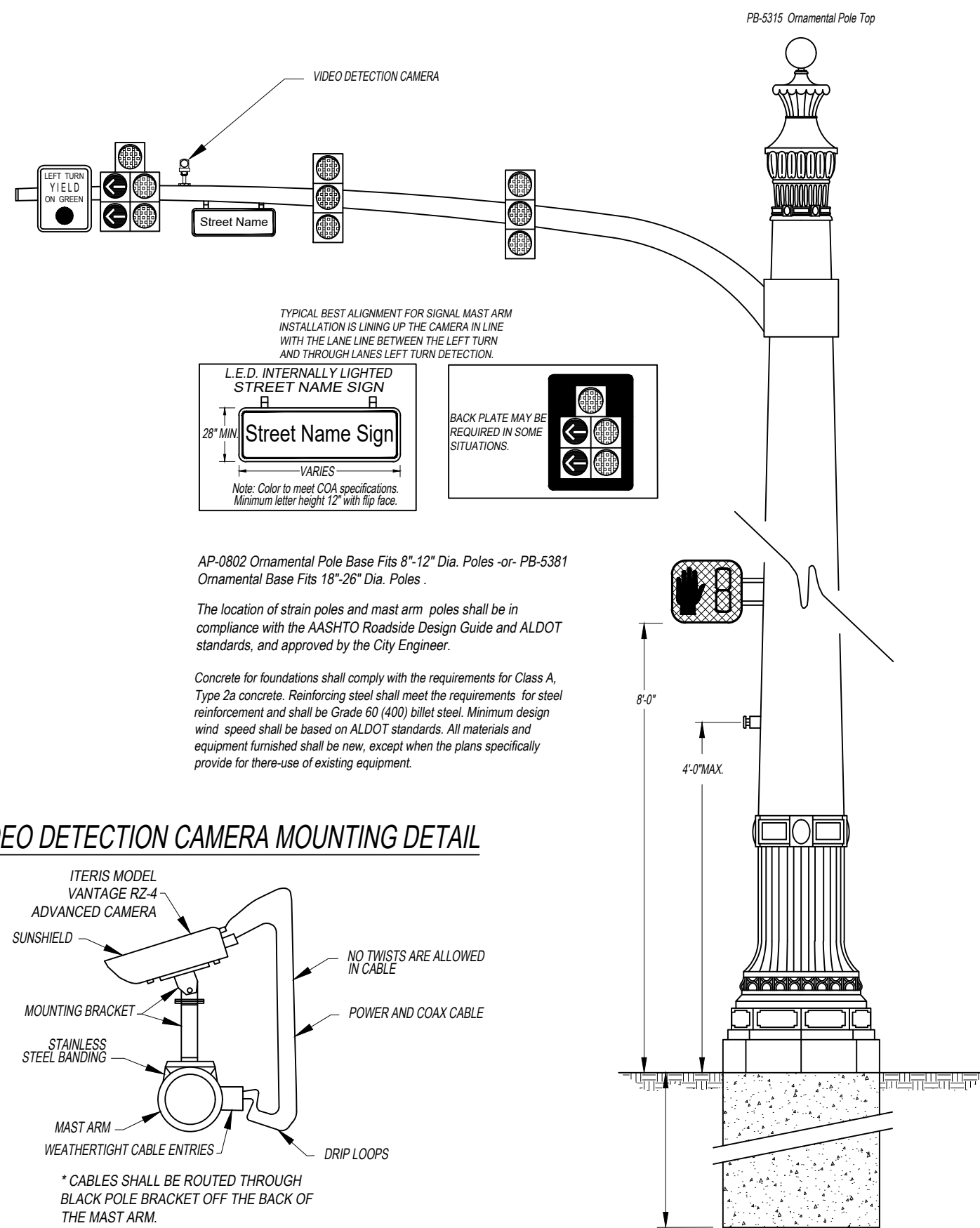
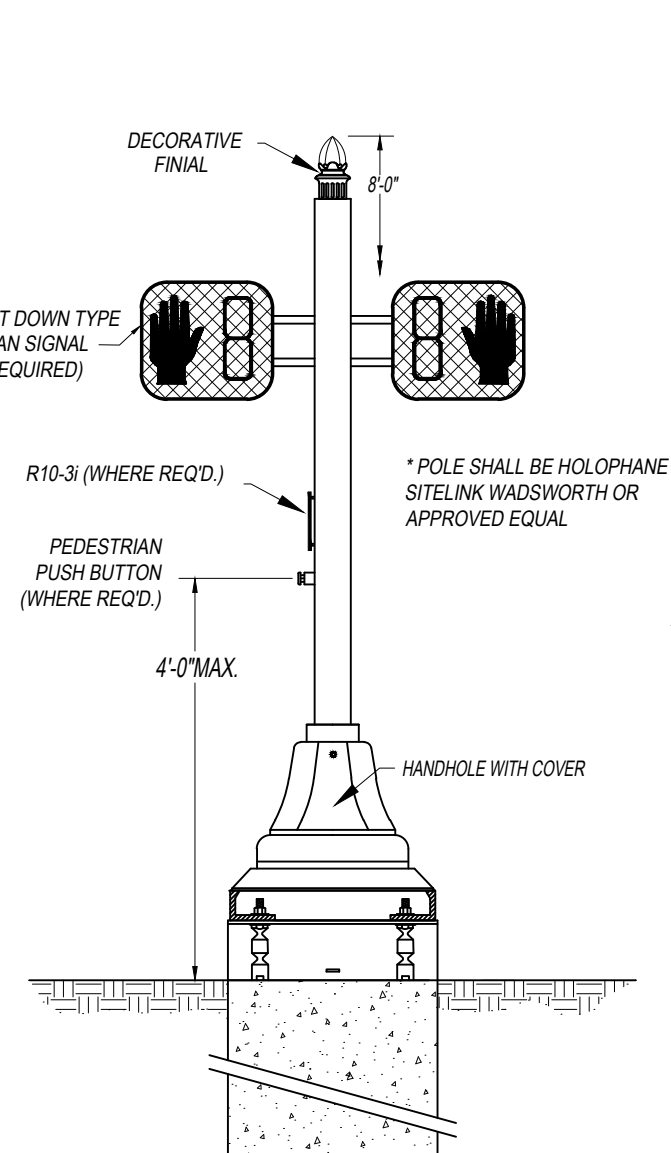


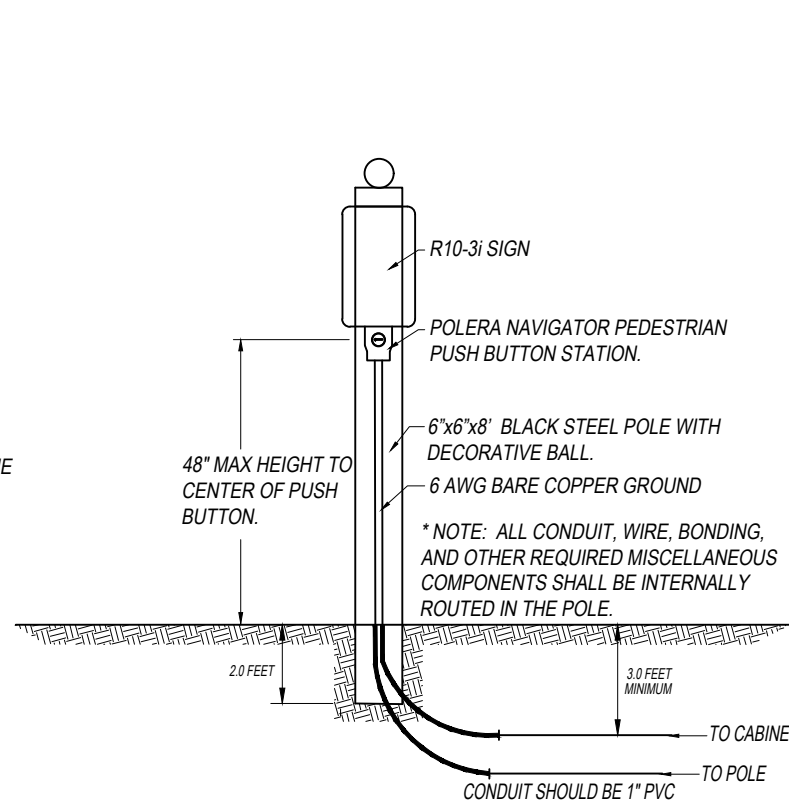
DECORATIVE MAST ARM DETAILS



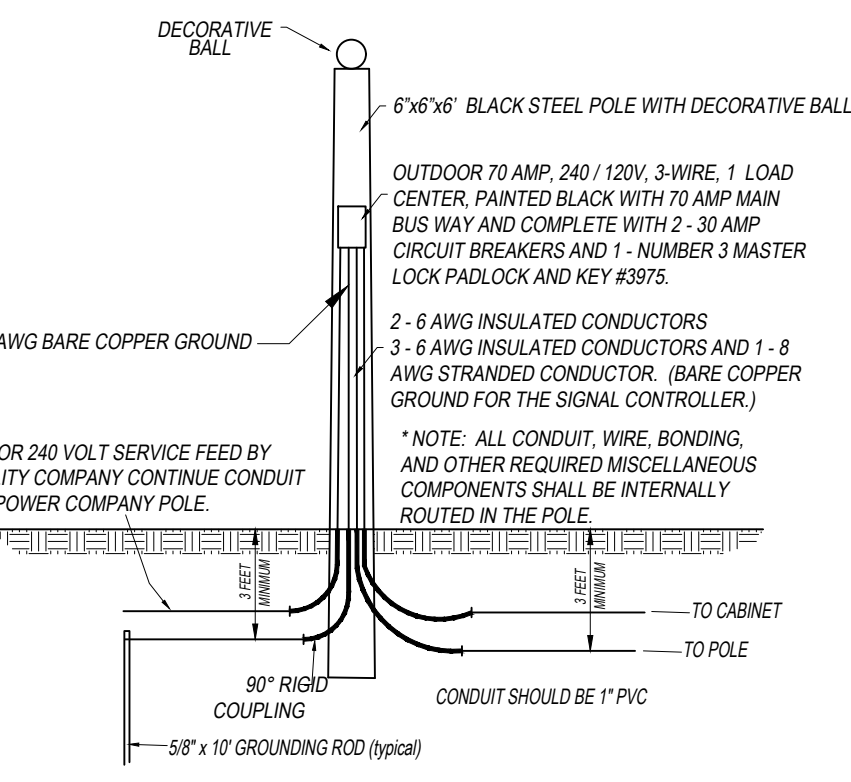
PEDESTRIAN POLE INSTALLATION DETAIL



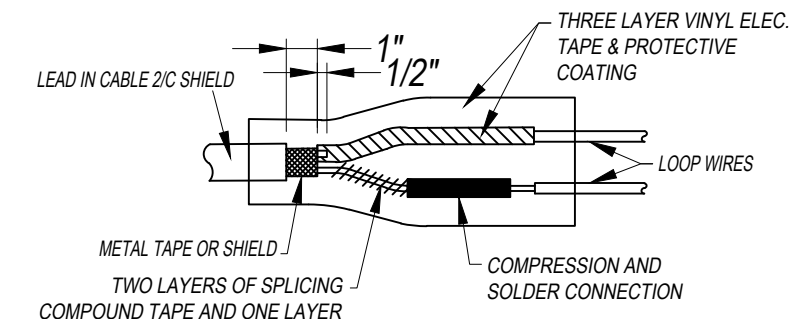
PEDESTRIAN PUSH BUTTON DETAIL



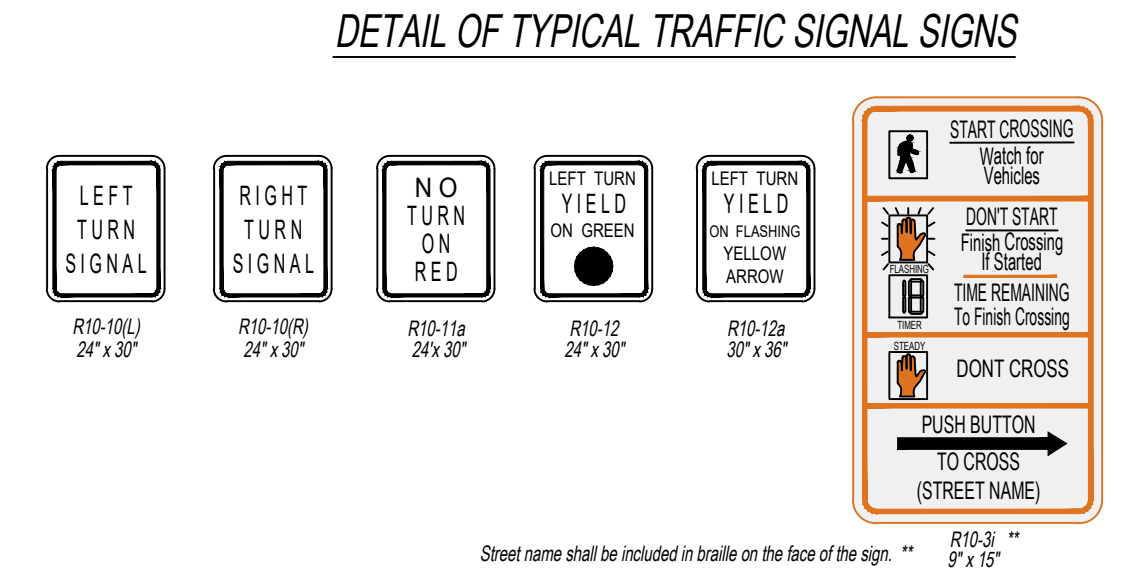
UNDERGROUND POWER SOURCE FOR COMBINATION TRAFFIC SIGNAL AND STREET LIGHTING POLES



LOOP SPlicing DETAIL



TYPICAL TRAFFIC SIGNAL SIGNS AND HEADS



DETAIL OF TYPICAL TRAFFIC SIGNAL SIGNS

TYPE 1	TYPE 2	TYPE 3	TYPE 4	TYPE 5	TYPE 6	TYPE 7	TYPE 8	TYPE 9
R Y G	R Y G	R Y G	R Y G	R Y G	R Y G	R Y G	R Y G	R Y G

DETAIL OF TYPICAL TRAFFIC SIGNAL HEADS

TYPE 1	TYPE 2	TYPE 3	TYPE 4	TYPE 5	TYPE 6	TYPE 7	TYPE 8	TYPE 9
R Y G	R Y G	R Y G	R Y G	R Y G	R Y G	R Y G	R Y G	R Y G

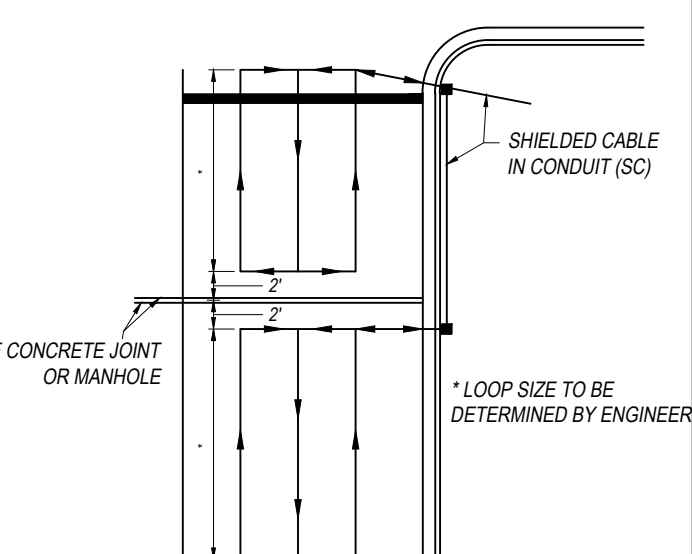
LARGE LOOP DETECTOR INSTALLATION DETAIL

LANE WIDTH	7'4"	9'	12'
10'	2'5"	2'5"	5'
11'	2'5"	2'	6'
12'	2'	2'	6'
14'	2'	4'	6'

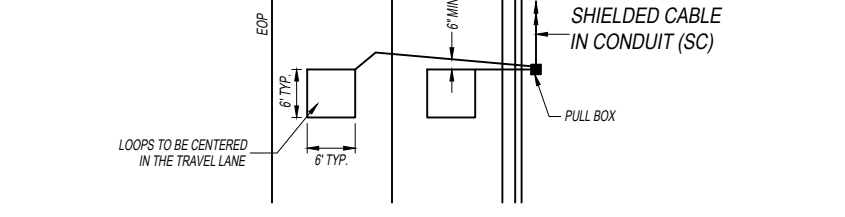
MINIMUM LOOP SEPARATION WHEN NO LANE LINES ARE PRESENT IS 2'

ALL LOOPS ARE 40' IN LENGTH UNLESS OTHERWISE SPECIFIED.

TYPICAL DETAIL OF LOOP DETECTOR WHERE TRANSVERSE CONCRETE JOINTS, MANHOLES ETC. ARE ENCOUNTERED

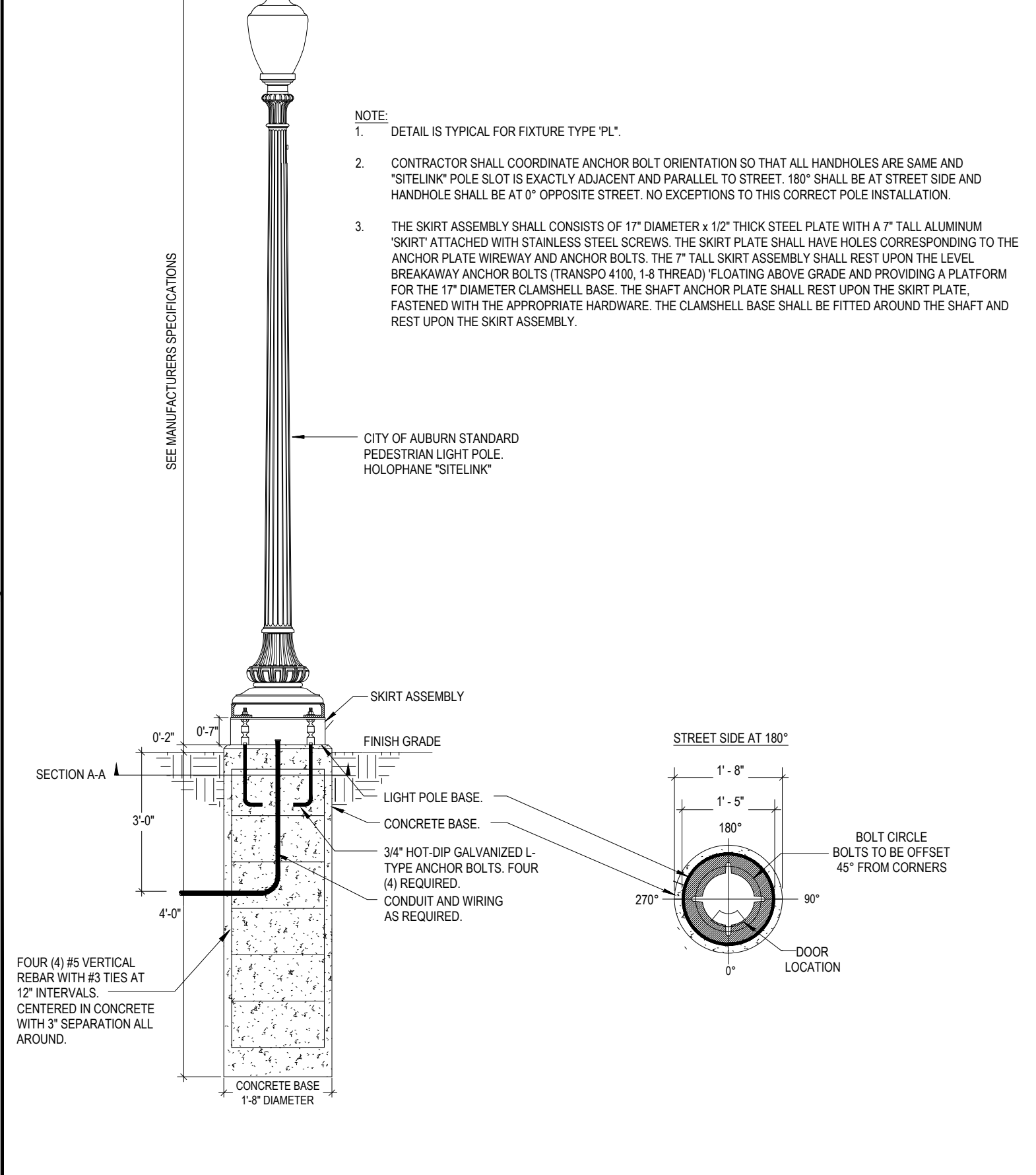


SMALL LOOP DETECTOR INSTALLATION DETAIL

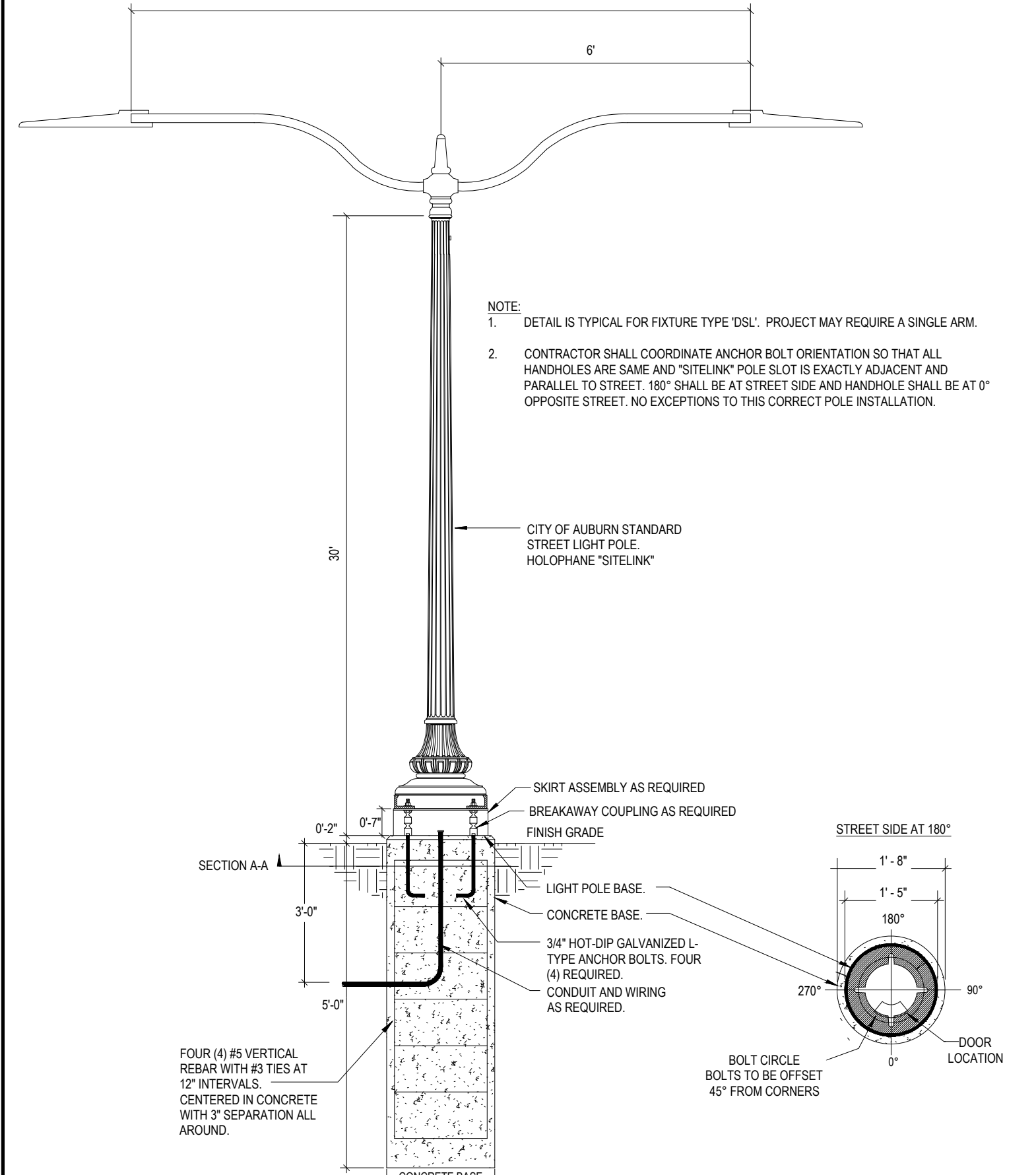


NOTE: NO LOOPS ARE TO BE INSTALLED THROUGH, OVER, OR UNDER TRANSVERSE CONCRETE JOINTS IN CONCRETE PAVEMENT, AND NO MANHOLES, INLETS, ETC. MAY BE LOCATED WITHIN A LOOP. IF ANY OF THE ABOVE ARE ENCOUNTERED THE LOCATION OF THE LOOP MAY BE VARIED SLIGHTLY AS DIRECTED BY THE ENGINEER. IF THE ABOVE ITEMS ARE UNAVOIDABLE, SMALLER LOOPS AS SHOWN TO THE RIGHT MAY BE USED. SMALLER LOOPS USED TO REPLACE ONE LARGE LOOP MAY BE CONNECTED TO ONE CHANNEL.

TYPICAL PEDESTRIAN LIGHT POLE DETAIL



TYPICAL STREET LIGHT POLE DETAIL



TYPICAL LIGHT POLE SPECIFICATION

- DEVELOPER REQUIREMENTS
- THE DEVELOPER WILL BE RESPONSIBLE FOR THE INDIVIDUAL DESIGNS OF EACH ENCLOSURE AREA OR INCORPORATING LIGHTING INTO THE EXISTING ENCLOSURE AREA DESIGNS.
 - REFER TO SECTION 5.6 "STREET LIGHTING IN THE CITY OF AUBURN ENGINEERING DESIGN AND CONSTRUCTION MANUAL FOR FULL REQUIREMENTS.
 - PROVISIONS FOR FUTURE FIXTURES LOCATIONS ASSIGNED TO THE ENCLOSURE MUST BE ACCOMMODATED IN THE ELECTRICAL DESIGN. THIS MAY INCLUDE BUT NOT LIMITED TO, INCREASED CONDUIT SIZE, SPARE CONDUIT, INCREASE WIRE SIZE, SPARE WIRE, JUNCTION BOXES, WIRE LABELS AT ALL JUNCTIONS, STUB OUTS, AND OTHER MISCELLANEOUS ACCOMMODATIONS.
 - DEVELOPER MUST CONFIRM IF ANY OF MASTER PLAN WORK HAS BEEN DONE AT HIS SPECIFIC LOCATION. VERIFY IF PANEL ENCLOSURE HAS BEEN INSTALLED AND ANY POLE LIGHTS THAT MAY BE IN PLACE. COORDINATE ALL NEW ELECTRICAL WORK WITH OWNER REPRESENTATIVE.

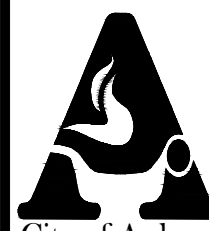
PEDESTRIAN LIGHTING FIXTURE SCHEDULE

SYMBOL	MANUFACTURER & CATALOG NUMBER	LAMP	WATTS	MOUNTING	VOLTS	REMARKS
PL ⊕	HOLOPHANE GV03-PB04K-MVOLT-SPL-GL3-BK (LIGHT FIXTURE) WDA-12-SL4-17D-C03-BWKT-BK-ABG (POLE)	LED 4000K	60	POLE	120	DECORATIVE LED LUMINAIRE WITH CAST ALUMINUM HOUSING (BLACK FINISH); BOROSILICATE GLASS REFRACTOR, TYPE 3 DISTRIBUTION; INTEGRAL, 400 MILLI AMP LED DRIVER, MOUNT FIXTURE ON 12' STRAIGHT ALUMINUM, STEELINK POLE.
PB ⊕	HOLOPHANE GV03-PB04K-MVOLT-SPL-GL3-BK (LIGHT FIXTURE) WDA-12-SL4-17D-C03-BWKT-BK-ABG (POLE) FTH-80 FLAG POLE HOLDER	LED 4000K	60	POLE	120	DECORATIVE LED LUMINAIRE WITH CAST ALUMINUM HOUSING (BRONZE FINISH); BOROSILICATE GLASS REFRACTOR, TYPE 3 DISTRIBUTION; INTEGRAL, 400 MILLI AMP LED DRIVER, MOUNT FIXTURE ON 12' CLASSIC TAPERED AND FLUTED ALUMINUM POLE WITH BRONZE FINISH, WITH RECEPTACLE INSIDE HANDHOLE AND ONE NEAR TOP OF POLE FLAG POLE HOLDER AT 90° A.F.G.
PLR ⊕	HOLOPHANE GV03-PB04K-MVOLT-SPL-GL3-BK (LIGHT FIXTURE) WDA-12-SL4-17D-C03-BWKT-BK-FOR-R132 (POLE)	LED 4000K	60	POLE	120	DECORATIVE LED LUMINAIRE WITH CAST ALUMINUM HOUSING (BLACK FINISH); BOROSILICATE GLASS REFRACTOR, TYPE 3 DISTRIBUTION; INTEGRAL, 400 MILLI AMP LED DRIVER, MOUNT FIXTURE ON 12' STRAIGHT ALUMINUM, STEELINK POLE WITH RECEPTACLE INSIDE HANDHOLE AND ONE AT 11'-0" ABOVE BOTTOM OF POLE.

STREET LIGHTING FIXTURE SCHEDULE

SYMBOL	MANUFACTURER & CATALOG NUMBER	LAMP	WATTS	MOUNTING	VOLTS	REMARKS
DSL	HOLOPHANE ATB0-P304-MVOLT-R3-BK-P7 (LIGHT FIXTURE, (2)) WDA-30-SL4-17D-C03-BK-RP12A-BK-12N-2A-TA-SL-BK-FGSL-BK-BWKT-17TOR-1208C-100AB-TRANSPO-48-RPD325829 (POLE (1) & ROADWAY ARM (2))	LED 4000K	124	POLE	120	*AUTOBAY® LED LUMINAIRE (2@180°) WITH CAST ALUMINUM HOUSING, BLACK FINISH, TYPE II DISTRIBUTION, INTEGRAL LED DRIVER, 30° DECORATIVE POLE & BASE, RECEPTACLE INSIDE HANDHOLE AND TOP OF POLE. 6' ROADWAY ARM (2).

STANDARD DETAILS: TRAFFIC - SHEET 1 of 3

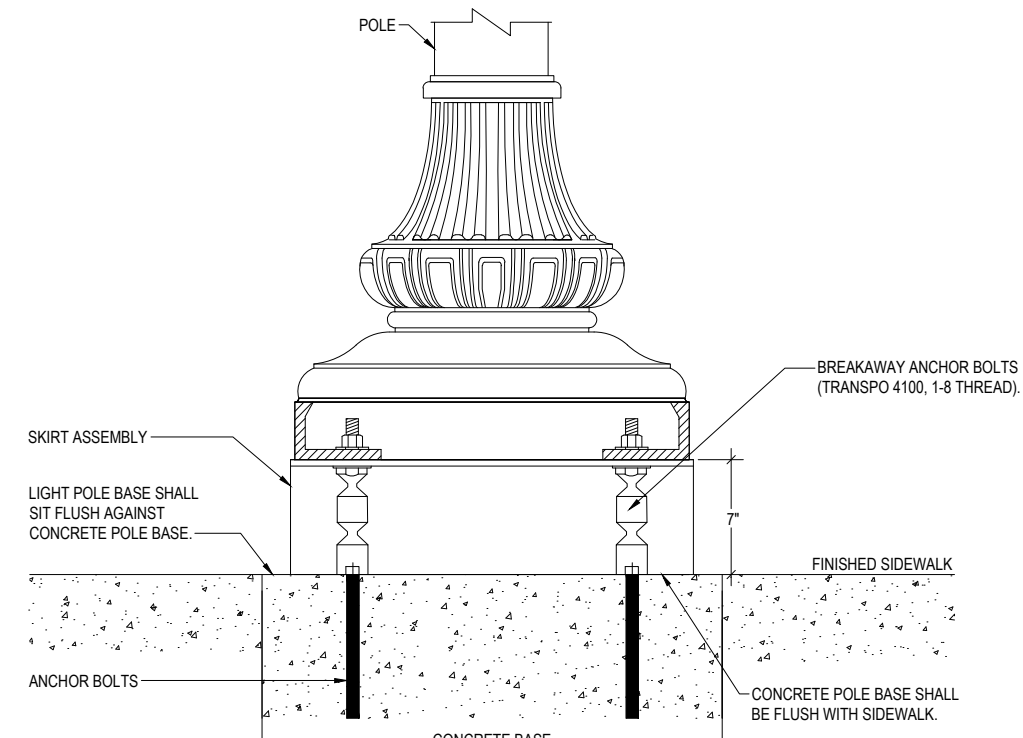
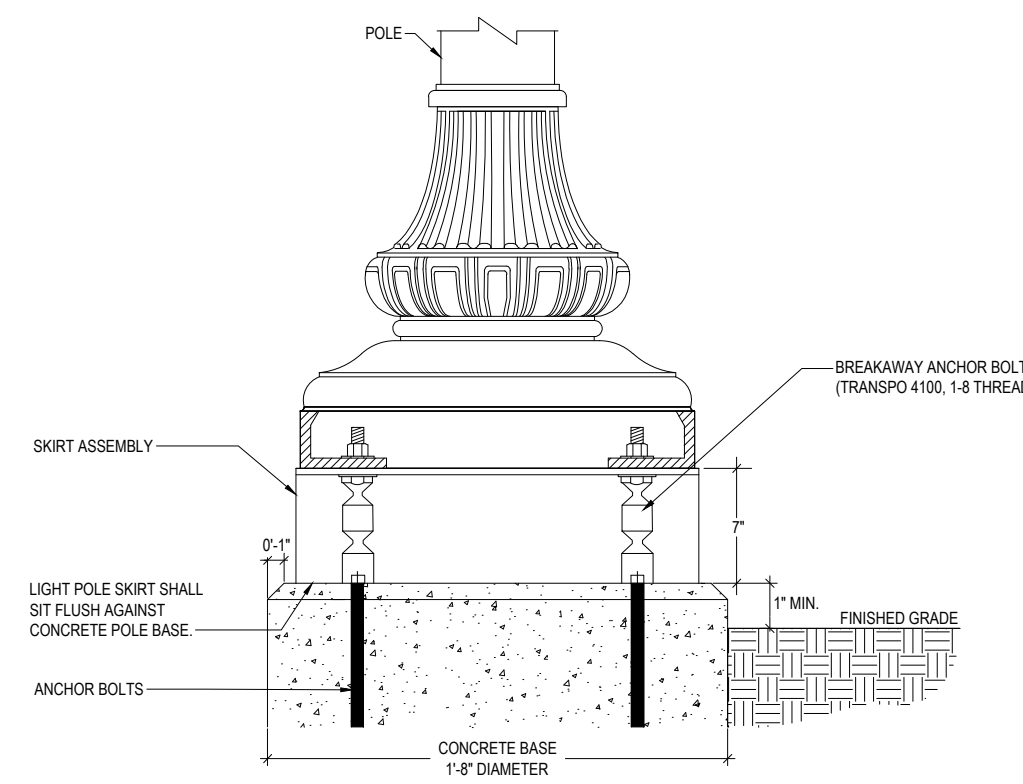


DEPARTMENT:	ENGINEERING SERVICES	REVISIONS:
SCALE:	N.T.S.	
DRAWN BY:	GINA MCCRICKARD	
CITY ENGINEER:	ALISON FRAZIER	
APP'D. BY:	ALISON FRAZIER	
IMPLEMENTED:	01-01-2022	

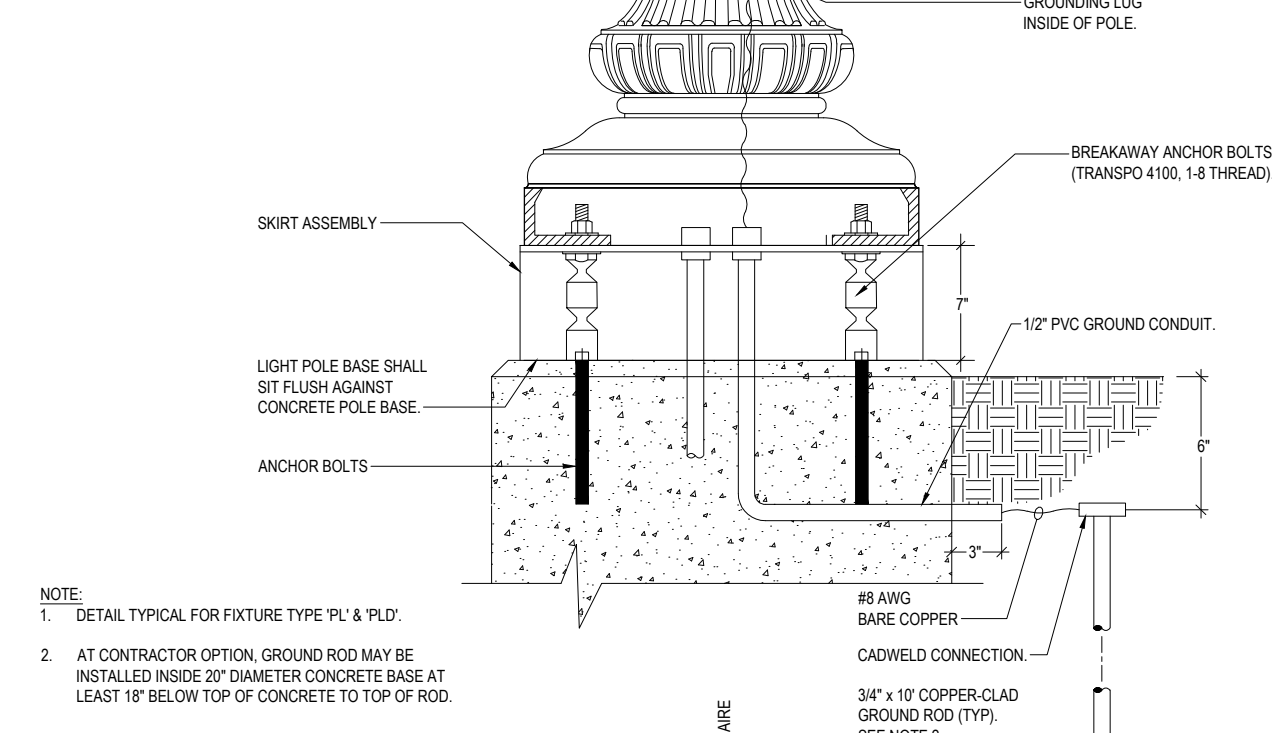
EFFECTIVE DATE:

2024

POLE BASE DETAIL

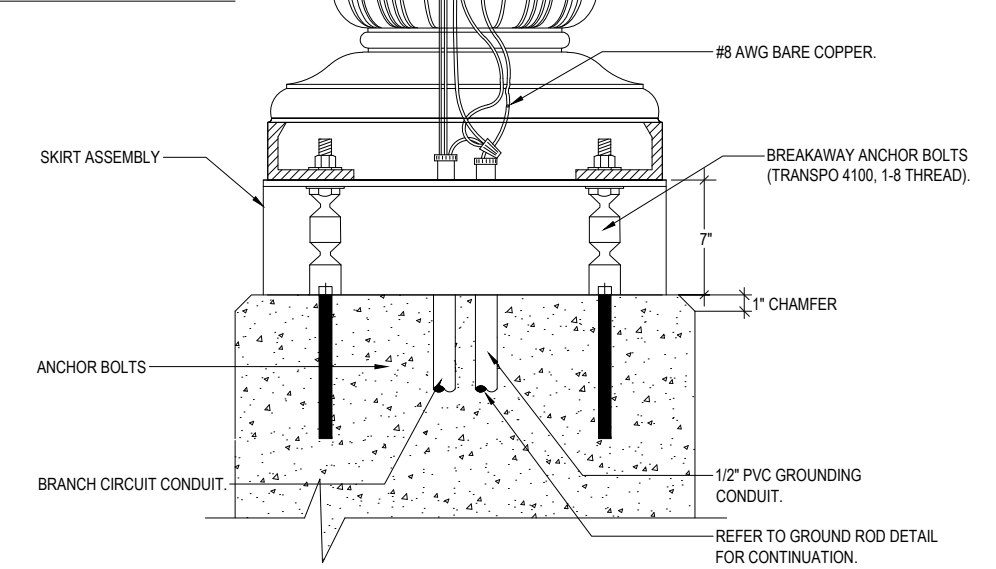
POLEBASE INSTALLED ON SIDEWALK
ENLARGED TYPICAL POLEBASE DETAILPOLEBASE INSTALLED ON GRADE
ENLARGED TYPICAL POLEBASE DETAIL

GROUND ROD DETAIL



NOTE:
1. DETAIL TYPICAL FOR FIXTURE TYPE 'PL' & 'PLD'.
2. AT CONTRACTOR OPTION, GROUND ROD MAY BE INSTALLED INSIDE 20\"/>

POLE HANDHOLE DETAIL



NOTE:
1. DETAIL TYPICAL FOR FIXTURE TYPE AS REQUIRED.

ENCLOSURE NOTES

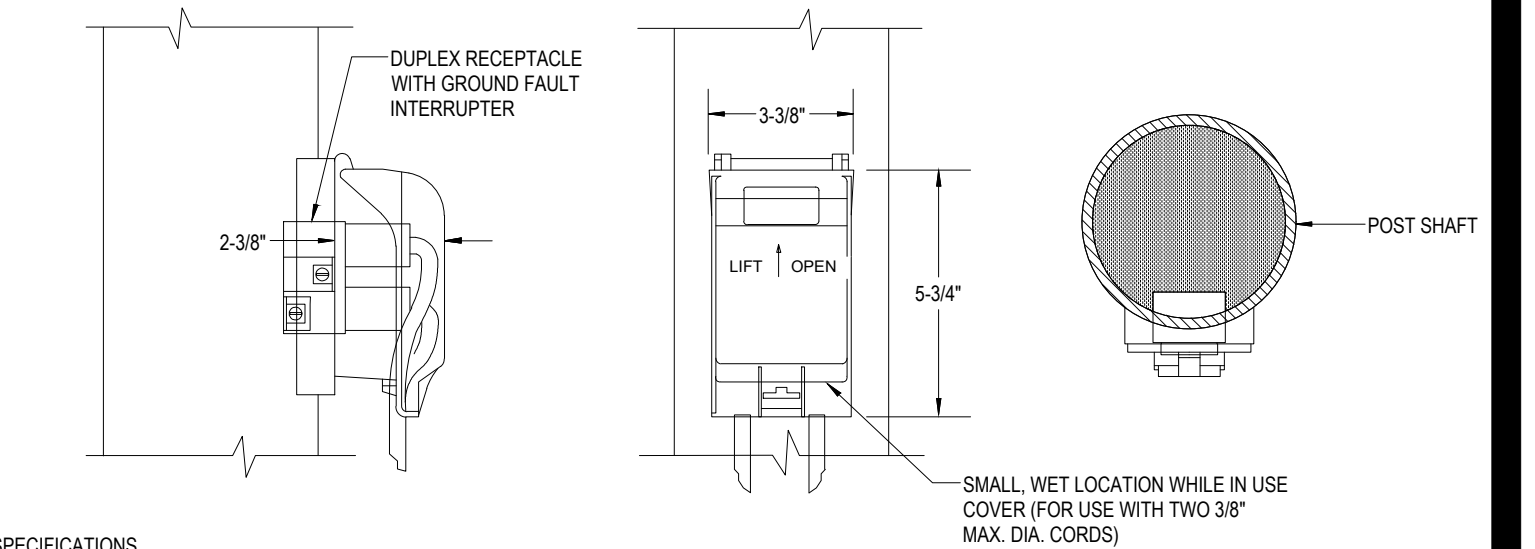
- ENCLOSURE SHALL BE FREESTANDING ON CONCRETE PAD, RAINFOOT-NEMA 3R, STEEL (G90), PAINTED BLACK (RAL 9017), HINGED LOCKABLE OUTSIDE DOOR, HINGED DEAD-FRONT INSIDE COVER. ALL INTERNAL WIRING AND CONNECTIONS SHALL BE BY MANUFACTURER. MUST BE UL "SERVICE ENTRANCE" RATED. SIZE AS REQUIRED. ALL CIRCUIT BREAKERS (MAIN & BRANCH) AND H-O-A SWITCH SHALL BE ACCESSIBLE INSIDE ENCLOSURE WITH DEAD-FRONT COVER CLOSED. MILBANK OR APPROVED EQUIVALENT.
- CONTACTOR SHALL BE 100 AMP 2 POLE, ELECTRICALLY HELD WITH 120 VOLT COIL, OPEN TYPE. THIS CONTACTOR SHALL CONTROL "ON-OFF" OF ALL CIRCUITS IN PANEL 'SL'.
- HAND-OFF-AUTO (H-O-A) SWITCH SHALL BE 120 VOLT 20 AMP RATED AND SHALL OPERATE AS FOLLOWS:
"HAND": CONTACTOR IS CLOSED AND PANEL 'SL' IS ENERGIZED.
"OFF": CONTACTOR IS OPEN AND PANEL 'SL' IS DEENERGIZED.
"AUTO": PHOTOCELL CONTROLS CONTACTOR AND "ON-OFF" OF PANEL 'SL'.
- PHOTOCELL SHALL BE SPST 120 VOLT TO CONTROL CONTACTOR AND "ON-OFF" OF PANEL 'SL'. PHOTOCELL SHALL BE MOUNTED INSIDE OF ENCLOSURE WITH GLASS WINDOW TO DETECT OUTSIDE LIGHT.
- CIRCUIT BREAKER (SIZE AS NOTED), SEPARATE OPEN TYPE, 10K AIC, ACCESSIBLE ON INSIDE HINGED COVER WITH LABEL DESCRIBING FUNCTION.
- UTILITY COMPANY ELECTRIC METER, MOUNT SOCKET INSIDE ENCLOSURE WITH METER VISIBLE ON OUTSIDE. COORDINATE REQUIREMENTS WITH UTILITY COMPANY. METER MOUNTING HEIGHT SHALL BE BETWEEN 48" AND 60" ABOVE FINISH GRADE TO CENTER OF METER.
- PANEL, 120/240VOLT 1 PHASE 3 WIRE, CIRCUIT BREAKER LOAD CENTER TYPE. REFER TO PANELBOARD SCHEDULE FOR CIRCUIT BREAKERS. BREAKERS SHALL BE ACCESSIBLE ON INSIDE HINGED COVER. PROVIDE DIRECTORY OR LABELS.
- CONTRACTOR SHALL FURNISH AND INSTALL ONE (1) 3"-, 36" DEEP, ALABAMA POWER COMPANY WILL FURNISH AND INSTALL CONDUCTORS. COORDINATE CONNECTION REQUIREMENTS.
- ALL ENCLOSURE COMPONENTS AND INTERNAL WIRING BETWEEN COMPONENTS SHALL BE DONE BY ENCLOSURE MANUFACTURER.
- THIS IS A STANDARD ELECTRICAL ENCLOSURE FOR CITY OF AUBURN AND MAY INCLUDE EQUIPMENT NOT USED ON THIS PROJECT.
- SERVICE TERMINATION LUGS.

GENERAL NOTES

- ALL ELECTRICAL WORK AND MATERIAL SHALL CONFORM TO THE LATEST EDITION OF THE N.E.C. AND THE REQUIREMENTS OF THE STATE AND LOCAL AUTHORITY HAVING JURISDICTION.
- WIRING SYSTEM SHALL CONSIST OF COPPER WIRING INSTALLED IN CONDUIT, MINIMUM WIRE SIZE SHALL BE #12 AWG. MINIMUM CONDUIT SIZE SHALL BE 3/4".
- ALL CONDUCTORS SHALL BE TYPE THHN.
- CONDUIT SHALL BE SIZED IN ACCORDANCE WITH TABLE 1, CHAPTER 9 OF N.E.C.
- CONTRACTOR SHALL PROVIDE ALL MATERIAL NECESSARY TO FINALIZE A NEAT, COMPLETE AND PROPERLY WORKING ELECTRICAL SYSTEM WHICH CONFORMS TO ALL LOCAL CODES AND THE NATIONAL ELECTRICAL CODE AS PER PLANS, AND SPECS.
- IT SHALL BE THE RESPONSIBILITY OF THE CONTRACTOR TO VISIT THE SITE AND BECOME THOROUGHLY FAMILIAR WITH ALL EXISTING CONDITIONS PRIOR TO BID DATE OR CONSTRUCTION DATE, AS HE SHALL BE RESPONSIBLE FOR SAME.
- EXACT LOCATION OF EXISTING UNDERGROUND UTILITIES IS THE RESPONSIBILITY OF THE CONTRACTOR.
- CUTTING OF EXISTING PAVEMENT IS NOT ALLOWED FOR ROUTING OF NEW CIRCUITS/CONDUITS. PROVIDE DIRECTIONAL HORIZONTAL BORING MINIMUM 36" BELOW GRADE AS REQUIRED.
- FLAG HOLDER SHALL BE INSTALLED 8'-0" ABOVE GRADE IF REQUIRED.
- REQUIRED CHAMFER SHALL BE CONSTRUCTED USING CHAMFER STRIP. IT MAY NOT BE HAND TOOLED.
- CONTRACTOR SHALL COORDINATE EXACT LOCATION OF PEDESTRIAN LIGHTS WITH OWNER REPRESENTATIVE PRIOR TO INSTALLATION.
- CONTRACTOR SHALL SCHEDULE ALL INSPECTIONS WITH OWNER REPRESENTATIVES AS REQUIRED IN THE CITY OF AUBURN ENGINEERING DESIGN AND CONSTRUCTION MANUAL.
- SERVICE VOLTAGE AT EACH ELECTRICAL ENCLOSURE SHALL BE 120 / 240 VOLT, 1 PHASE, 3 WIRE. SERVICE SHALL BE UNDERGROUND BY ALABAMA POWER.
- ENCLOSURE LOCATIONS ARE GENERAL. COORDINATE EXACT LOCATIONS WITH OWNER REPRESENTATIVE AND ALABAMA POWER COMPANY PRIOR TO INSTALLATION.
- EACH ENCLOSURE SHALL HAVE (1) SPARE 2-INCH CONDUIT STUBBED OUT 5' AND CAPPED. COORDINATE EXACT LOCATION WITH THE CITY OF AUBURN.

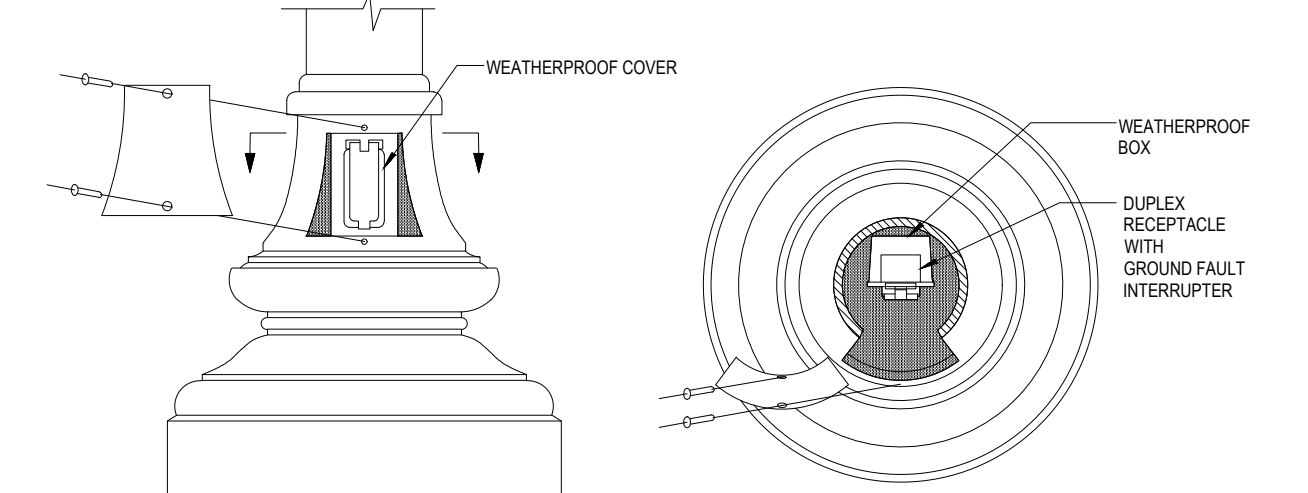
ELECTRICAL NOTES

WEATHERPROOF RECEPTACLE - EXTERNAL POST SHAFT LOCATION



SPECIFICATIONS
A 20 AMP, 125 VOLT, GROUND FAULT CIRCUIT INTERRUPTER DUPLEX RECEPTACLE SHALL BE MOUNTED IN THE POST. THE RECEPTACLE SHALL BE UL LISTED ACCORDING TO E-48380 AND UL 943 CLASS A AND UL 498. THE RECEPTACLE SHALL HAVE A CAST ALUMINUM LOCKABLE, UL LISTED COVER THAT IS SUITABLE FOR WET LOCATIONS WHILE IN USE AND COMPLIES WITH NEC ARTICLE 410-57(B). THE COVER SHALL ACCEPT MOST COMMON CORD SETS UP TO 3/8" DIAMETER (14/3). THE RECEPTACLE AND COVER SHALL MOUNT TO AN OUTLET OPENING, IN THE POST SHAFT, WITH A GASKET AND STAINLESS STEEL SCREWS. HOLOPHANE FOCUS-SEMI. LOCATE THIS RECEPTACLE 11" ABOVE BOTTOM OF POLE. THIS RECEPTACLE SHALL BE MOUNTED 11"-0" ABOVE BOTTOM OF POLE BASE.

WEATHERPROOF RECEPTACLE - INTERNAL BASE LOCATION

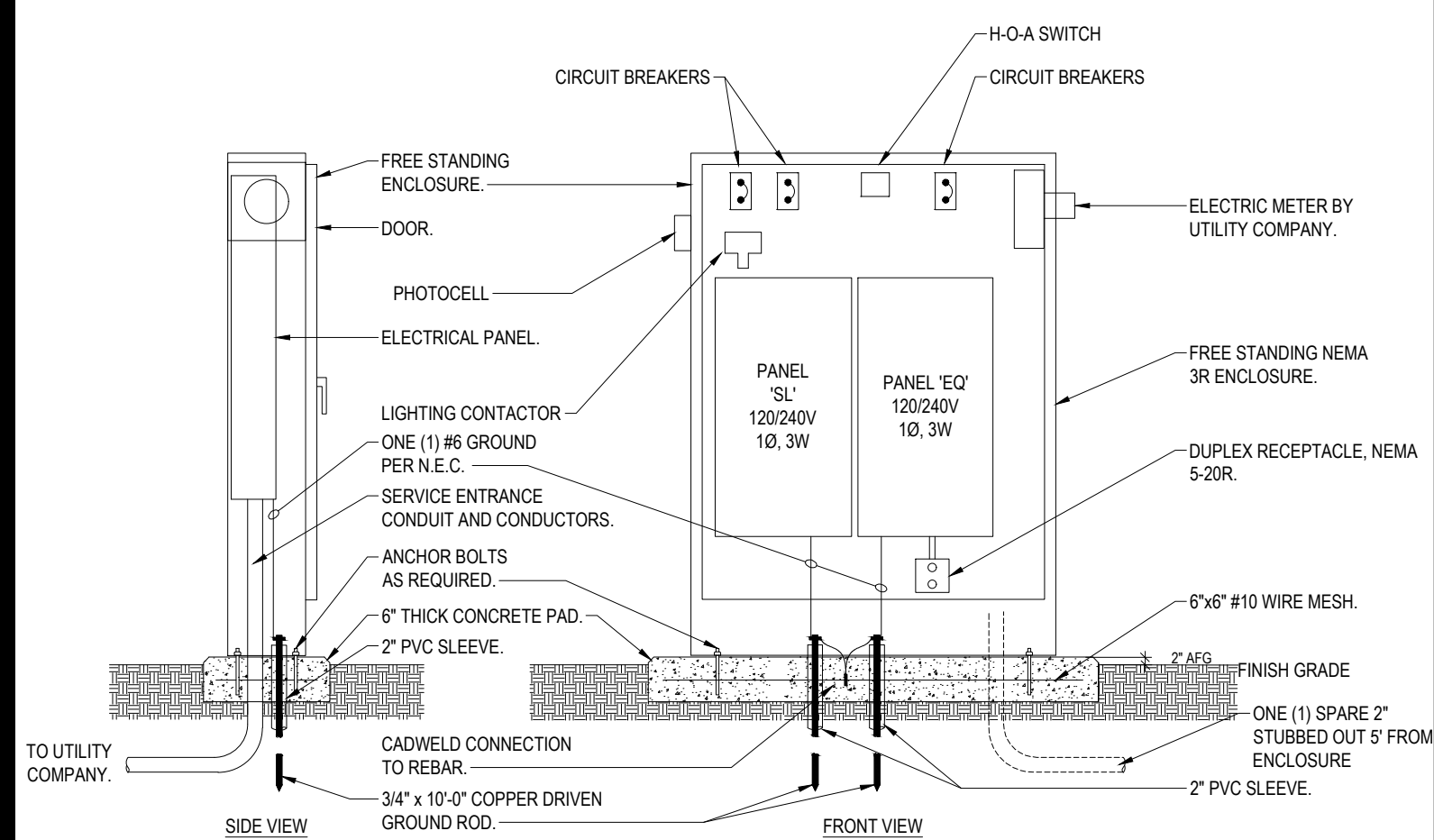


SPECIFICATIONS
A 20 AMP, 125 VOLT, GROUND FAULT CIRCUIT INTERRUPTER DUPLEX RECEPTACLE SHALL BE MOUNTED INSIDE THE POST BASE, FACING TOWARD THE ACCESS DOOR. THE RECEPTACLE SHALL BE UL LISTED ACCORDING TO E-48380 AND UL 943 CLASS A AND UL 498. THE RECEPTACLE SHALL BE MOUNTED IN A CAST ALUMINUM BOX AND COVER THAT IS SUITABLE FOR WET LOCATIONS WHILE NOT IN USE. THE RECEPTACLE AND COVER SHALL MOUNT TO A OUTLET BOX WITH A GASKET AND STAINLESS STEEL SCREWS. HOLOPHANE FB/GFWPC.

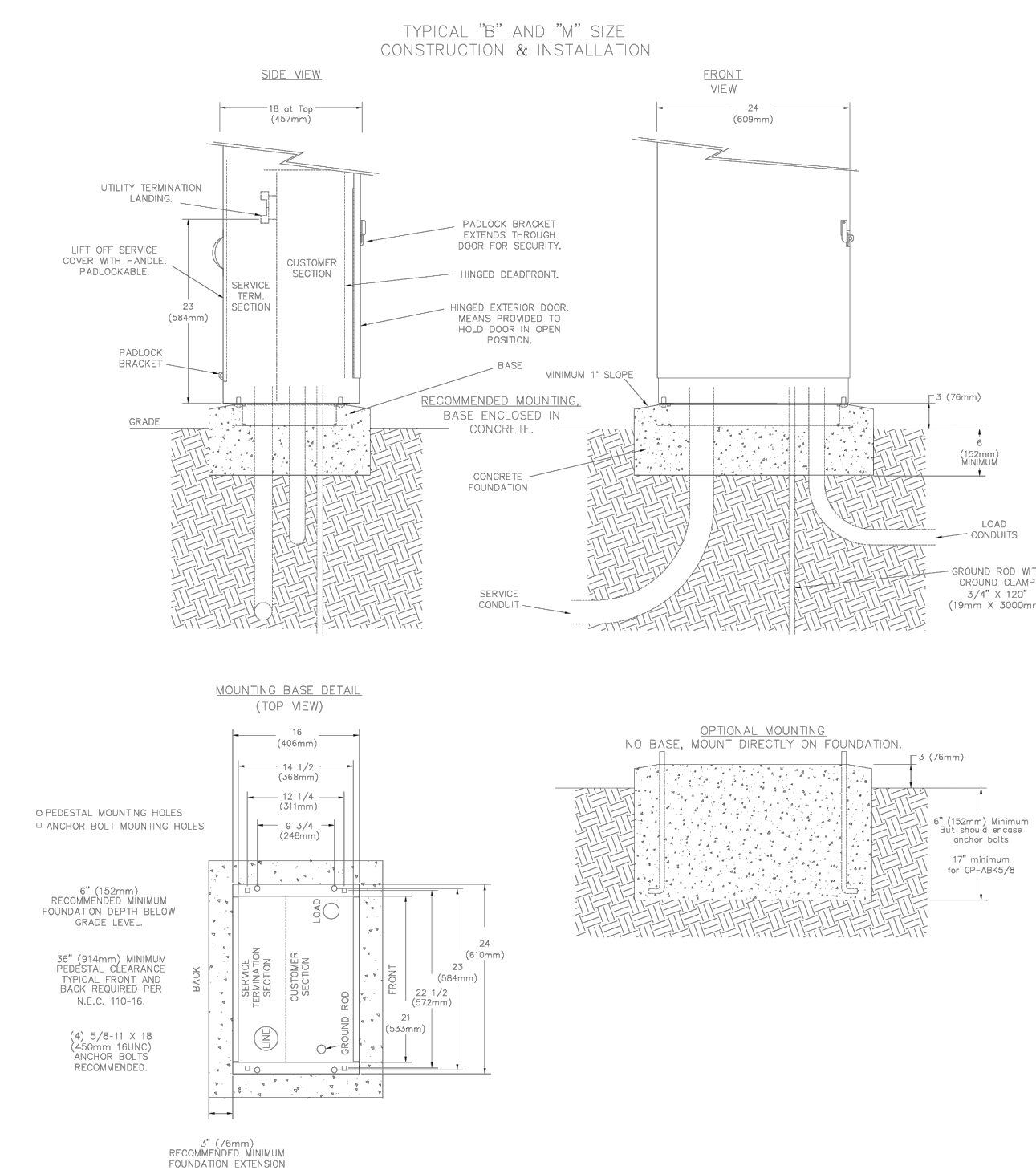
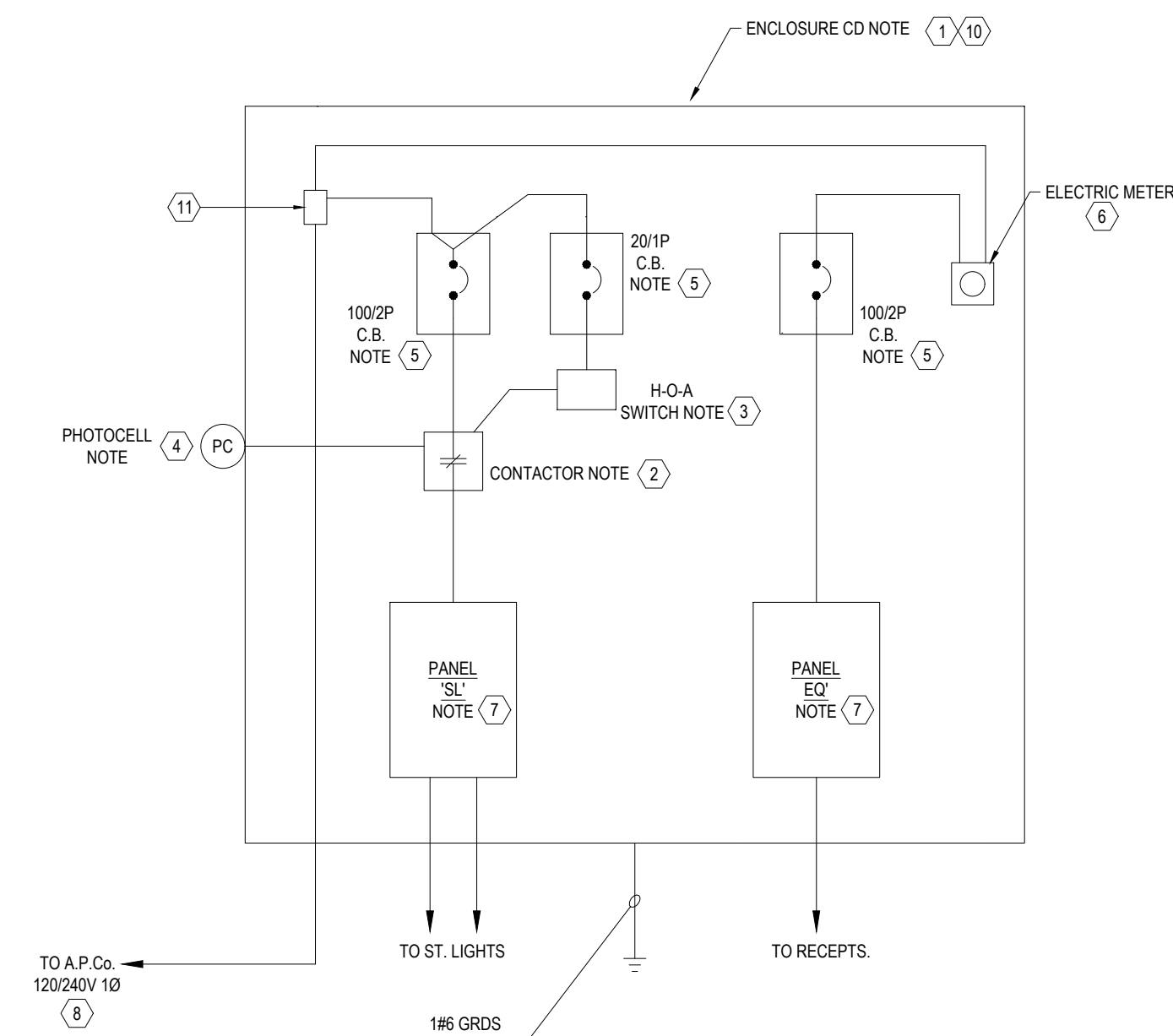
NOTES:

- RECEPTACLES MUST BE WIRED ON SEPARATE CIRCUIT FROM LIGHT.
- RECEPTACLES ARE TYPICALLY INSTALLED FOR USE BY AUTHORIZED PERSONNEL FOR SPECIAL EVENTS, DECORATIVE SEASONAL LIGHTING, AND OWNER MAINTENANCE PURPOSES.

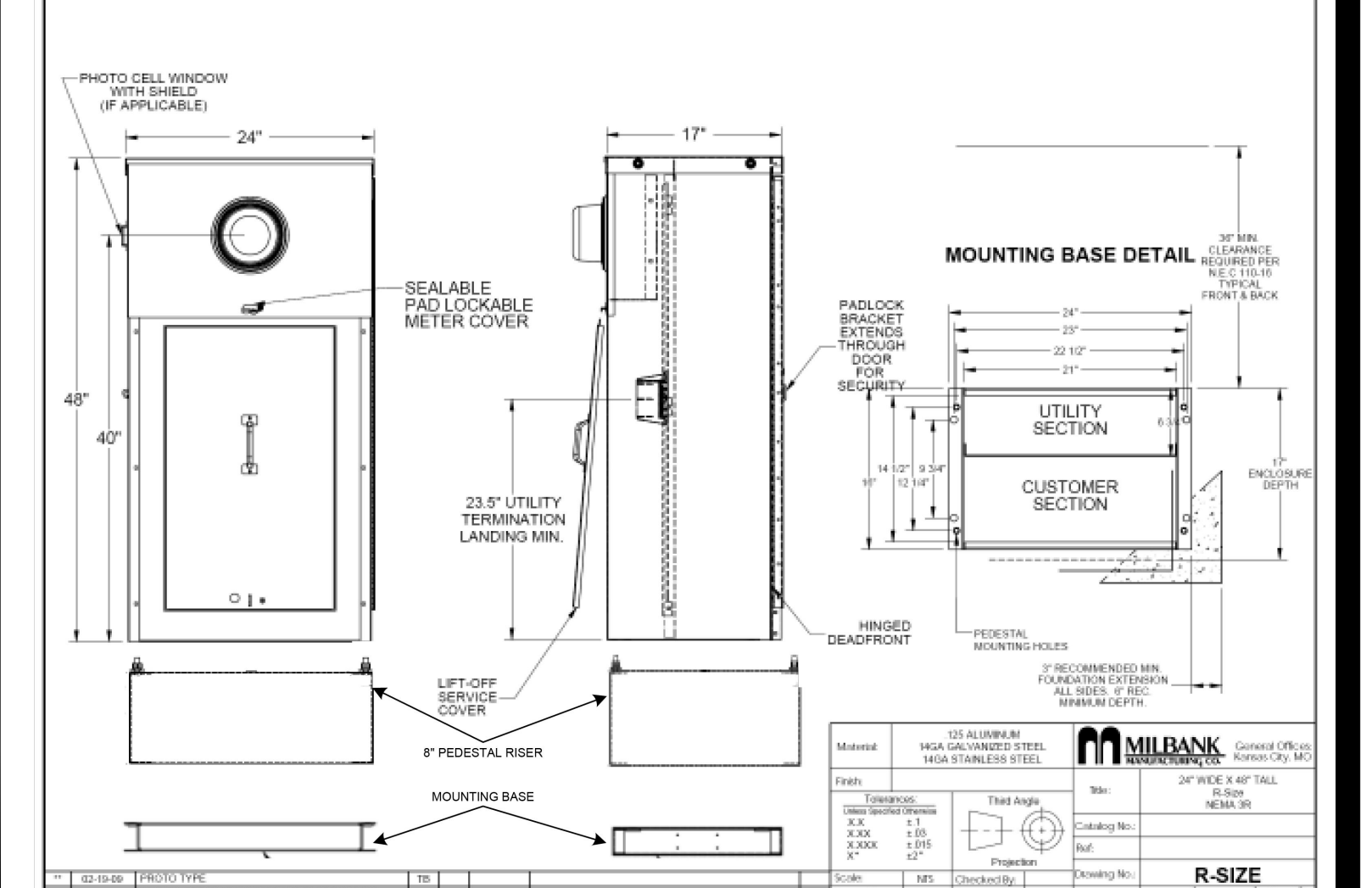
PANEL ENCLOSURE DETAIL - TYPICAL



EQUIPMENT INSIDE ENCLOSURE - TYPICAL



24" COMMERCIAL PEDESTAL



STANDARD DETAILS: TRAFFIC - SHEET 2 of 3



DEPARTMENT:	ENGINEERING SERVICES	REVISIONS:
SCALE:	N.T.S.	
DRAWN BY:	GINA MCCORKARD	
CITY ENGINEER:	ALISON FRAZIER	
APPROVED BY:	ALISON FRAZIER	
IMPLEMENTED:	01-01-2022	

2.15

EFFECTIVE DATE:

2024

