



Break out your thinking cap and magnifying glass for Itty Bitty Auburn 2025!

This paper contains 22 clues and itty bitty pictures for 22 not-so itty bitty places in Auburn.

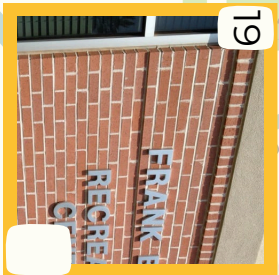
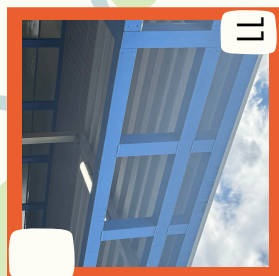
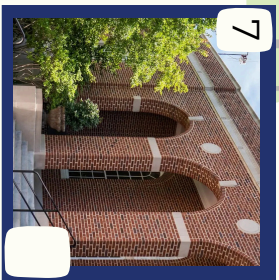
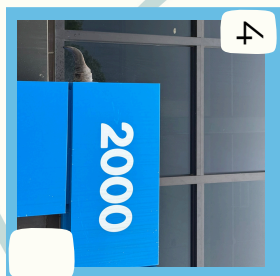
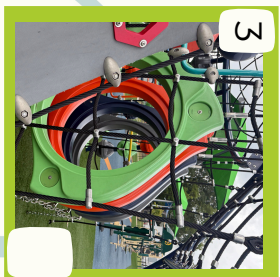
Each clue/picture will lead you around Auburn where you will collect a letter or symbol. Record the letters you find and once all have been found, unscramble the letters to discover the secret phrase! During registration you will be asked to type the phrase you unscrambled.

All participants must register at www.auburnalabama.org/parks/register by August 31st to be entered into the prize drawing. *Only those who have the secret phrase will be able to register.*

Winners will be announced and contacted on **Friday, September 5th.**

WELCOME TO THE SCAVENGER HUNT

1 This facility is home to our 50+ Programs.	12 This park hosts our largest event, City Fest, every year.
2 This park contains grind rails and is owned both by the City of Auburn and Opelika.	13 This park is where City Market is hosted every Saturday of the summer.
3 This playground shares its name with a park and cemetery.	14 This park is nestled between West Chewacla Drive and Chewalca Drive.
4 This facility is our newest recreation facility.	15 This park is has been here since 1949 and is our oldest park.
5 This facility's mission is to protect the life and property of all citizens against criminal activity.	16 This facility is built completely out of shipping crates.
6 This facility is home to Sparky.	17 This facility is home to our annual polar plunge.
7 This facility was once an Auburn post office.	18 This facility is home to all our art programs.
8 This facility added a new indoor multipurpose court and outdoor fields in 2023.	19 This facility includes an esports room.
9 This facility is responsible for helping keep Auburn a clean and beautiful city.	20 This facility was home to an Auburn University Sports program in 1997 and 1998.
10 This facility holds many stories and knowledge.	21 This park is named after a family who donated the land and is a passive park.
11 This facility was once a National Guard Armory in the late 1960s and 70s.	22 This park is right beside one of our cemeteries and has the same name as a fish.



ITY BITTY
Cuburn
SCAVENGER HUNT

Unscramble your letters to discover the secret phrase

[illegible]

register at www.auburnalabama.org/parks/register

