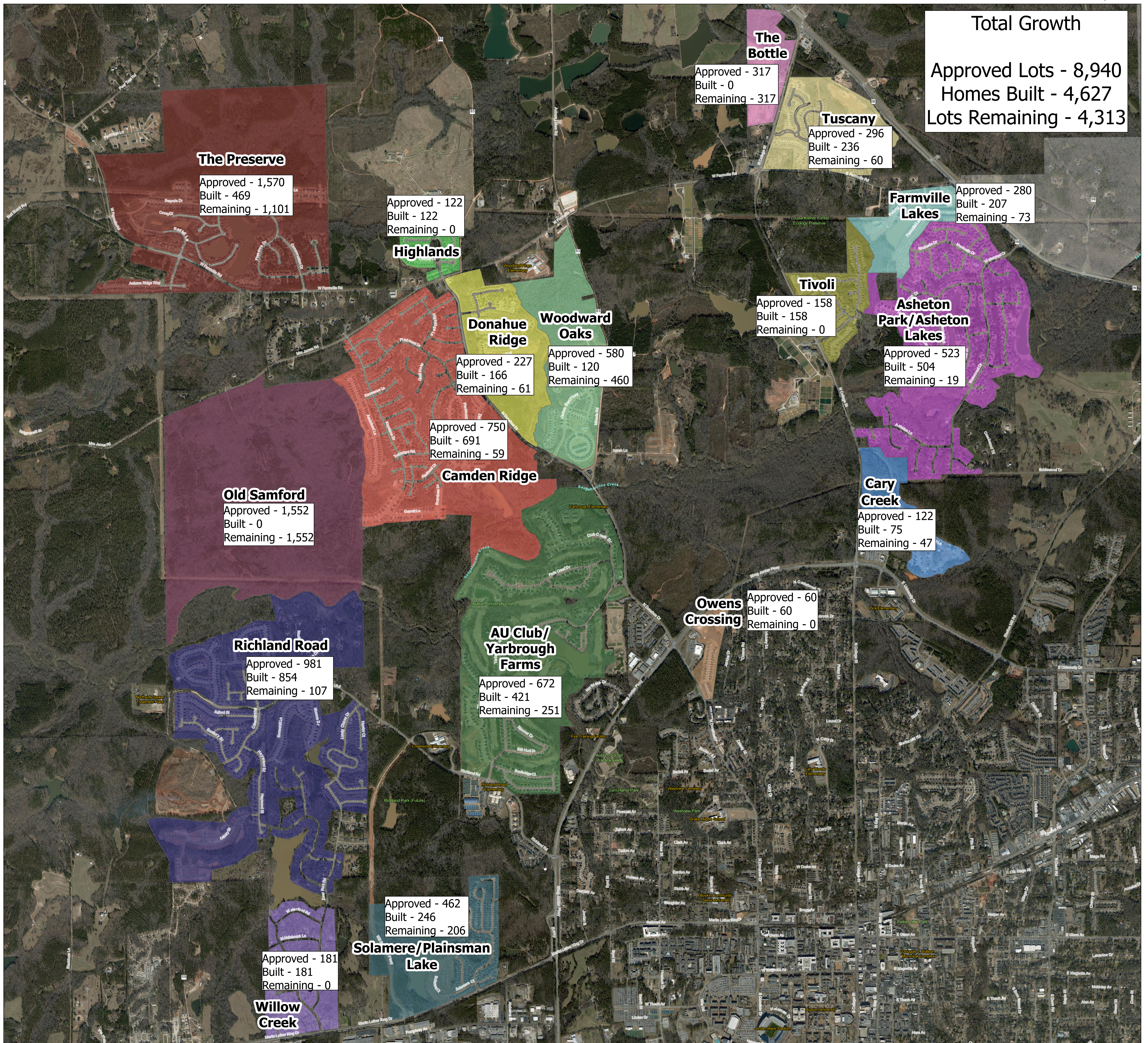
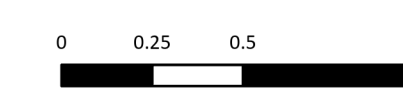


North Auburn Residential Growth



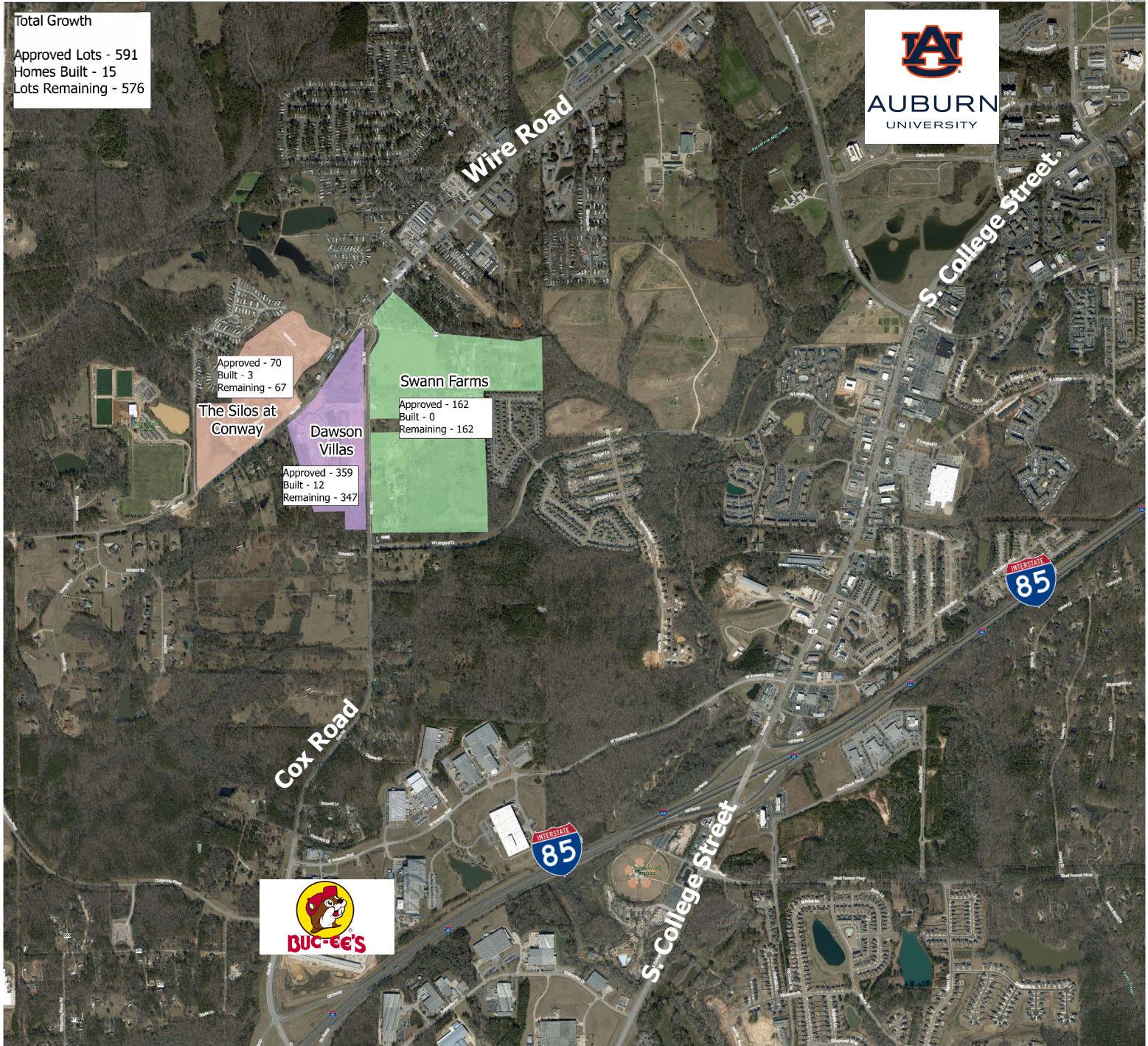
- North Auburn Subdivisions**
- | | | | | |
|------------------|----------------------------|-----------------|-------------------------|---------------|
| Subdivision Name | Asheton Park/Asheton Lakes | Farmville Lakes | Richland Road | Tivoli |
| | Camden Ridge | Highlands | Solamere/Plainsman Lake | Tuscany Hills |
| | Cary Creek | Old Samford | The Bottle | Willow Creek |
| | AU Club/Yarborough Farms | Donahue Ridge | Owens Crossing | Woodward Oaks |
| | | | The Preserve | |



The City of Auburn, Alabama does not guarantee or warrant the accuracy of this map or any information contained herein. Information may contain errors and should be verified by an appropriately qualified, licensed and independent professional.

Southwest Auburn Residential Growth

Total Growth
 Approved Lots - 591
 Homes Built - 15
 Lots Remaining - 576



The Silos at Conway
 Approved - 70
 Built - 3
 Remaining - 67

Dawson Villas
 Approved - 359
 Built - 12
 Remaining - 347

Swann Farms
 Approved - 162
 Built - 0
 Remaining - 162

Cox Wire Subdivisions
 Subdivision Name
 Swann Farms
 The Silos at Conway
 Dawson Villas

As of October 1, 2023



The City of Auburn, Auburn, Buies Run, and the University of Auburn are not responsible for the accuracy of the information provided on this map. The user should verify the information on the ground. The City of Auburn, Auburn, Buies Run, and the University of Auburn are not responsible for the accuracy of the information provided on this map.