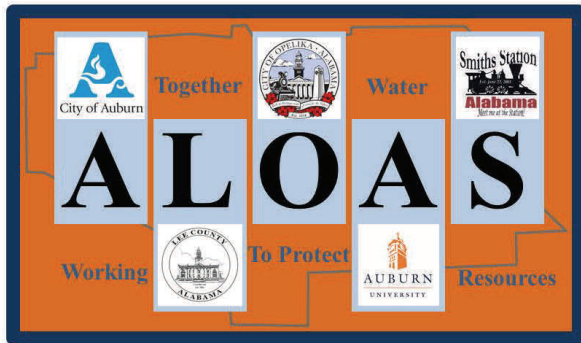


The Parkerson Mill Creek Watershed



A Joint Publication of:



The City of Auburn

Lee County

The City of Opelika

Auburn University

The City of Smiths Station

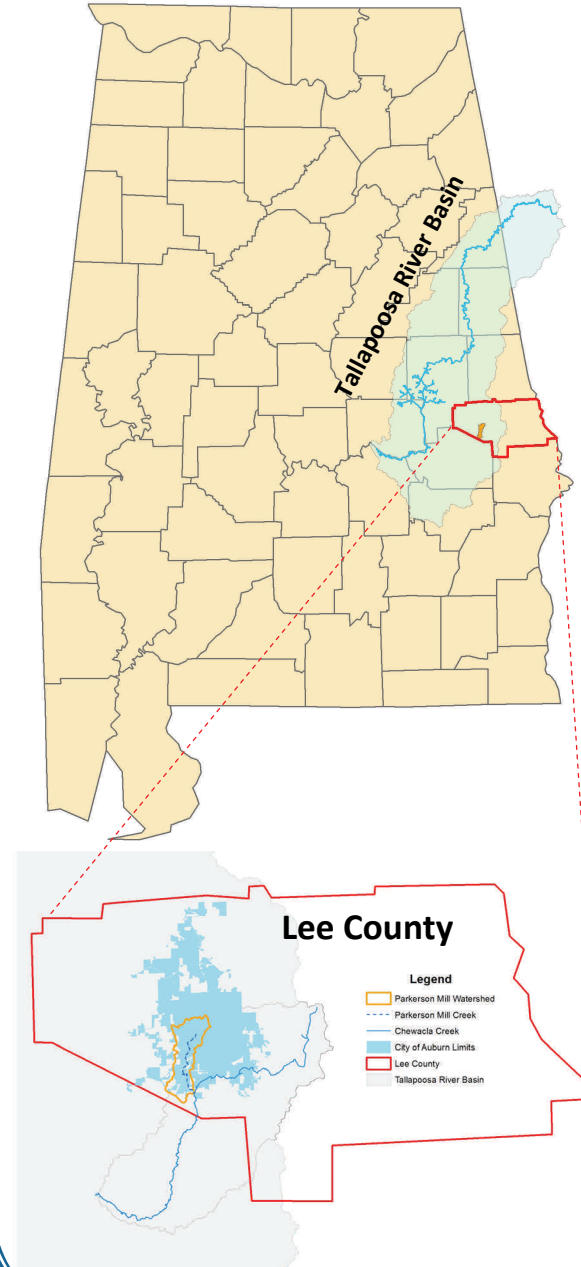
ALOAS is a voluntary partnership formed between the City of Auburn, Lee County, the City of Opelika, Auburn University, and the City of Smiths Station to facilitate the sharing of information between its respective watershed and stormwater management programs and the citizens they serve.

This brochure is one of a series of publications regarding storm water issues in Lee County.

The series is produced by the ALOAS Storm Water Advisory Panel and is intended to protect, maintain, and restore the chemical, physical, and biological integrity of local waters in order to enhance the quality of life for our citizens.

***“Local Citizen
Groups and
Governments
Working Together
for Clean Water”***

Watershed Location



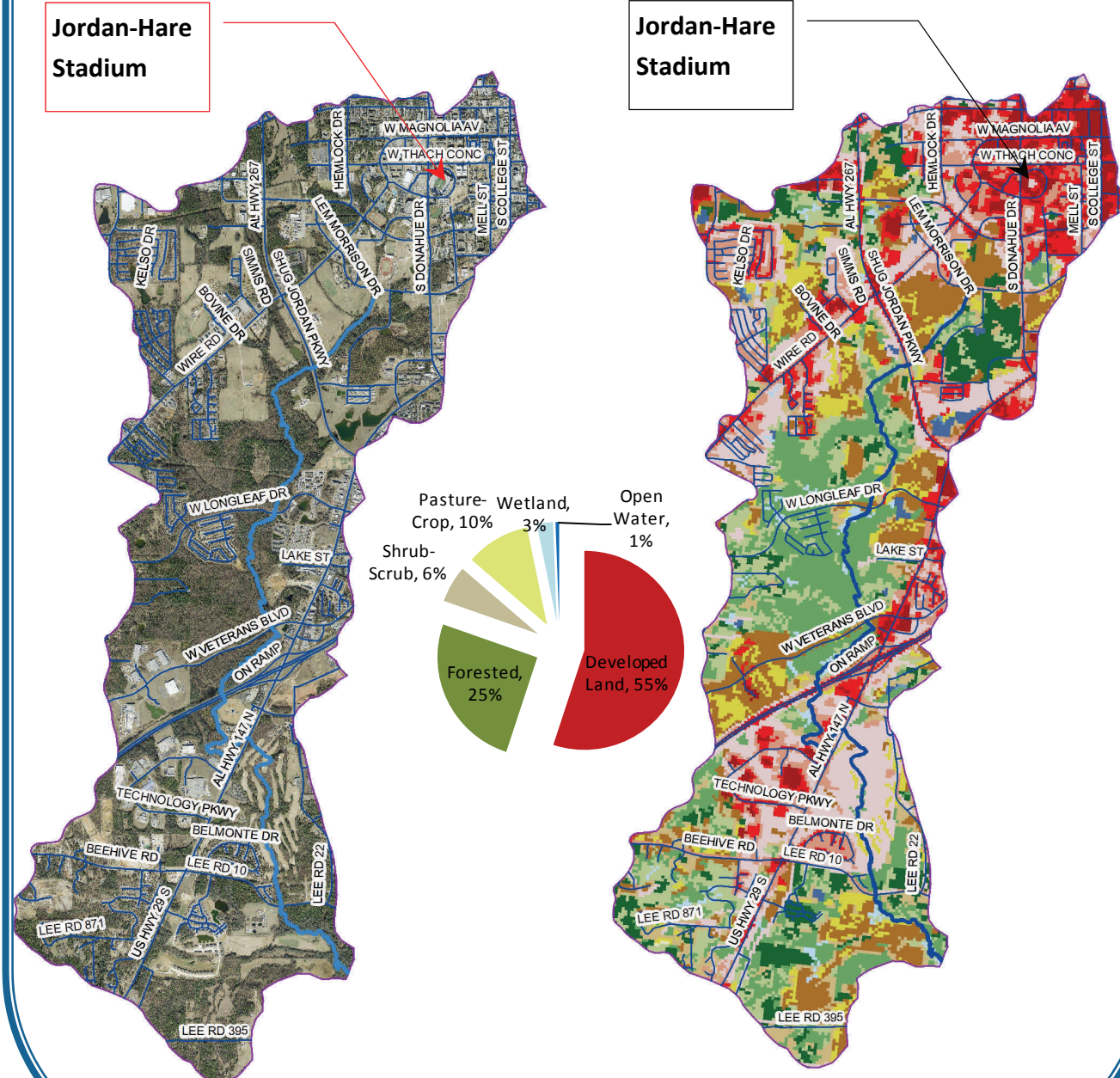
Watershed At a Glance

Parkerson Mill Creek is an impaired stream that is a tributary to Chewacla Creek. The majority of the headwaters of Parkerson Mill Creek are piped, much of which is under Auburn University’s main campus. The stream flows mostly southward until its confluence with Chewacla Creek near Sandhill Road. From there, Chewacla eventually becomes Uphapee Creek, which ultimately drains to the Tallapoosa River. The Parkerson Mill Creek Watershed drains an area of approximately 9.3 square miles. The entire length of Parkerson Mill Creek (6.85 miles) was listed on the 2010 303(d) list as impaired. It is considered impaired because it is not meeting pathogen (E-coli) criteria to support its designated use of fish and wildlife. Possible sources of these pathogens (E-coli) are believed to be urban runoff and storm sewer cross connections. As required by law, the Alabama Department of Environmental Management issued a Total Maximum Daily Load (TMDL), thus establishing a limit, or load allocation, on the amount of E-coli that can be discharged to Parkerson Mill Creek and still meet State water quality standards. This TMDL was issued in 2011.

What's Being Done to Help?

The Parkerson Mill Creek Watershed Management Plan is a comprehensive approach designed to address pollution concerns of Parkerson Mill Creek. The development of this plan was funded in part by the Alabama Department of Environmental Management through the Clean Water Act Section 319(h) funds, which are granted to state and tribal agencies to develop and implement watershed plans to reduce nonpoint source pollution. Waters listed on the Section 303 (d) are prioritized for development of watershed management plans that focus on creating an action plan to restore and protect degraded streams. This plan aims to suggest best management practices (BMPs) that can be adopted by watershed community members to improve the overall health of the stream. Additionally, the City of Auburn and Auburn University, through their respective Phase II Municipal Separate Storm Sewer (MS4) programs, are actively monitoring Parkerson Mill Creek and are evaluating and prioritizing projects within its watershed that will improve water quality.

Aerial Photography and Land Cover Mapping



How Do I Help and Get Involved?

City of Auburn - Water Resource Management Department

334-501-3060

www.auburnalabama.org/wrm

Lee County - County Engineer

334-737-7011

www.leeco.us

City of Opelika - Department of Public Works

334-705-5400

www.opelika.org

Auburn University - Risk Management and Safety

334-844-4805

www.auburn.edu/administration/rms/

City of Smiths Station

334-297-8771

www.smithsstation.us